

**SPOTSYLVANIA COUNTY VIRGINIA  
2007 GEODETIC CONTROL SURVEY**

JN 107-065

HORIZONTAL DATUM: NAD 83(2007)  
 VERTICAL DATUM: NAVD 88  
 COORDINATE SYSTEM: VIRGINIA STATE PLANE, NORTH ZONE  
 UNITS: U.S. SURVEY FOOT

HORIZONTAL ORDER: FIRST  
 VERTICAL ORDER: THIRD

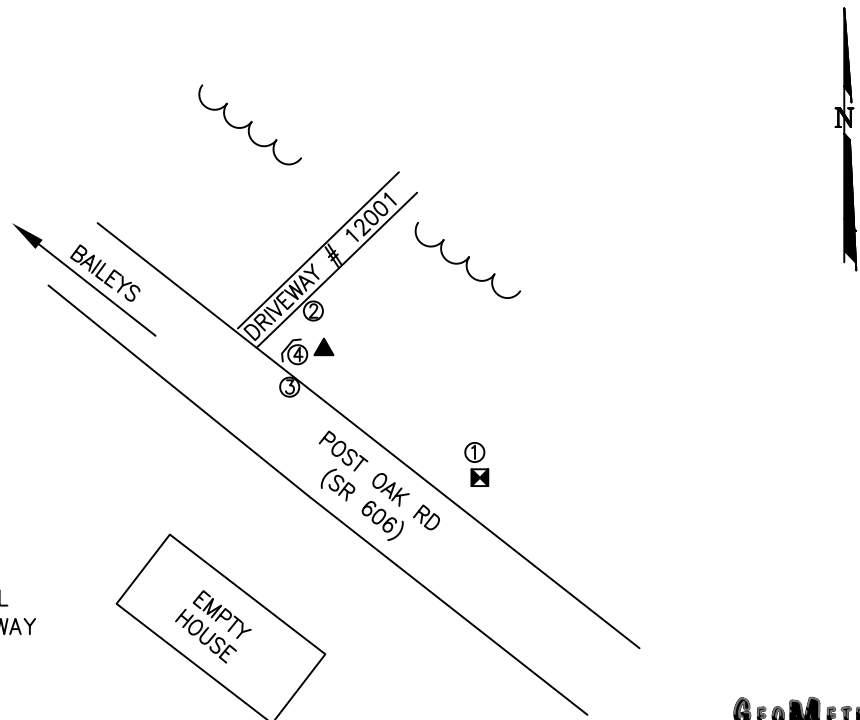
COUNTY	NAME OF STATION	YEAR
SPOTSYLVANIA	PERRY	2007
N: 6745378.51	LAT: 38° 10' 07.40684" N	COMBINED FACTOR: 0.99996605
E: 11698442.98	LONG: 77° 45' 01.16931" W	⊖ ANGLE: 0° 28' 04"
ELEVATION: 374.68' (ESTABLISHED BY GPS)		
DISTANCES AND DIRECTIONS TO AZIMUTH MARKS		
STATION	GROUND DISTANCE	TRUE AZIMUTH
BAILEYS	816.06	295° 39' 01"

THE STATION IS LOCATED ABOUT 14.5 KM (9.0 MILES) WEST OF SPOTSYLVANIA, AND 15.9 KM (9.9 MILES) SOUTH OF LOCUST GROVE.

TO REACH THE STATION FROM THE INTERSECTION OF SR 208 (COURTHOUSE ROAD) AND SR 613 (BROCK ROAD), AT THE SPOTSYLVANIA COURTHOUSE, GO NORTH ON SR 613 FOR 0.8 KM (0.5 MILE) TO ITS INTERSECTION WITH SR 608 (ROBERT E LEE DRIVE). TURN LEFT AND GO WEST ON SR 608 FOR 8.0 KM (5.0 MILES) TO ITS INTERSECTION WITH OLDE MEADOW WAY. CONTINUE WEST SR 608 FOR 3.2 KM (2.0 MILES) TO ITS INTERSECTION WITH SR 608 (WEST CATHARPIN ROAD). CONTINUE WEST ON SR 608 FOR 0.5 KM (0.3 MILE) TO ITS INTERSECTION WITH SR 612 (PAMUNKEY ROAD). TURN LEFT AND GO SOUTH ON SR 612 FOR 6.6 KM (4.1 MILES) TO ITS INTERSECTION WITH SR 606 (POST OAK ROAD). TURN LEFT AND GO SOUTHEAST ON SR 606 FOR 3.2 KM (2.0 MILES) THE STATION ON THE LEFT IN FRONT OF HOUSE NUMBER 12001.

THE STATION IS A STANDARD SPOTSYLVANIA COUNTY, VA ALUMINUM SURVEY DISK SET INTO A Poured IN PLACE CONCRETE MONUMENT 10 INCHES IN DIAMETER, FLUSH WITH GROUND SURFACE AND STAMPED PERRY 2007.

SKETCH:



1. 53.0' NE OF A TELEPHONE PEDESTAL
2. 12.0' SE OF THE EDGE OF A DRIVEWAY
3. 11.1' NE OF THE EP OF SR 606
4. 9.5' E OF A CULVERT

**GEOMETRICS**  
GPS, INC.

DRAWN BY: KLS

CHECKED BY: DAR

DATE: 06/2008

APPROX. SCALE: 1" = 50'