

SPOTSYLVANIA COUNTY, VIRGINIA  
E911 GPS SURVEY REVISED 10/2008

W.O. 95007

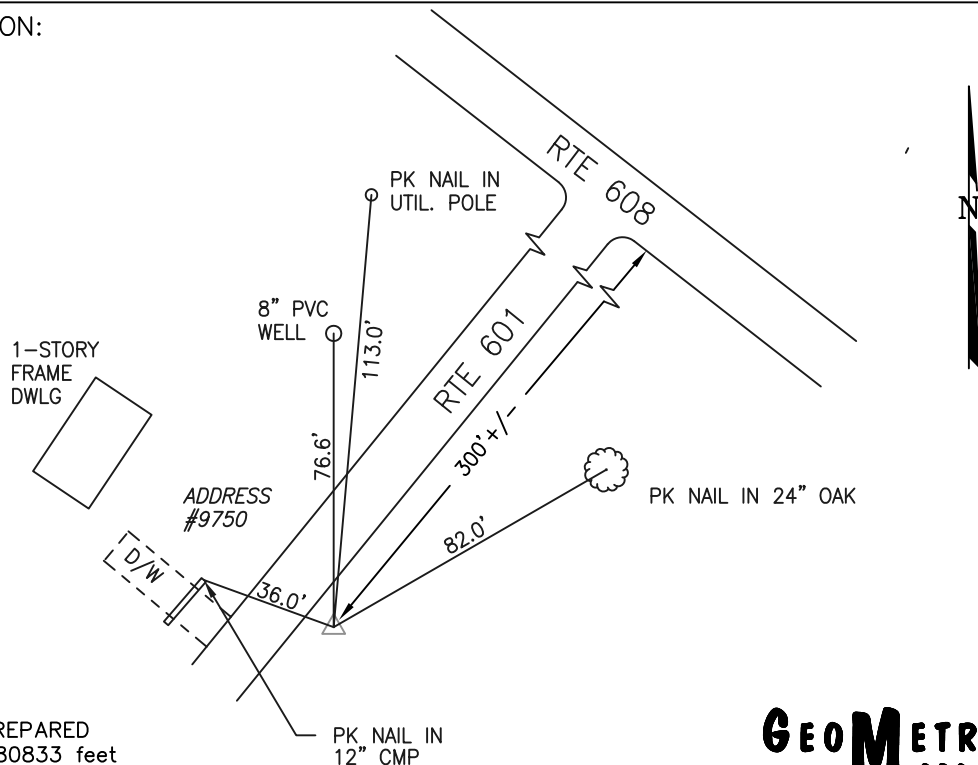
MAP PROJECTION: LAMBERT ORDER OF SURVEY: FIRST  
NAD 83(2007) \* VIRGINIA STATE PLANE COORDINATE SYSTEM \* NORTH ZONE

COUNTY		NAME OF STATION		YEAR
SPOTSYLVANIA		PAYTES		1995
N: 6766342.93	E: 11674442.00	LAT.: 38°13'36.47792"N	LONG.: 77°49'59.79300"W	
GRID FACTOR: 0.99997149	SEA LEVEL FACTOR: 0.99997984	ϕ ANGLE: +0°24'58.01"		
ESTABLISHED BY: GeoMetrics GPS, INC.	YEAR 1995	DISTANCES AND DIRECTIONS TO REFERENCE MARKS AND PROMINENT OBJECTS OBSERVED AT STATION		
		OBJECT	DISTANCE-FT.	MAG. AZIMUTH
VERTICAL DATUM NAVD 88				
ELEVATION (FT.) 526.76				
RECOVERED: OCT 2000				

DESCRIPTION OF STATION:

The station is a Spotsylvania County survey disk set in concrete stamped PAYTES 1995 located in Spotsylvania County, Virginia, approximately 13.5 miles west of Spotsylvania Court House. To reach the station from the intersection of Route 601 (Lawyers Road) and Route 608 (West Catharpin Road) at Paytes proceed southwest along Route 601 (Lawyers Road) approximately 300 feet to the station on the left. Witness post set N55°E at 1.2 feet.

SKETCH OF STATION:



THIS SURVEY DATA PREPARED  
USING 1 meter = 3.280833 feet

**GEOMETRICS**  
GPS, INC.

236 CAMBRIDGE ROAD  
FREDERICKSBURG, VIRGINIA  
(540) 372-3499

PREPARED BY: EJP	DATE: AUG '95
CHECKED BY: DAR	DATE: AUG '95

NOTE:  
IN 2008 THE COORDINATES WERE CONVERTED TO  
NAD83(2007) BY APPLYING A COMPUTED SHIFT