

SPOTSYLVANIA COUNTY, VIRGINIA
E911 GPS SURVEY REVISED 10/2008

W.O. 95007

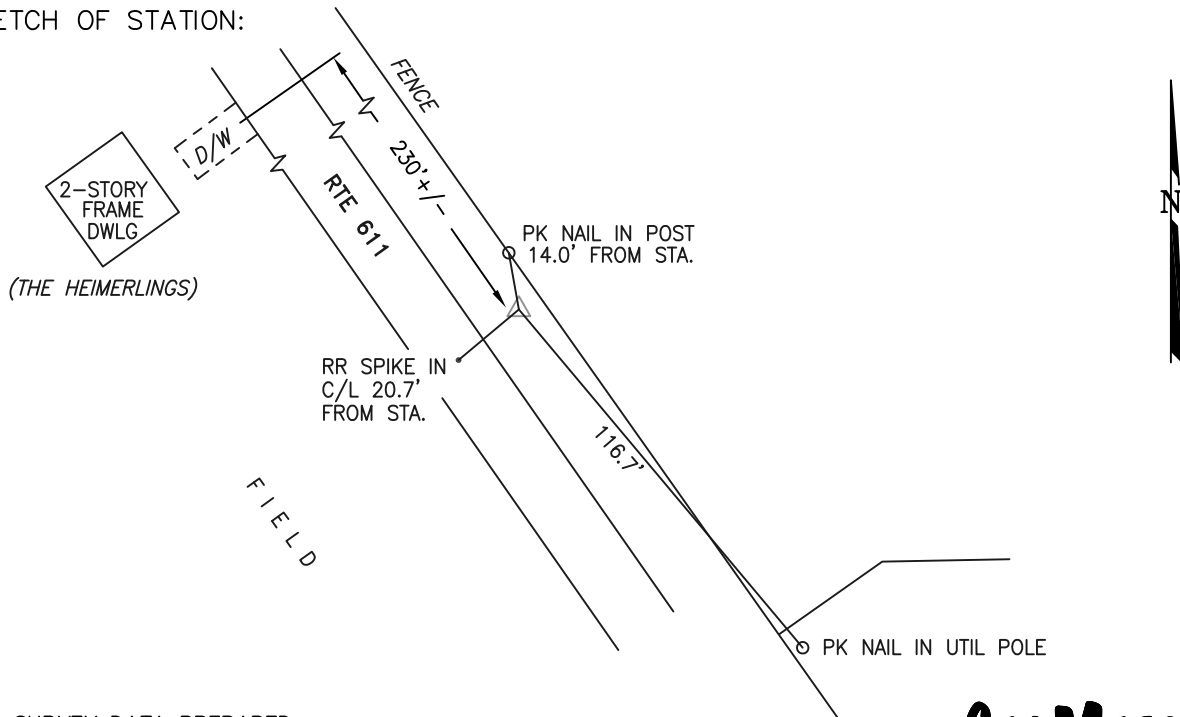
MAP PROJECTION: LAMBERT ORDER OF SURVEY: FIRST
NAD 83(2007) * VIRGINIA STATE PLANE COORDINATE SYSTEM * NORTH ZONE

| | | | |
|---|------------------------------|--|---------------------------|
| COUNTY | NAME OF STATION | | YEAR |
| ORANGE | PARKER | | 1995 |
| N: 6789324.68 | E: 11689545.71 | LAT.: 38°17'22.53274"N | LONG.: 77°46'48.26120"W |
| GRID FACTOR: 0.99996467 | SEA LEVEL FACTOR: 0.99998315 | ϕ ANGLE: +0°26'57.55" | |
| ESTABLISHED BY: GeoMetrics GPS, INC. | YEAR 1995 | DISTANCES AND DIRECTIONS TO REFERENCE MARKS AND PROMINENT OBJECTS OBSERVED AT STATION | |
| | | OBJECT | DISTANCE-FT. MAG. AZIMUTH |
| VERTICAL DATUM NAVD 88 | | | |
| ELEVATION (FT.) 457.62 | | | |
| RECOVERED: OCT 2000 | | | |

DESCRIPTION OF STATION:

The station is a Spotsylvania County survey disk set in concrete stamped PARKER 1995 located in Orange County, Virginia, approximately 1.5 miles west of Parker. To the reach the station from the intersection of Route 3 (Plank Road) and Route 621 (Orange Plank Road) proceed west along Route 621 (Orange Plank Road) 5.2 miles to its intersection with Route 611. Turn right and proceed northwest along Route 611 (Windy Acres Lane) 1.7 miles to the station on the right. Witness post set N50°E at 2.3 feet.

SKETCH OF STATION:



THIS SURVEY DATA PREPARED
USING 1 meter = 3.280833 feet

GEOMETRICS
GPS, INC.

236 CAMBRIDGE ROAD
FREDERICKSBURG, VIRGINIA
(540) 372-3499

| | |
|------------------|---------------|
| PREPARED BY: EJP | DATE: AUG '95 |
| CHECKED BY: DAR | DATE: AUG '95 |

NOTE:
IN 2008 THE COORDINATES WERE CONVERTED TO
NAD83(2007) BY APPLYING A COMPUTED SHIFT