

**SPOTSYLVANIA COUNTY VIRGINIA
2007 GEODETIC CONTROL SURVEY**

JN 107-065

HORIZONTAL DATUM: NAD 83(2007)
 VERTICAL DATUM: NAVD 88
 COORDINATE SYSTEM: VIRGINIA STATE PLANE, NORTH ZONE
 UNITS: U.S. SURVEY FOOT

HORIZONTAL ORDER: FIRST
 VERTICAL ORDER: THIRD

COUNTY	NAME OF STATION	YEAR
SPOTSYLVANIA	PAMUNKEY	2007
N: 6756360.93	LAT: 38° 11' 55.87747" N	COMBINED FACTOR: 0.99996106
E: 11699606.30	LONG: 77° 44' 45.47319" W	⊖ ANGLE: 0° 28' 14"
ELEVATION: 396.32' (ESTABLISHED BY GPS)		
DISTANCES AND DIRECTIONS TO AZIMUTH MARKS		
STATION	GROUND DISTANCE	TRUE AZIMUTH

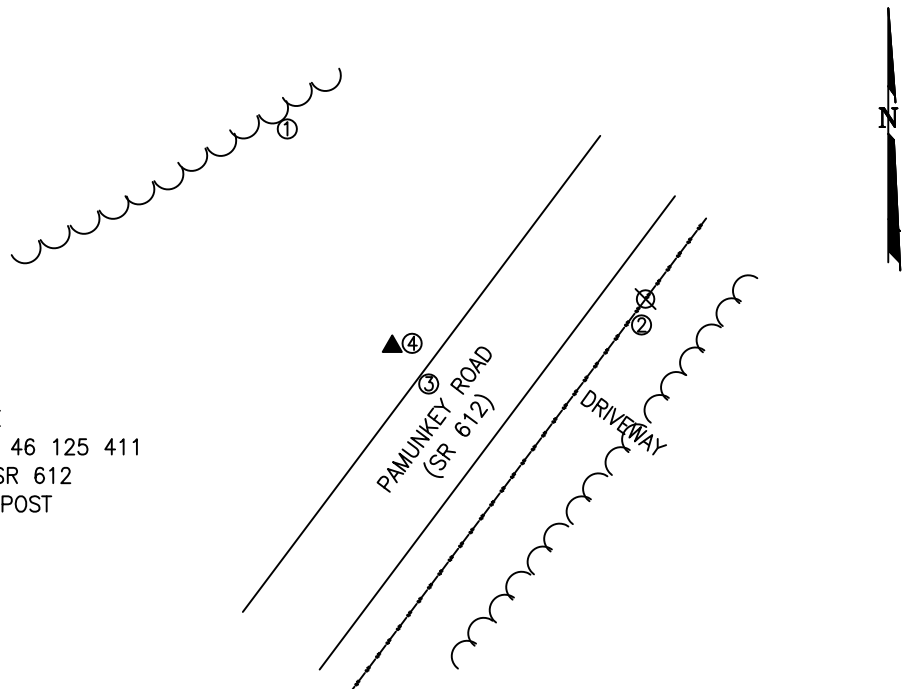
THE STATION IS LOCATED ABOUT 16.1 KM (10.0 MILES) WEST OF SPOTSYLVANIA, AND 13.0 KM (8.1 MILES) SOUTH OF LOCUST GROVE.

TO REACH THE STATION FROM THE INTERSECTION OF SR 208 (COURTHOUSE ROAD) AND SR 613 (BROCK ROAD), AT THE SPOTSYLVANIA COURTHOUSE, GO NORTH ON SR 613 FOR 0.8 KM (0.5 MILE) TO ITS INTERSECTION WITH SR 608 (ROBERT E LEE DRIVE). TURN LEFT AND GO WEST ON SR 608 FOR 8.0 KM (5.0 MILES) TO ITS INTERSECTION WITH OLDE MEADOW WAY. CONTINUE WEST SR 608 FOR 3.2 KM (2.0 MILES) TO ITS INTERSECTION WITH SR 608 (WEST CATHARPIN ROAD). CONTINUE WEST ON SR 608 FOR 0.5 KM (0.3 MILE) TO ITS INTERSECTION WITH SR 612 (PAMUNKEY ROAD). TURN LEFT AND GO SOUTH ON SR 612 FOR 3.7 KM (2.3 MILES) TO THE STATION ON THE RIGHT.

THE STATION IS A STANDARD SPOTSYLVANIA COUNTY, VA ALUMINUM SURVEY DISK SET INTO A POURED IN PLACE CONCRETE MONUMENT 10 INCHES IN DIAMETER, FLUSH WITH GROUND SURFACE AND STAMPED PAMUNKEY 2007.

SKETCH:

1. 70.0' SE OF A TREE LINE
2. 67.0' W OF A UP # 409 46 125 411
3. 8.0' N OF THE EP OF SR 612
4. 1.0' W OF A WITNESS POST



GEOMETRICS
GPS, INC.

DRAWN BY: KLS

CHECKED BY: DAR

DATE: 06/2008

APPROX. SCALE: 1" = 50'