

**SPOTSYLVANIA COUNTY VIRGINIA
2002/2003 CONTROL SURVEY**

JN 102-080

HORIZONTAL DATUM: NAD 83(2007) (REVISED 8-08)
 VERTICAL DATUM: NAVD 88
 COORDINATE SYSTEM: VIRGINIA STATE PLANE, NORTH ZONE
 UNITS: U.S. SURVEY FOOT

HORIZONTAL ORDER: FIRST
 VERTICAL ORDER: THIRD

COUNTY	NAME OF STATION	YEAR
SPOTSYLVANIA	OLD PLANK AZ	2002
N: 6789324.11	LAT: 38° 17' 18.50623"N	COMBINED FACTOR: 0.99995402
E: 11736156.03	LONG: 077° 37' 03.66285"W	⊖ ANGLE: 0° 33' 02"
ELEVATION: 331.57' (ESTABLISHED BY LEVELS)		
DISTANCES AND DIRECTIONS TO AZIMUTH MARKS		
STATION	GROUND DISTANCE	TRUE AZIMUTH
OLD PLANK	1028.43'	144° 46' 27"

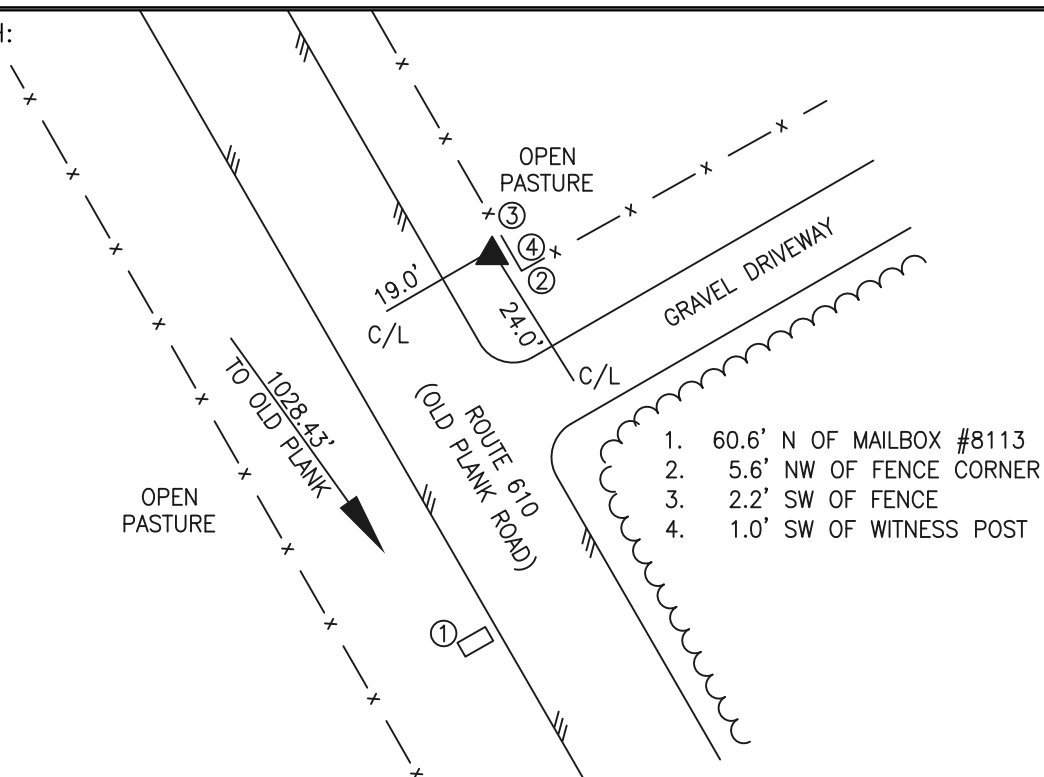
THE STATION IS LOCATED IN NORTH CENTRAL SPOTSYLVANIA COUNTY, VIRGINIA APPROXIMATELY 7.0 MILES (11.2 KM) WEST SOUTHWEST FROM THE CITY FREDERICKSBURG.

TO REACH THE STATION FROM THE INTERSECTION OF STATE ROUTE 3 (PLANK ROAD) AND STATE ROUTE 610 (OLD PLANK ROAD) PROCEED WESTERLY ALONG STATE ROUTE 610 (OLD PLANK ROAD) A DISTANCE OF 3.7 MILES (5.95 KM) TO ITS INTERSECTION WITH A ROCK DRIVEWAY ON THE RIGHT AND THE STATION ON THE RIGHT. PARK JUST NORTH OF STATION BETWEEN THE FENCE AND STATE ROUTE 610 (OLD PLANK ROAD).

THE STATION IS A 3 1/2 INCH SPOTSYLVANIA COUNTY, VIRGINIA ALUMINUM SURVEY DISK SET IN A Poured IN PLACE CONCRETE MONUMENT 10 INCHES IN DIAMETER FLUSH WITH THE GROUND SURFACE AND STAMPED OLD PLANK AZ 2002.

STATION OLD PLANK AZ IS INTERVISIBLE WITH STATION OLD PLANK.

SKETCH:



GEOMETRICS
S.P.A., INC.

DRAWN BY: BCL

CHECKED BY: DAR

DATE: 02/2003

APPROX. SCALE: 1" = 30'