

SPOTSYLVANIA COUNTY VIRGINIA 2002/2003 CONTROL SURVEY (RE-ADJUSTED 2008)

JN 102-080

HORIZONTAL DATUM: NAD 83(2007)
 VERTICAL DATUM: NAVD 88
 COORDINATE SYSTEM: VIRGINIA STATE PLANE, NORTH ZONE
 UNITS: U.S. SURVEY FOOT

HORIZONTAL ORDER: FIRST
 VERTICAL ORDER: THIRD

COUNTY	NAME OF STATION	YEAR
SPOTSYLVANIA	OLD PLANK	2002
N: 6788489.78	LAT: 38° 17' 10.20153"N	COMBINED FACTOR: 0.99995380
E: 11736757.25	LONG: 077° 36' 56.22308"W	⊖ ANGLE: 0° 33' 07"
ELEVATION: 340.86' (ESTABLISHED BY LEVELS)		

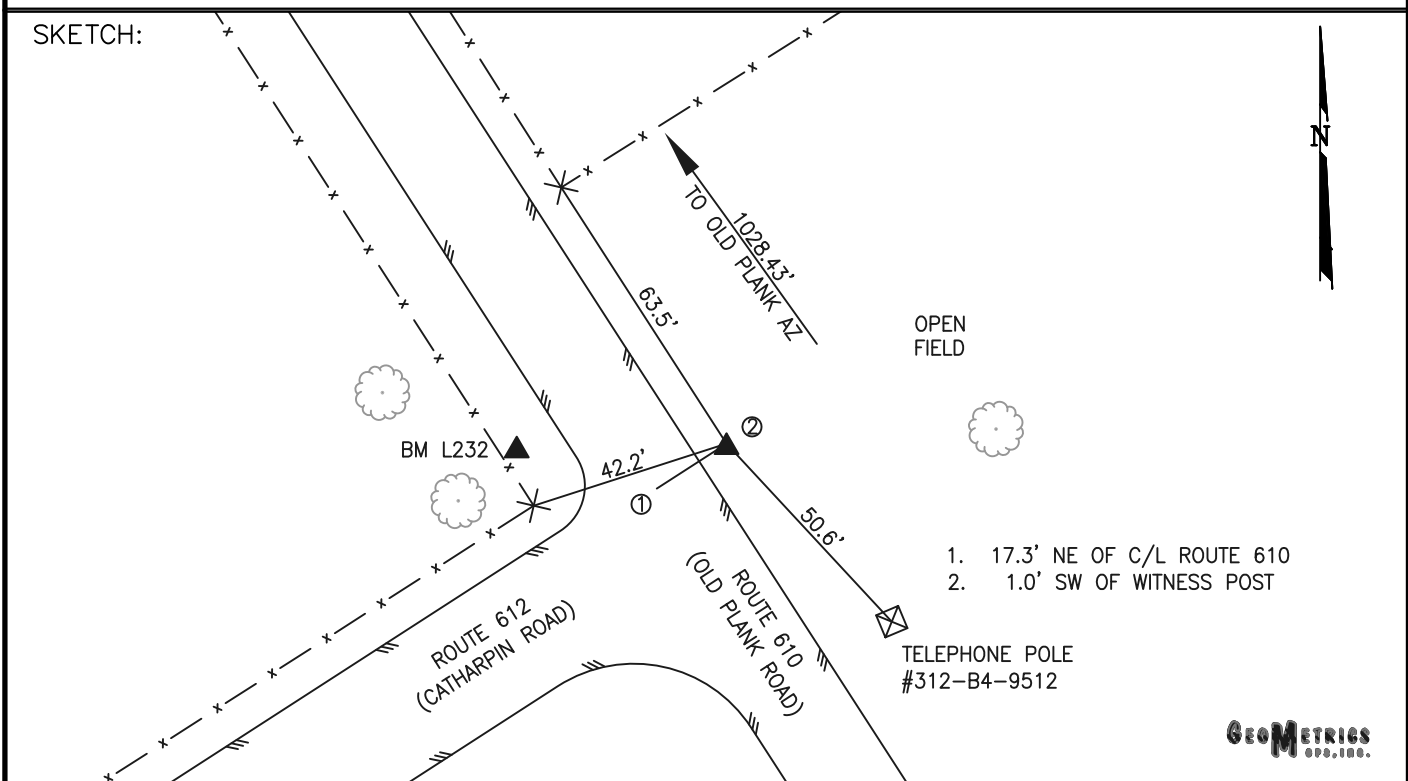
DISTANCES AND DIRECTIONS TO AZIMUTH MARKS		
STATION	GROUND DISTANCE	TRUE AZIMUTH
OLD PLANK AZ	1028.43'	324° 46' 31"

THE STATION IS LOCATED IN NORTH CENTRAL SPOTSYLVANIA COUNTY, VIRGINIA APPROXIMATELY 7.2 MILES (11.2 KM) WEST SOUTHWEST FROM THE CITY OF FREDERICKSBURG.

TO REACH THE STATION FROM THE EASTERN INTERSECTION OF STATE ROUTE 3 (PLANK ROAD) AND STATE ROUTE 610 (OLD PLANK ROAD), PROCEED WESTERLY ALONG STATE ROUTE 610 (OLD PLANK ROAD) A DISTANCE OF 3.5 MILES (5.6 KM) TO ITS INTERSECTION WITH STATE ROUTE 612 (CATHARPIN ROAD) AND THE STATION ON THE RIGHT.

THE STATION IS A 3 1/2 INCH SPOTSYLVANIA COUNTY, VIRGINIA ALUMINUM SURVEY DISK SET IN A Poured IN PLACE CONCRETE MONUMENT 10 INCHES IN DIAMETER FLUSH WITH THE GROUND SURFACE AND STAMPED OLD PLANK 2002.

STATION OLD PLANK IS INTERVISIBLE WITH STATION OLD PLANK AZ.



GEOMETRICS
 SPS, INC.

DRAWN BY: BCL	CHECKED BY: DAR	DATE: 02/2003	APPROX. SCALE: 1" = 40'
---------------	-----------------	---------------	-------------------------