

**SPOTSYLVANIA COUNTY VIRGINIA
2006-2007 CONTROL SURVEY (RE-ADJUSTED 2008)**

JN 106-134

HORIZONTAL DATUM: NAD 83(2007)
VERTICAL DATUM: NAVD 88
COORDINATE SYSTEM: VIRGINIA STATE PLANE, NORTH ZONE
UNITS: U.S. SURVEY FOOT

HORIZONTAL ORDER: FIRST
VERTICAL ORDER: THIRD

COUNTY	NAME OF STATION	YEAR
SPOTSYLVANIA	OAK AZ	2006
N: 6764638.83	LAT: 38° 13' 11.78126" N	COMBINED FACTOR: 0.99996655
E: 11763226.55	LONG: 077° 31' 27.43707" W	⊖ ANGLE: 0° 36' 32"
ELEVATION: 234.94' (ESTABLISHED BY GPS)		
DISTANCES AND DIRECTIONS TO AZIMUTH MARKS		
STATION	GROUND DISTANCE	TRUE AZIMUTH
OAK	3216.42'	237° 51' 57"

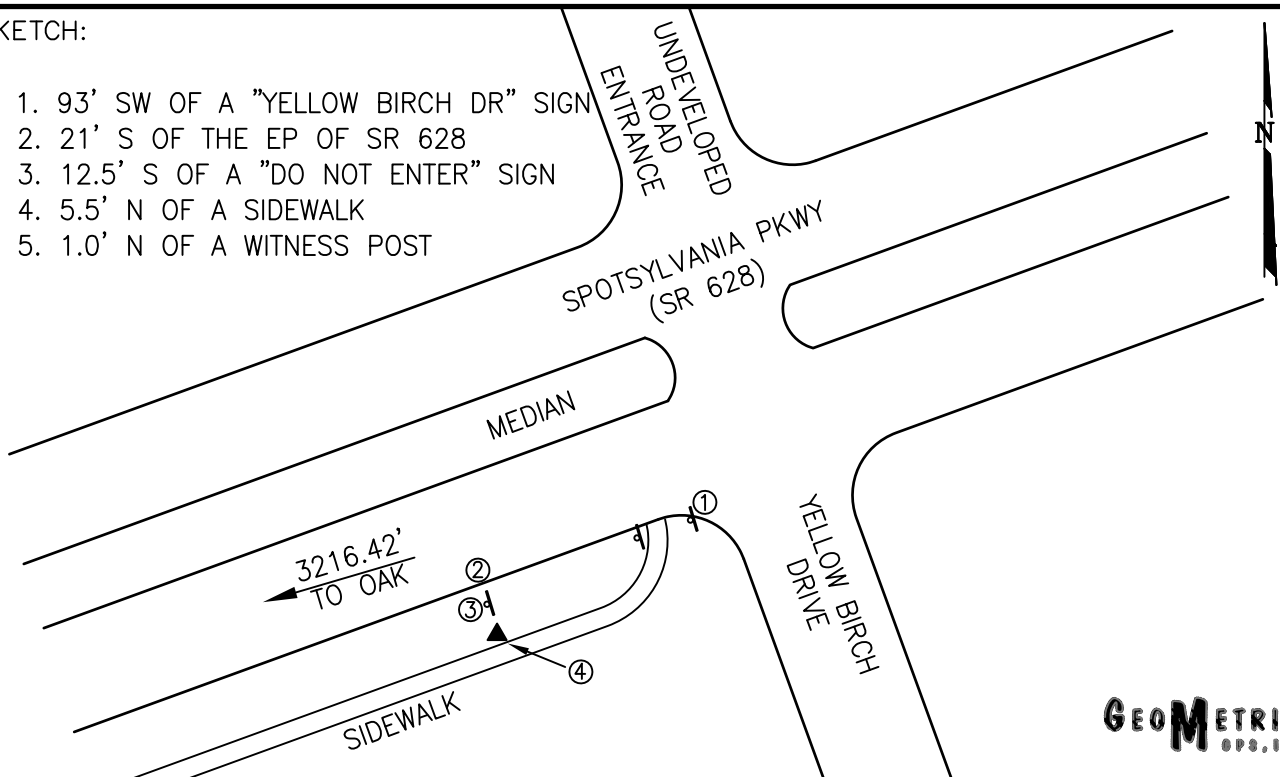
THE STATION IS LOCATED ABOUT 10.6 KM (6.6 MILES) SOUTHWEST OF FREDERICKSBURG, AND 9.8 KM (6.1 MILES) SOUTHEAST OF CHANCELLOR.

TO REACH THE STATION FROM THE INTERSECTION OF US HIGHWAY 1 (JEFFERSON DAVIS HIGHWAY) AND US HIGHWAY 17 (MILLS DRIVE), IN MASSAPONAX, GO SOUTH ON US 1 FOR 0.56 KM (0.35 MILE) TO ITS INTERSECTION WITH SR 628 (SPOTSYLVANIA PARKWAY). TURN RIGHT AND GO WEST ON SR 628 FOR 1.6 KM (1.0 MILE) TO ITS INTERSECTION WITH YELLOW BIRCH DRIVE AND THE STATION ON THE LEFT.

THE STATION IS A STANDARD SPOTSYLVANIA COUNTY, VA ALUMINUM SURVEY DISK SET INTO A Poured IN PLACE CONCRETE MONUMENT 10 INCHES IN DIAMETER, FLUSH WITH GROUND SURFACE AND STAMPED OAK AZ 2006.

SKETCH:

- 93' SW OF A "YELLOW BIRCH DR" SIGN
- 21' S OF THE EP OF SR 628
- 12.5' S OF A "DO NOT ENTER" SIGN
- 5.5' N OF A SIDEWALK
- 1.0' N OF A WITNESS POST



GEOMETRICS
SRS, INC.

DRAWN BY: BCL

CHECKED BY: DAR

DATE: 01/2007

APPROX. SCALE: 1" = 80'