

**SPOTSYLVANIA COUNTY VIRGINIA
2002/2003 CONTROL SURVEY**

JN 102-080

HORIZONTAL DATUM: NAD 83(2007) (REVISED 8-08)
 VERTICAL DATUM: NAVD 88
 COORDINATE SYSTEM: VIRGINIA STATE PLANE, NORTH ZONE
 UNITS: U.S. SURVEY FOOT

HORIZONTAL ORDER: FIRST
 VERTICAL ORDER: THIRD

| COUNTY | NAME OF STATION | YEAR |
|---|---------------------------|-----------------------------|
| SPOTSYLVANIA | NI | 2002 |
| N: 6773080.19 | LAT: 38° 14' 37.42367"N | COMBINED FACTOR: 0.99996280 |
| E: 11741458.94 | LONG: 077° 35' 59.15158"W | ⊖ ANGLE: 0° 33' 43" |
| ELEVATION: 247.37' (ESTABLISHED BY GPS) | | |

| DISTANCES AND DIRECTIONS TO AZIMUTH MARKS | | |
|---|-----------------|--------------|
| STATION | GROUND DISTANCE | TRUE AZIMUTH |
| NI AZ | 1445.69' | 261° 00' 10" |

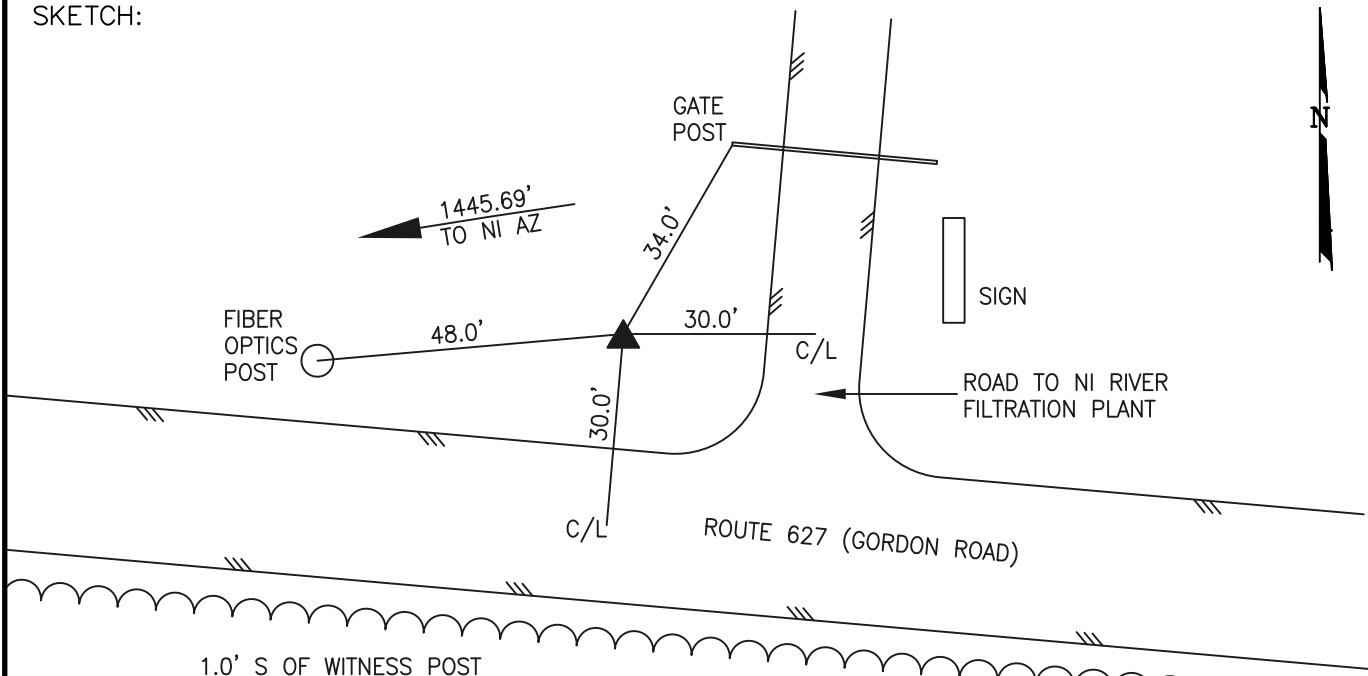
THE STATION IS LOCATED IN NORTH-CENTRAL SPOTSYLVANIA COUNTY, VIRGINIA, APPROXIMATELY 7 MILES (11.2 KM) SOUTHWEST FROM THE CITY OF FREDERICKSBURG.

TO REACH THE STATION FROM THE INTERSECTION OF STATE ROUTE 3 (PLANK ROAD) AND STATE ROUTE 627 (GORDON ROAD) PROCEED SOUTHERLY ALONG STATE ROUTE 627 (GORDON ROAD) A DISTANCE OF 4.1 MILES (6.6 KM) TO THE INTERSECTION WITH THE PAVED ENTRANCE ROAD ON THE RIGHT TO NI RESERVOIR AND THE STATION ON THE RIGHT.

THE STATION IS A 3 1/2 INCH SPOTSYLVANIA COUNTY, VIRGINIA ALUMINUM SURVEY DISK, SET IN A Poured IN PLACE CONCRETE MONUMENT, 10 INCHES IN DIAMETER, FLUSH WITH THE GROUND SURFACE AND STAMPED NI 2002.

STATION NI IS INTERVISIBLE WITH STATION NI AZ.

SKETCH:



GEOMETRICS
INC.

| | | | |
|---------------|-----------------|---------------|-------------------------|
| DRAWN BY: BCL | CHECKED BY: DAR | DATE: 02/2003 | APPROX. SCALE: 1" = 30' |
|---------------|-----------------|---------------|-------------------------|