

SPOTSYLVANIA COUNTY VIRGINIA 2005 CONTROL SURVEY

JN 104-085

HORIZONTAL DATUM: NAD 83(2007) (REVISED 8-08)
 VERTICAL DATUM: NAVD 88
 COORDINATE SYSTEM: VIRGINIA STATE PLANE, NORTH ZONE
 UNITS: U.S. SURVEY FOOT

HORIZONTAL ORDER: FIRST
 VERTICAL ORDER: THIRD

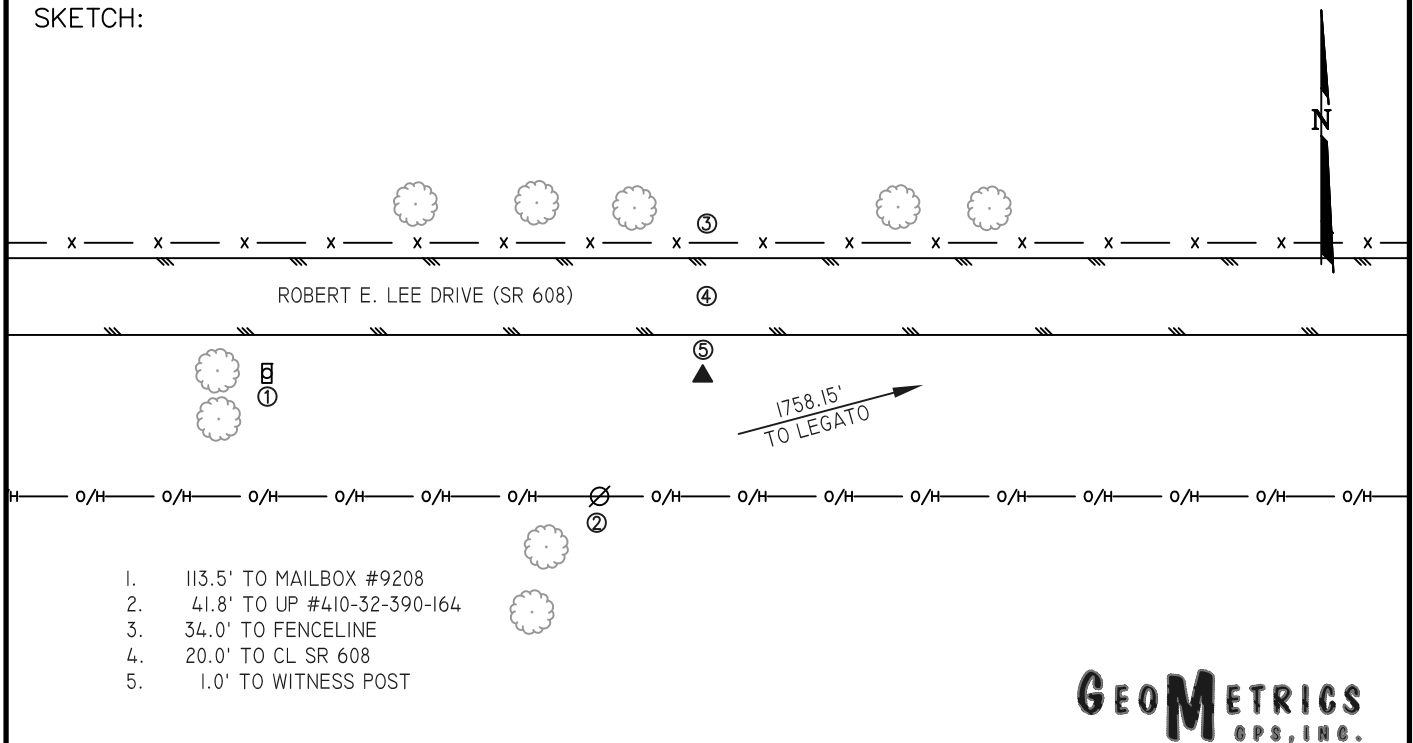
COUNTY	NAME OF STATION	YEAR
SPOTSYLVANIA	MYSTIC	2005
N: 6759297.30	LAT: 38° 12' 22.61026" N	COMBINED FACTOR: 0.99997398
E: 11726223.08	LONG: 077° 39' 11.71661" W	⊖ ANGLE: 0° 31' 43"
ELEVATION: 310.78' (ESTABLISHED BY GPS)		
DISTANCES AND DIRECTIONS TO AZIMUTH MARKS		
STATION	GROUND DISTANCE	TRUE AZIMUTH
LEGATO	1758.15	76°00'24"

THE STATION IS LOCATED IN SPOTSYLVANIA COUNTY, VIRGINIA, APPROXIMATELY 14.0 KM (8.7 MILES) NORTHWEST OF THORNBERG, AND 5.6 KM (3.5 MILES) WEST OF THE SPOTSYLVANIA COUNTY COURTHOUSE.

TO REACH THE STATION FROM THE INTERSECTION OF SR 208 (COURTHOUSE ROAD) AND SR 613 (BROCK ROAD) AT THE SPOTSYLVANIA COUNTY COURTHOUSE, GO NORTHWEST ON SR 613 FOR 0.8 KM (0.5 MILE) TO ITS INTERSECTION WITH SR 608 (ROBERT E LEE DRIVE). TURN LEFT AND GO SOUTHWEST ON SR 608 FOR 5.5 KM (3.4 MILES) TO ITS INTERSECTION WITH MYSTIC LANE. CONTINUE SOUTHWEST ON SR 608 FOR APPROXIMATELY 100 METERS (328 FEET) TO THE STATION ON THE LEFT, JUST BEFORE HOUSE NUMBER 9208 ROBERT E LEE DRIVE .

THE STATION IS A SPOTSYLVANIA COUNTY, VA ALUMINUM SURVEY DISK SET INTO A Poured IN PLACE CONCRETE MONUMENT 10 INCHES IN DIAMETER, FLUSH WITH THE GROUND SURFACE AND STAMPED MYSTIC 2005. STATION MYSTIC IS INTER-VISIBLE WITH STATION LEGATO.

SKETCH:



GEOMETRICS
GPS, INC.

DRAWN BY: BCL

CHECKED BY: DAR

DATE: 06/2005

APPROX. SCALE: 1" = 50'