

# SPOTSYLVANIA COUNTY VIRGINIA 2007 GEODETIC CONTROL SURVEY

JN 107-065

HORIZONTAL DATUM: NAD 83(2007)  
 VERTICAL DATUM: NAVD 88  
 COORDINATE SYSTEM: VIRGINIA STATE PLANE, NORTH ZONE  
 UNITS: U.S. SURVEY FOOT

HORIZONTAL ORDER: FIRST  
 VERTICAL ORDER: THIRD

COUNTY	NAME OF STATION	YEAR
SPOTSYLVANIA	MINE	2007
N: 6744870.95	LAT: 38° 10' 01.65266" N	COMBINED FACTOR: 0.99996603
E: 11707384.88	LONG: 77° 43' 09.25776" W	⊖ ANGLE: 0° 29' 14"
ELEVATION: 379.52' (ESTABLISHED BY GPS)		
DISTANCES AND DIRECTIONS TO AZIMUTH MARKS		
STATION	GROUND DISTANCE	TRUE AZIMUTH
MINE AZ	828.04	210° 19' 58"

THE STATION IS LOCATED ABOUT 17.0 KM (10.6 MILES) SOUTHEAST OF LOCUST GROVE, AND 12.1 KM (7.5 MILES) SOUTHWEST OF SPOTSYLVANIA.

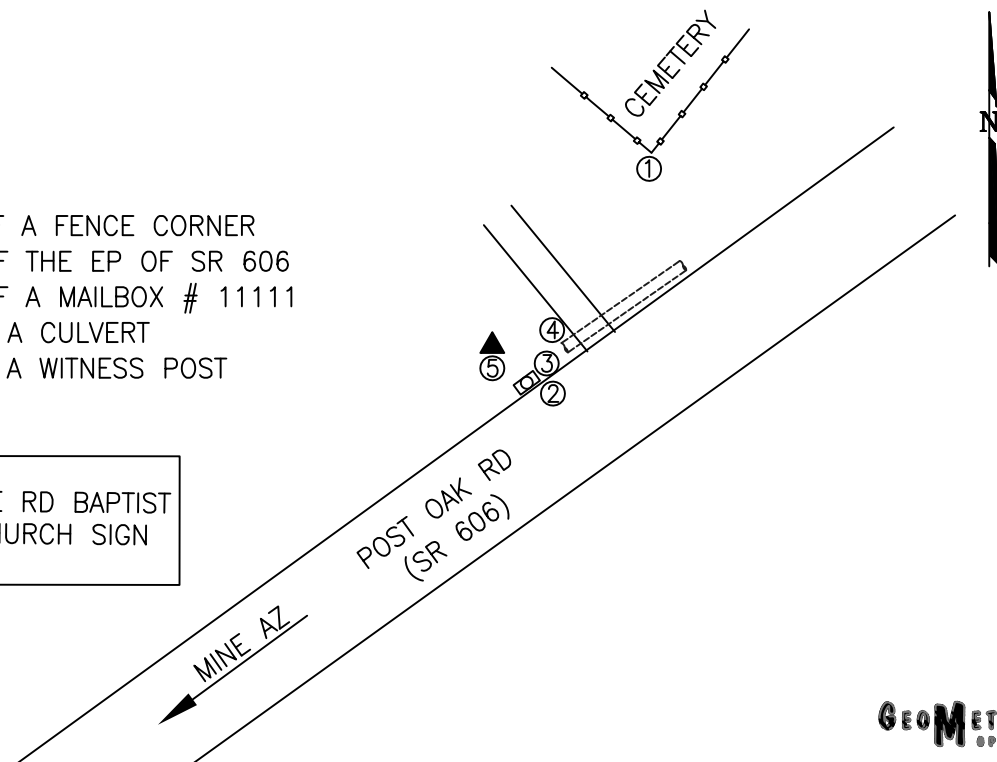
TO REACH THE STATION FROM THE INTERSECTION OF SR 208 (COURTHOUSE ROAD) AND SR 613 (BROCK ROAD), AT THE SPOTSYLVANIA COURTHOUSE, GO NORTH ON SR 613 FOR 0.8 KM (0.5 MILE) TO ITS INTERSECTION WITH SR 608 (ROBERT E LEE DRIVE). TURN LEFT AND GO WEST ON SR 608 FOR 1.9 KM (1.2 MILES) TO ITS INTERSECTION WITH SR 648 (BLOCKHOUSE ROAD). TURN LEFT AND GO SOUTH ON SR 648 FOR 4.7 KM (2.9 MILES) TO ITS INTERSECTION WITH SR 208 (COURTHOUSE ROAD). TURN RIGHT AND GO WEST ON SR 208 FOR 2.1 KM (1.3 MILES) TO ITS INTERSECTION WITH SR 606 (POST OAK ROAD). CONTINUE WEST ON SR 606 FOR 2.6 KM (1.6 MILES) TO ITS INTERSECTION WITH SR 649 (SEAYS RD). CONTINUE WEST ON SR 606 FOR 2.9 KM (1.8 MILES) TO THE STATION ON THE RIGHT AT THE ENTRANCE TO THE MINE ROAD BAPTIST CHURCH.

THE STATION IS A STANDARD SPOTSYLVANIA COUNTY, VA ALUMINUM SURVEY DISK SET INTO A Poured IN PLACE CONCRETE MONUMENT 10 INCHES IN DIAMETER, FLUSH WITH GROUND SURFACE AND STAMPED MINE 2007.

SKETCH:

1. 51.6' SW OF A FENCE CORNER
2. 13.3' NW OF THE EP OF SR 606
3. 12.3' NW OF A MAILBOX # 11111
4. 14.5' W OF A CULVERT
5. 1.0' N OF A WITNESS POST

MINE RD BAPTIST  
CHURCH SIGN



**GEOMETRICS**  
GPS, INC.

DRAWN BY: KLS

CHECKED BY: DAR

DATE: 06/2008

APPROX. SCALE: 1" = 40'