

**SPOTSYLVANIA COUNTY VIRGINIA
2006 CONTROL SURVEY (RE-ADJUSTED 2008)**

JN 105-138

HORIZONTAL DATUM: NAD 83(2007)
VERTICAL DATUM: NAVD 88
COORDINATE SYSTEM: VIRGINIA STATE PLANE, NORTH ZONE
UNITS: U.S. SURVEY FOOT

HORIZONTAL ORDER: FIRST
VERTICAL ORDER: THIRD

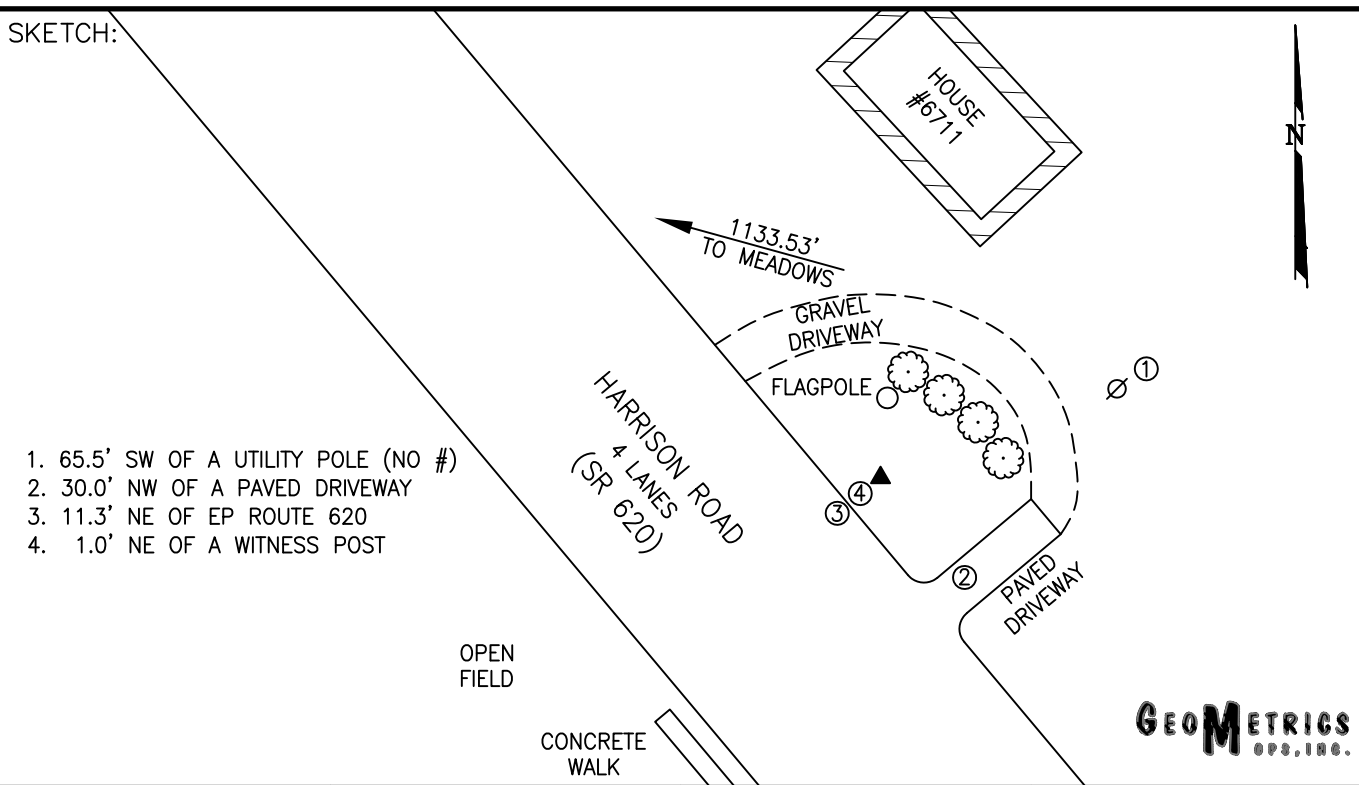
COUNTY	NAME OF STATION	YEAR
SPOTSYLVANIA	MEADOWS AZ	2006
N: 6788327.33	LAT: 38° 17' 06.98650" N	COMBINED FACTOR: 0.99996510
E: 11753127.56	LONG: 077° 33' 30.93457" W	⊖ ANGLE: 0° 35' 15.2"
ELEVATION: 355.31' (ESTABLISHED BY GPS)		
DISTANCES AND DIRECTIONS TO AZIMUTH MARKS		
STATION	GROUND DISTANCE	TRUE AZIMUTH
MEADOWS	1133.53'	286°48'01"

THE STATION IS LOCATED ABOUT 9.8 KM (6.1 MILES) NORTH OF SPOTSYLVANIA, AND 8.7 KM (5.4 MILES) SOUTHWEST OF FREDERICKSBURG.

TO REACH THE STATION FROM THE INTERSECTION OF INTERSTATE 95 AND SR 3 (PLANK ROAD) (AT EXIT 130), GO WEST ON SR 3 FOR 2.4 KM (1.5 MILES) TO ITS INTERSECTION WITH SR 639 (SALEM CHURCH ROAD). CONTINUE WEST ON SR 3 FOR 3.2 KM (2.0 MILES) TO ITS INTERSECTION WITH SR 620 (HARRISON ROAD). TURN LEFT AND GO SOUTH ON SR 620 FOR 0.80 KM (0.5 MILE) TO ITS INTERSECTION WITH SR 627 (GORDON ROAD). CONTINUE SOUTH ON SR 620 FOR 0.40 KM (0.25 MILE) TO THE STATION ON THE LEFT.

THE STATION IS A STANDARD SPOTSYLVANIA COUNTY, VA ALUMINUM SURVEY DISK SET INTO A POURED IN PLACE CONCRETE MONUMENT 10 INCHES IN DIAMETER, FLUSH WITH THE GROUND SURFACE AND STAMPED MEADOWS AZ 2006.

SKETCH:



1. 65.5' SW OF A UTILITY POLE (NO #)
2. 30.0' NW OF A PAVED DRIVEWAY
3. 11.3' NE OF EP ROUTE 620
4. 1.0' NE OF A WITNESS POST

GEOMETRICS
S.P.S., INC.