

SPOTSYLVANIA COUNTY VIRGINIA 2007 GEODETIC CONTROL SURVEY

JN 107-065

HORIZONTAL DATUM: NAD 83(2007)
 VERTICAL DATUM: NAVD 88
 COORDINATE SYSTEM: VIRGINIA STATE PLANE, NORTH ZONE
 UNITS: U.S. SURVEY FOOT

HORIZONTAL ORDER: FIRST
 VERTICAL ORDER: THIRD

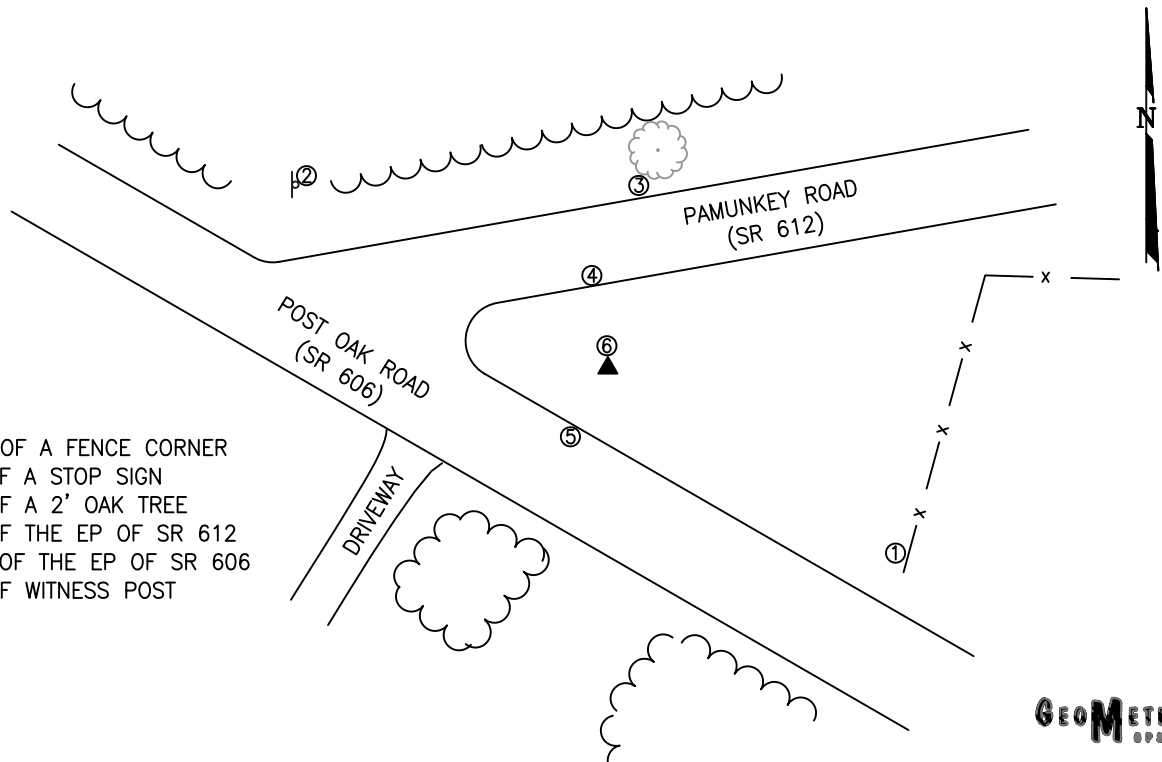
COUNTY	NAME OF STATION	YEAR
SPOTSYLVANIA	MASTINS	2007
N: 6752969.47	LAT: 38° 11' 23.00023" N	COMBINED FACTOR: 0.99996100
E: 11691466.15	LONG: 77° 46' 27.77844" W	⊖ ANGLE: 0° 27' 10"
ELEVATION: 422.13' (ESTABLISHED BY GPS)		
DISTANCES AND DIRECTIONS TO AZIMUTH MARKS		
STATION	GROUND DISTANCE	TRUE AZIMUTH

THE STATION IS LOCATED ABOUT 16.1 KM (10.0 MILES) WEST OF SPOTSYLVANIA, AND 13.0 KM (8.1 MILES) SOUTH OF LOCUST GROVE.

TO REACH THE STATION FROM THE INTERSECTION OF SR 208 (COURTHOUSE ROAD) AND SR 613 (BROCK ROAD), AT THE SPOTSYLVANIA COURTHOUSE, GO NORTH ON SR 613 FOR 0.8 KM (0.5 MILE) TO ITS INTERSECTION WITH SR 608 (ROBERT E LEE DRIVE). TURN LEFT AND GO WEST ON SR 608 FOR 8.0 KM (5.0 MILES) TO ITS INTERSECTION WITH OLDE MEADOW WAY. CONTINUE WEST SR 608 FOR 3.2 KM (2.0 MILES) TO ITS INTERSECTION WITH SR 608 (WEST CATHARPIN ROAD). CONTINUE WEST ON SR 608 FOR 0.5 KM (0.3 MILE) TO ITS INTERSECTION WITH SR 612 (PAMUNKEY ROAD). TURN LEFT AND GO SOUTH ON SR 612 FOR 6.6 KM (4.1 MILES) TO ITS INTERSECTION WITH SR 606 (POST OAK ROAD) AND THE STATION ON THE LEFT AT THE INTERSECTION.

THE STATION IS A STANDARD SPOTSYLVANIA COUNTY, VA ALUMINUM SURVEY DISK SET INTO A Poured IN PLACE CONCRETE MONUMENT 10 INCHES IN DIAMETER, FLUSH WITH GROUND SURFACE AND STAMPED MASTINS 2007.

SKETCH:



1. 94.0' NW OF A FENCE CORNER
2. 94.0' E OF A STOP SIGN
3. 51.0' S OF A 2' OAK TREE
4. 21.0' S OF THE EP OF SR 612
5. 18.0' NE OF THE EP OF SR 606
6. 1.0' S OF WITNESS POST

GEOMETRICS
GPS, INC.