

# SPOTSYLVANIA COUNTY VIRGINIA 2005 CONTROL SURVEY

JN 104-085

HORIZONTAL DATUM: NAD 83(2007) (REVISED 8-08)  
 VERTICAL DATUM: NAVD 88  
 COORDINATE SYSTEM: VIRGINIA STATE PLANE, NORTH ZONE  
 UNITS: U.S. SURVEY FOOT

HORIZONTAL ORDER: FIRST  
 VERTICAL ORDER: THIRD

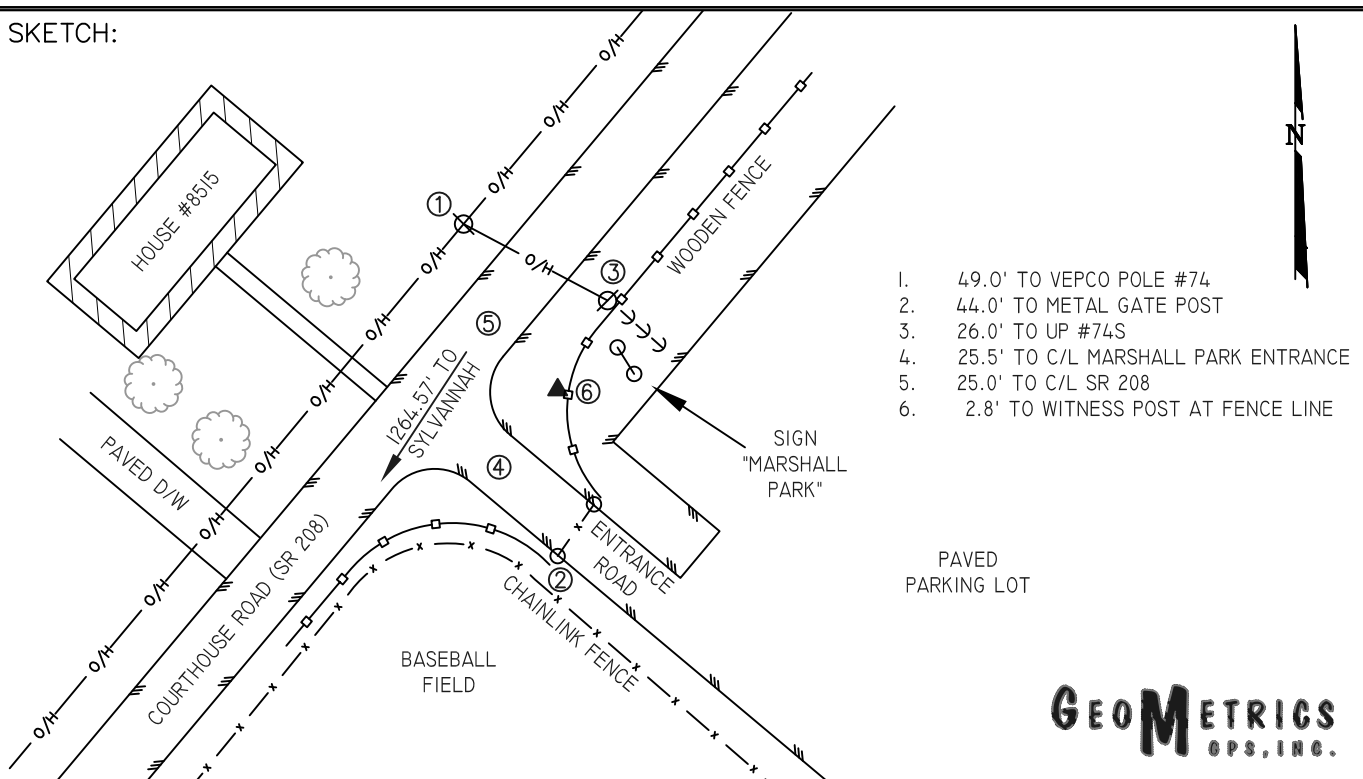
COUNTY	NAME OF STATION	YEAR
SPOTSYLVANIA	MARSHALL	2005
N: 6753904.54	LAT: 38° 11' 27.48572" N	COMBINED FACTOR: 0.99997592
E: 11745387.63	LONG: 077° 35' 12.29940" W	∅ ANGLE: 0° 34' 12"
ELEVATION: 312.24' (ESTABLISHED BY GPS)		
DISTANCES AND DIRECTIONS TO AZIMUTH MARKS		
STATION	GROUND DISTANCE	TRUE AZIMUTH
SYLVANNAH	1264.57	213°07'51"

THE STATION IS LOCATED IN SPOTSYLVANIA COUNTY, VIRGINIA, APPROXIMATELY 7.9 KM (4.9 MILES) NORTHWEST OF THORNBURG AND 1.4 KM (0.9 MILE) SOUTH OF THE SPOTSYLVANIA COUNTY COURTHOUSE.

TO REACH THE STATION FROM THE INTERSECTION OF SR 208 (COURTHOUSE ROAD) AND SR 613 (BROCK ROAD) AT THE SPOTSYLVANIA COUNTY COURTHOUSE, GO SOUTH ON SR 208 FOR 1.3 KM (0.8 MILE) TO THE STATION ON THE LEFT AT THE ENTRANCE TO MARSHALL PARK.

THE STATION IS A SPOTSYLVANIA COUNTY, VA ALUMINUM SURVEY DISK SET INTO A POURED IN PLACE CONCRETE MONUMENT 10 INCHES IN DIAMETER, RECESSED 0.1 FOOT BELOW THE GROUND SURFACE AND STAMPED MARSHALL 2005. STATION MARSHALL IS INTER-VISIBLE WITH STATION SYLVANNAH.

SKETCH:



1. 49.0' TO VEPCO POLE #74
2. 44.0' TO METAL GATE POST
3. 26.0' TO UP #74S
4. 25.5' TO C/L MARSHALL PARK ENTRANCE
5. 25.0' TO C/L SR 208
6. 2.8' TO WITNESS POST AT FENCE LINE

**GEOMETRICS**  
GPS, INC.

DRAWN BY: BCL

CHECKED BY: DAR

DATE: 06/2005

APPROX. SCALE: 1" = 50'