

**SPOTSYLVANIA COUNTY VIRGINIA
2006-2007 CONTROL SURVEY (RE-ADJUSTED 2008)**

JN 106-134

HORIZONTAL DATUM: NAD 83(2007)
 VERTICAL DATUM: NAVD 88
 COORDINATE SYSTEM: VIRGINIA STATE PLANE, NORTH ZONE
 UNITS: U.S. SURVEY FOOT

HORIZONTAL ORDER: FIRST
 VERTICAL ORDER: THIRD

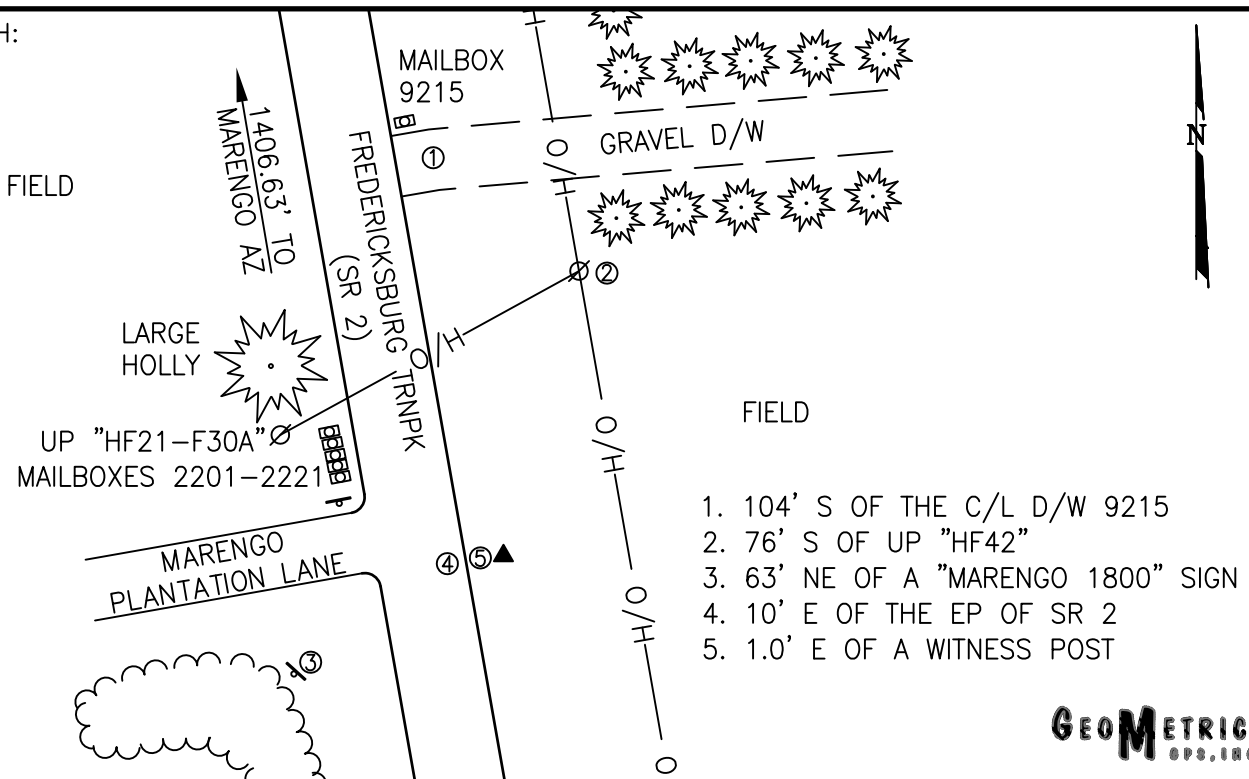
COUNTY	NAME OF STATION	YEAR
SPOTSYLVANIA	MARENGO	2006
N: 6763187.90	LAT: 38° 12' 53.55503" N	COMBINED FACTOR: 0.99997255
E: 11798032.00	LONG: 077° 24' 11.54637" W	⊖ ANGLE: 0° 41' 04"
ELEVATION: 120.46' (ESTABLISHED BY GPS)		
DISTANCES AND DIRECTIONS TO AZIMUTH MARKS		
STATION	GROUND DISTANCE	TRUE AZIMUTH
MARENGO AZ	1406.63'	335° 42' 50"

THE STATION IS LOCATED ABOUT 16.1 KM (10.0 MILES) EAST OF SPOTSYLVANIA, AND 10.9 KM (6.8 MILES) SOUTH OF FREDERICKSBURG.

TO REACH THE STATION FROM THE INTERSECTION OF US HIGHWAY 17 (MILLS DRIVE) AND SR 2 (FREDERICKSBURG TURNPIKE), IN NEW POST, GO SOUTH ON SR 2 FOR 1.8 KM (1.15 MILES) TO ITS INTERSECTION WITH MARENGO PLANTATION LANE AND THE STATION ON THE LEFT.

THE STATION IS A STANDARD SPOTSYLVANIA COUNTY, VA ALUMINUM SURVEY DISK SET INTO A Poured IN PLACE CONCRETE MONUMENT 10 INCHES IN DIAMETER, FLUSH WITH GROUND SURFACE AND STAMPED MARENGO 2006.

SKETCH:



1. 104' S OF THE C/L D/W 9215
2. 76' S OF UP "HF42"
3. 63' NE OF A "MARENGO 1800" SIGN
4. 10' E OF THE EP OF SR 2
5. 1.0' E OF A WITNESS POST

GEOMETRICS
S.P.S., INC.

DRAWN BY: BCL

CHECKED BY: DAR

DATE: 01/2007

APPROX. SCALE: 1" = 50'