

SPOTSYLVANIA COUNTY VIRGINIA 2002 CONTROL SURVEY

JN 102-040

HORIZONTAL DATUM: NAD 83(2007) (REVISED 8-08)
 VERTICAL DATUM: NAVD 88
 COORDINATE SYSTEM: VIRGINIA STATE PLANE, NORTH ZONE
 UNITS: U.S. SURVEY FOOT

HORIZONTAL ORDER: FIRST
 VERTICAL ORDER: THIRD

COUNTY	NAME OF STATION	YEAR
SPOTSYLVANIA	MANSFIELD	2002
N: 6783941.64	LAT: 38° 16' 20.21247" N	COMBINED FACTOR: 0.99996834
E: 11785000.76	LONG: 77° 26' 51.83508" W	∅ ANGLE: 0° 39' 24.3"
ELEVATION: 66.53 (ESTABLISHED BY GPS)		
DISTANCES AND DIRECTIONS TO AZIMUTH MARKS		
STATION	GROUND DISTANCE	TRUE AZIMUTH
MANSFIELD AZ	1947.50'	142°09'42"

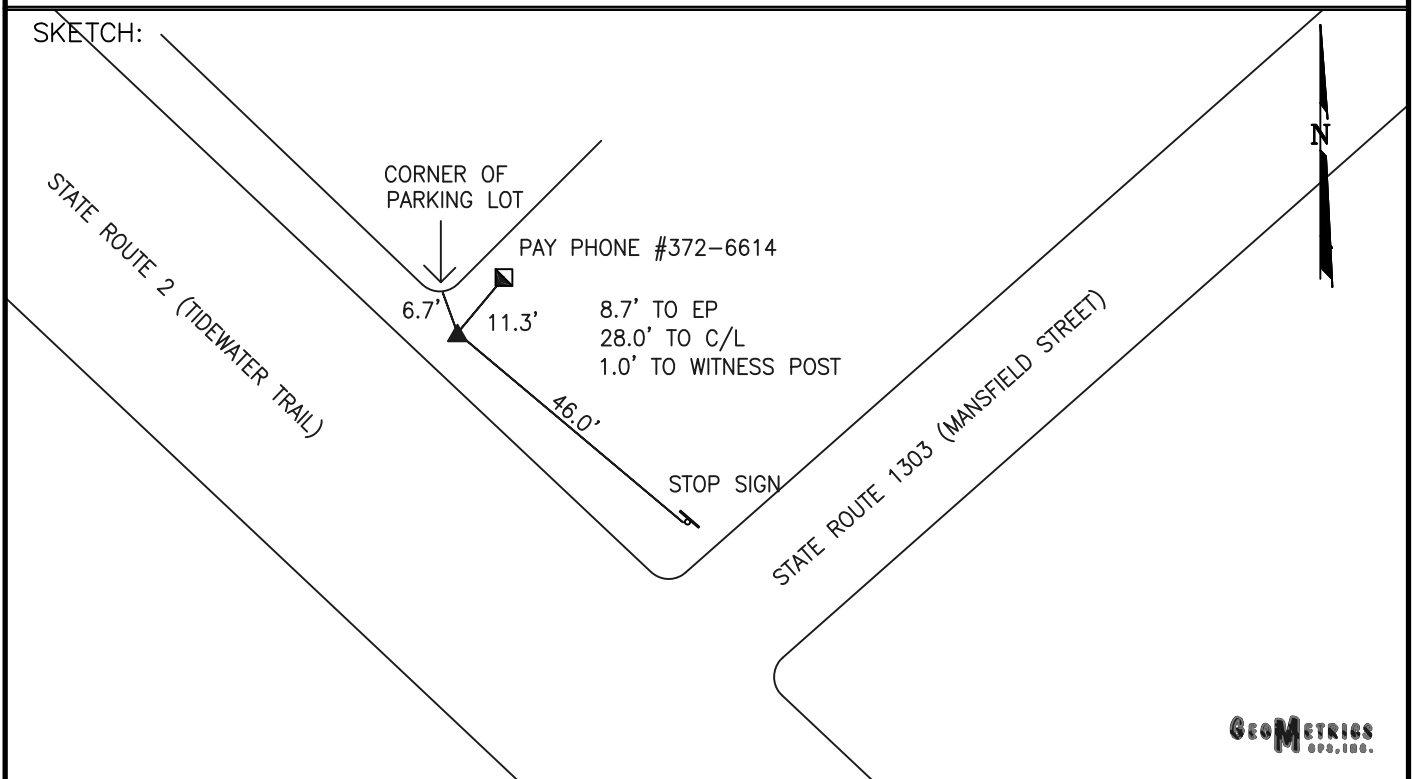
THE STATION IS LOCATED IN SPOTSYLVANIA COUNTY, VIRGINIA APPROXIMATELY 1.5 MILES SOUTH FROM THE CITY OF FREDERICKSBURG.

TO REACH THE STATION FROM THE POST OFFICE AT 600 PRINCESS ANNE STREET IN THE CITY OF FREDERICKSBURG, PROCEED SOUTHEAST ALONG PRINCESS ANNE STREET 0.3 MILE TO ITS INTERSECTION WITH DIXON STREET. TURN RIGHT AND PROCEED SOUTHWEST ALONG DIXON STREET A DISTANCE OF 0.05 MILE TO ITS INTERSECTION WITH STATE ROUTE 2. TURN LEFT AND PROCEED SOUTH ALONG STATE ROUTE 2 A DISTANCE OF 1.7 MILES TO ITS INTERSECTION WITH MANSFIELD STREET AND THE STATION ON THE LEFT IN FRONT OF A STRIP MALL WITH A FAST MART.

THE STATION IS A 3 1/2 INCH SPOTSYLVANIA COUNTY, VA ALUMINUM SURVEY DISK SET IN A POURED IN PLACE CONCRETE MONUMENT FLUSH WITH THE GROUND SURFACE AND STAMPED MANSFIELD 2002.

THIS STATION IS INTERVISIBLE WITH STATION MANSFIELD AZ 2002.

SKETCH:



GEOMETRICS
INC. 1980.

DRAWN BY: KNT

CHECKED BY: CEN

DATE: 08/2002

APPROX. SCALE: 1" = 30'