

**SPOTSYLVANIA COUNTY VIRGINIA
2003-2004 CONTROL SURVEY**

JN 103-060

HORIZONTAL DATUM: NAD 83(2007) (REVISED 8-08)
 VERTICAL DATUM: NAVD 88
 COORDINATE SYSTEM: VIRGINIA STATE PLANE, NORTH ZONE
 UNITS: U.S. SURVEY FOOT

HORIZONTAL ORDER: FIRST
 VERTICAL ORDER: THIRD

COUNTY	NAME OF STATION	YEAR
SPOTSYLVANIA	MALLARD AZ	2004
N: 6731371.20	LAT: 38° 07' 42.53410" N	COMBINED FACTOR: 0.99998457
E: 11766948.48	LONG: 77° 30' 45.28484" W	⊖ ANGLE: 0° 36' 59"
ELEVATION: 256.99' (ESTABLISHED BY GPS)		
DISTANCES AND DIRECTIONS TO AZIMUTH MARKS		
STATION	GROUND DISTANCE	TRUE AZIMUTH
MALLARD	1424.46'	22° 04' 31"

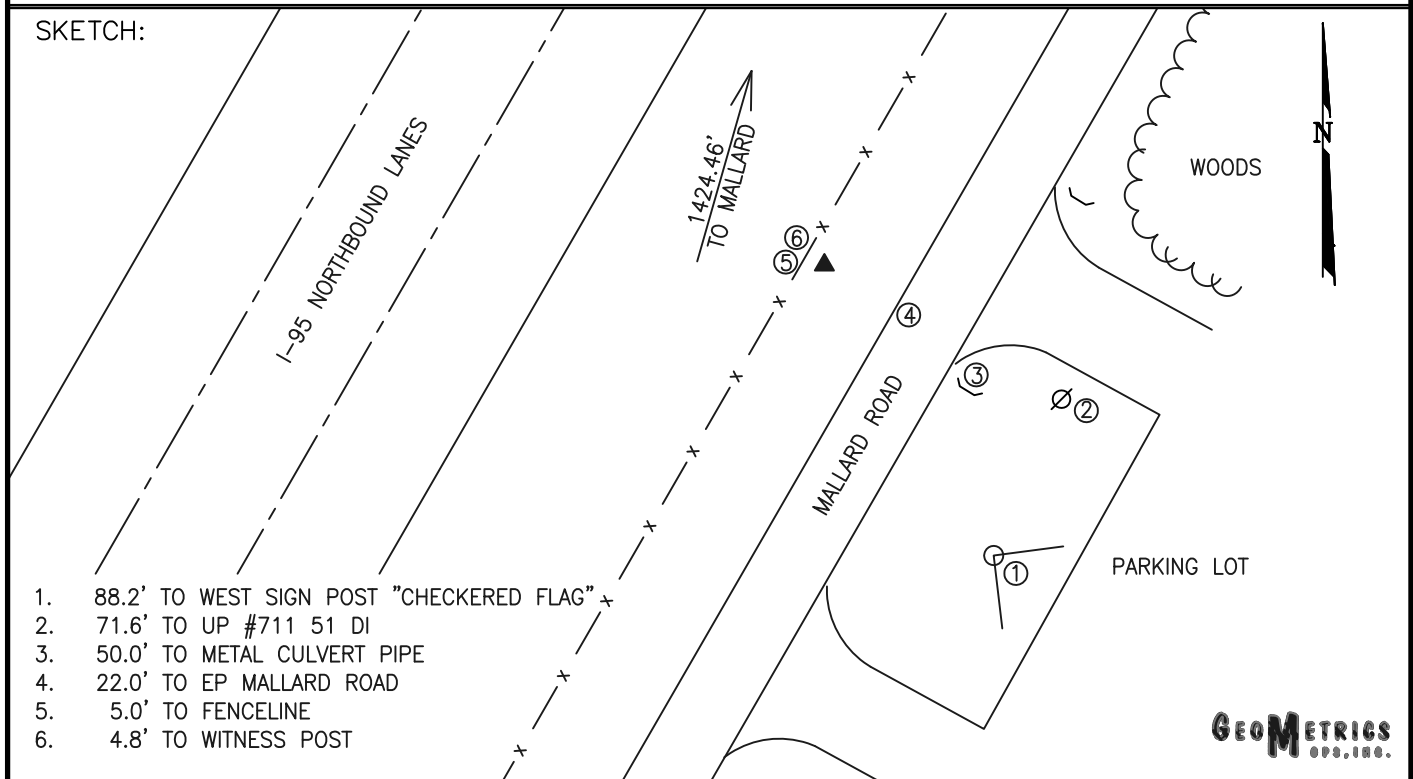
THE STATION IS LOCATED IN SPOTSYLVANIA COUNTY, VIRGINIA, APPROXIMATELY 19.3 KM (12.0 MILES) SOUTH OF THE CITY OF FREDERICKSBURG AND 10.3 KM (6.4 MILES) SOUTHEAST OF THE SPOTSYLVANIA COURTHOUSE.

TO REACH THE STATION FROM THE INTERSECTION OF US HIGHWAY 1 (JEFFERSON DAVIS HIGHWAY) AND STATE ROUTE 606 (MORRIS ROAD/MUDD TAVERN ROAD) GO EAST ON STATE ROUTE 606 FOR 1.1 KM (0.7 MILE) TO ITS INTERSECTION WITH MALLARD ROAD. TURN RIGHT AND GO SOUTH ON MALLARD ROAD FOR 0.5 KM (0.3 MILE) TO THE STATION ON THE RIGHT.

STATION MALLARD AZ IS INTERVISIBLE WITH STATION MALLARD.

THE STATION IS A 3 ½ INCH SPOTSYLVANIA COUNTY, VA ALUMINUM SURVEY DISK SET INTO A POURED IN PLACE CONCRETE MONUMENT 10 INCHES IN DIAMETER, FLUSH WITH THE GROUND SURFACE AND STAMPED MALLARD AZ 2004.

SKETCH:



1. 88.2' TO WEST SIGN POST "CHECKERED FLAG" x
2. 71.6' TO UP #711 51 DI
3. 50.0' TO METAL CULVERT PIPE
4. 22.0' TO EP MALLARD ROAD
5. 5.0' TO FENCELINE
6. 4.8' TO WITNESS POST



DRAWN BY: BCL	CHECKED BY: LLR	DATE: 04/2004	APPROX. SCALE: 1" = 50'
---------------	-----------------	---------------	-------------------------