

SPOTSYLVANIA COUNTY VIRGINIA 2002 CONTROL SURVEY

JN 102-040

HORIZONTAL DATUM: NAD 83(2007) (REVISED 8-08)
 VERTICAL DATUM: NAVD 88
 COORDINATE SYSTEM: VIRGINIA STATE PLANE, NORTH ZONE
 UNITS: U.S. SURVEY FOOT

HORIZONTAL ORDER: FIRST
 VERTICAL ORDER: THIRD

COUNTY	NAME OF STATION	YEAR
SPOTSYLVANIA	LUCKSTONE AZ	2002
N: 6762936.98	LAT: 38° 12' 55.70163" N	COMBINED FACTOR: 0.99996336
E: 11756059.23	LONG: 77° 32' 57.46514" W	∅ ANGLE: 0° 35' 36.1"
ELEVATION: 305.21 (ESTABLISHED BY GPS)		
DISTANCES AND DIRECTIONS TO AZIMUTH MARKS		
STATION	GROUND DISTANCE	TRUE AZIMUTH
LUCKSTONE	932.46'	125°15'41"

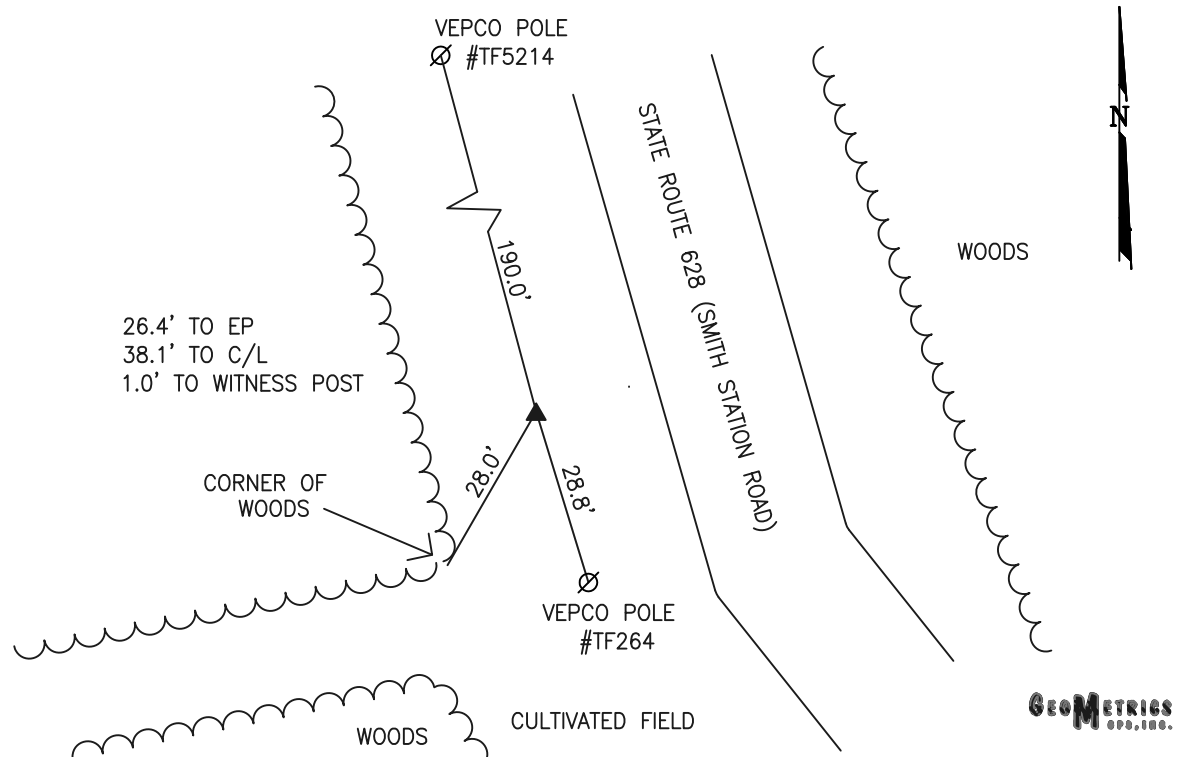
THE STATION IS LOCATED IN SPOTSYLVANIA COUNTY, VIRGINIA APPROXIMATELY 6.5 MILES SOUTHWEST FROM THE CITY OF FREDERICKSBURG.

TO REACH THE STATION FROM THE INTERSECTION OF US HIGHWAY 1 (JEFFERSON DAVIS HIGHWAY) AND STATE ROUTE 208 (COURTHOUSE ROAD) PROCEED SOUTHWEST ALONG STATE ROUTE 208 (COURTHOUSE ROAD) A DISTANCE OF APPROXIMATELY 3.8 MILES TO ITS INTERSECTION WITH STATE ROUTE 628 (SMITH STATION ROAD). TURN LEFT AND PROCEED SOUTHEAST ALONG STATE ROUTE 628 (SMITH STATION ROAD) A DISTANCE OF APPROXIMATELY 1.4 MILES TO THE STATION ON THE RIGHT.

THE STATION IS A 3 1/2 INCH SPOTSYLVANIA COUNTY, VA ALUMINUM SURVEY DISK SET IN A Poured IN PLACE CONCRETE MONUMENT FLUSH WITH THE GROUND SURFACE AND STAMPED LUCKSTONE AZ 2002.

THIS STATION IS INTERVISIBLE WITH STATION LUCKSTONE 2002.

SKETCH:



DRAWN BY: KNT

CHECKED BY: CEN

DATE: 08/2002

APPROX. SCALE: 1" = 30'

GEOMETRICS
S.P.S., INC.