

# SPOTSYLVANIA COUNTY VIRGINIA 2002 CONTROL SURVEY

JN 102-040

HORIZONTAL DATUM: NAD 83(2007) (REVISED 8-08)  
 VERTICAL DATUM: NAVD 88  
 COORDINATE SYSTEM: VIRGINIA STATE PLANE, NORTH ZONE  
 UNITS: U.S. SURVEY FOOT

HORIZONTAL ORDER: FIRST  
 VERTICAL ORDER: THIRD

COUNTY	NAME OF STATION	YEAR
SPOTSYLVANIA	LUCKSTONE	2002
N: 6762406.59	LAT: 38° 12' 50.38013" N	COMBINED FACTOR: 0.99996447
E: 11756826.11	LONG: 77° 32' 47.92561" W	∅ ANGLE: 0° 35' 42.0"
ELEVATION: 285.66 (ESTABLISHED BY GPS)		
DISTANCES AND DIRECTIONS TO AZIMUTH MARKS		
STATION	GROUND DISTANCE	TRUE AZIMUTH
LUCKSTONE AZ	932.46'	305°15'47"

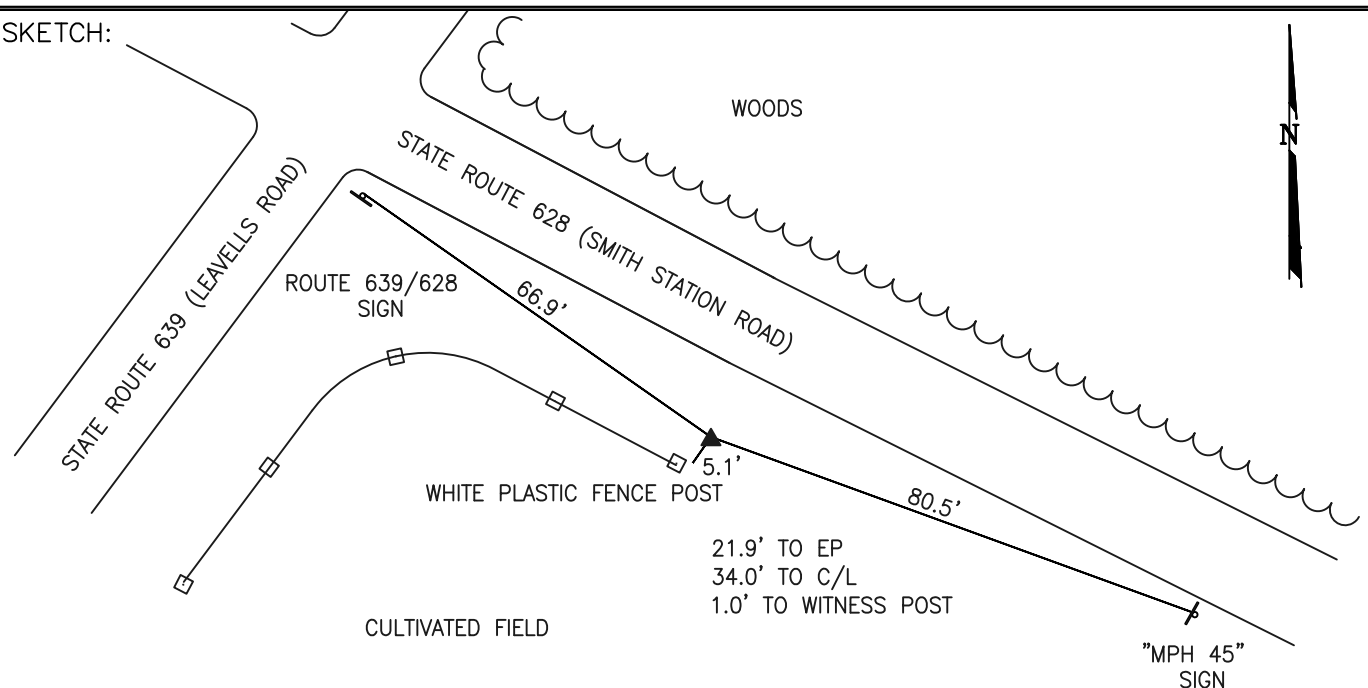
THE STATION IS LOCATED IN SPOTSYLVANIA COUNTY, VIRGINIA APPROXIMATELY 6.5 MILES SOUTHWEST FROM THE CITY OF FREDERICKSBURG.

TO REACH THE STATION FROM THE INTERSECTION OF US HIGHWAY 1 (JEFFERSON DAVIS HIGHWAY) AND STATE ROUTE 208 (COURTHOUSE ROAD) PROCEED SOUTHWEST ALONG STATE ROUTE 208 (COURTHOUSE ROAD) A DISTANCE OF APPROXIMATELY 3.8 MILES TO ITS INTERSECTION WITH STATE ROUTE 628 (SMITH STATION ROAD). TURN LEFT AND PROCEED SOUTHEAST ALONG STATE ROUTE 628 (SMITH STATION ROAD) A DISTANCE OF APPROXIMATELY 1.6 MILES TO THE STATION ON THE RIGHT IN THE SOUTHEAST CORNER OF THE INTERSECTION.

THE STATION IS A 3 1/2 INCH SPOTSYLVANIA COUNTY, VA ALUMINUM SURVEY DISK SET IN A Poured IN PLACE CONCRETE MONUMENT FLUSH WITH THE GROUND SURFACE AND STAMPED LUCKSTONE 2002.

THIS STATION IS INTERVISIBLE WITH STATION LUCKSTONE AZ 2002.

SKETCH:



GEOMETRICS  
S.P.C.

DRAWN BY: KNT

CHECKED BY: CEN

DATE: 08/2002

APPROX. SCALE: 1" = 30'