

**SPOTSYLVANIA COUNTY VIRGINIA
2006 CONTROL SURVEY (RE-ADJUSTED 2008)**

JN 105-138

HORIZONTAL DATUM: NAD 83(2007)
VERTICAL DATUM: NAVD 88
COORDINATE SYSTEM: VIRGINIA STATE PLANE, NORTH ZONE
UNITS: U.S. SURVEY FOOT

HORIZONTAL ORDER: FIRST
VERTICAL ORDER: THIRD

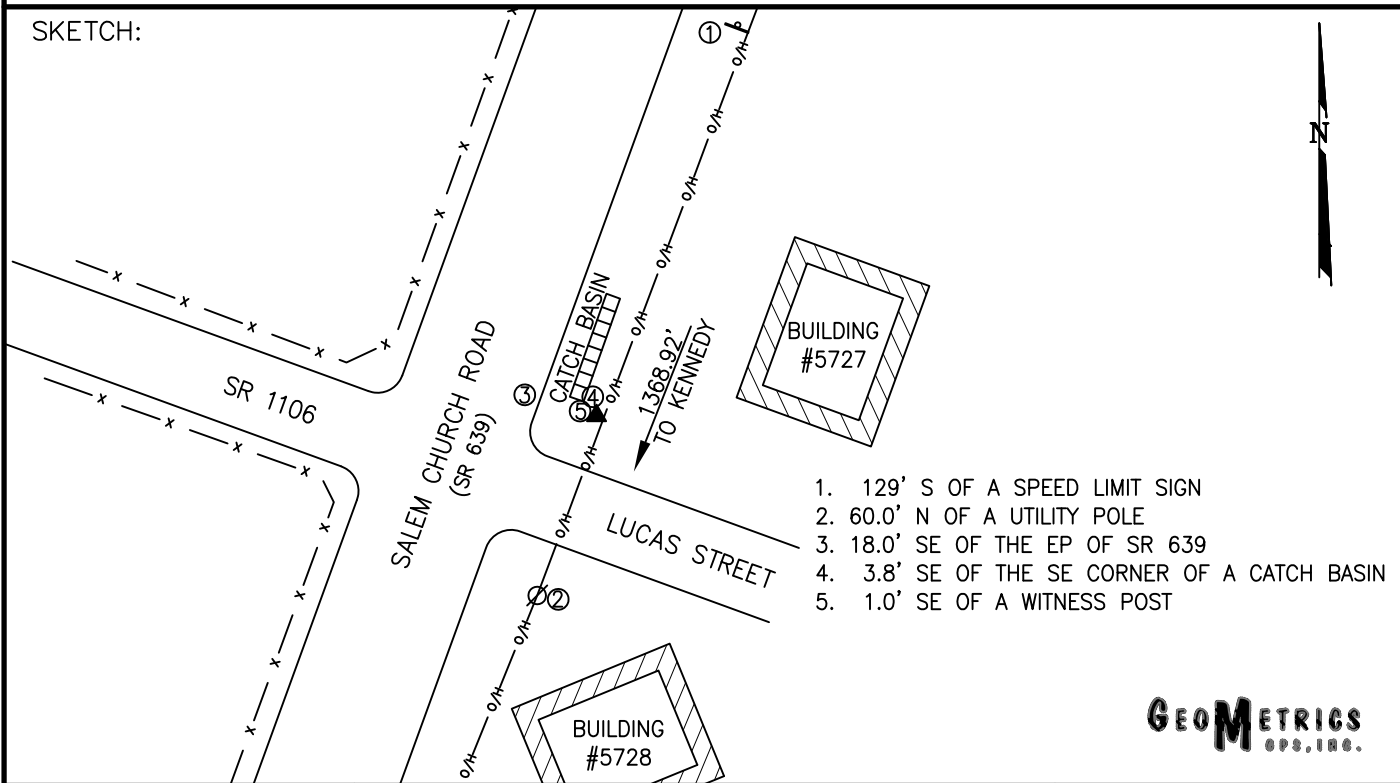
COUNTY	NAME OF STATION	YEAR
SPOTSYLVANIA	LUCAS	2006
N: 6787166.91	LAT: 38° 16' 54.72754" N	COMBINED FACTOR: 0.99996544
E: 11760793.92	LONG: 077° 31' 54.94130" W	⊖ ANGLE: 0° 36' 15.1"
ELEVATION: 311.38' (ESTABLISHED BY GPS)		
DISTANCES AND DIRECTIONS TO AZIMUTH MARKS		
STATION	GROUND DISTANCE	TRUE AZIMUTH
KENNEDY	1368.92'	194°48'43"

THE STATION IS LOCATED ABOUT 10.1 KM (6.3 MILES) NORTHEAST OF SPOTSYLVANIA, AND 6.1 KM (3.8 MILES) SOUTHWEST OF FREDERICKSBURG.

TO REACH THE STATION FROM THE INTERSECTION OF INTERSTATE 95 AND SR 3 (PLANK ROAD) (AT EXIT 130), GO WEST ON SR 3 FOR 2.4 KM (1.5 MILES) TO ITS INTERSECTION WITH SR 639 (SALEM CHURCH ROAD). TURN LEFT AND GO SOUTH ON SR 639 FOR 0.7 KM (0.45 MILE) TO ITS INTERSECTION WITH LUCAS STREET AND THE STATION ON THE LEFT.

THE STATION IS A STANDARD SPOTSYLVANIA COUNTY, VA ALUMINUM SURVEY DISK SET INTO A POURED IN PLACE CONCRETE MONUMENT 10 INCHES IN DIAMETER, FLUSH WITH THE GROUND SURFACE AND STAMPED LUCAS 2006.

SKETCH:



1. 129' S OF A SPEED LIMIT SIGN
2. 60.0' N OF A UTILITY POLE
3. 18.0' SE OF THE EP OF SR 639
4. 3.8' SE OF THE SE CORNER OF A CATCH BASIN
5. 1.0' SE OF A WITNESS POST

GEOMETRICS
GPS, INC.

DRAWN BY: BCL

CHECKED BY: DAR

DATE: 06/2006

APPROX. SCALE: 1" = 60'