

SPOTSYLVANIA COUNTY VIRGINIA 2003 CONTROL SURVEY

JN 103-009

HORIZONTAL DATUM: NAD 83(2007) (REVISED 8-08)
 VERTICAL DATUM: NAVD 88
 COORDINATE SYSTEM: VIRGINIA STATE PLANE, NORTH ZONE
 UNITS: U.S. SURVEY FOOT

HORIZONTAL ORDER: FIRST
 VERTICAL ORDER: THIRD

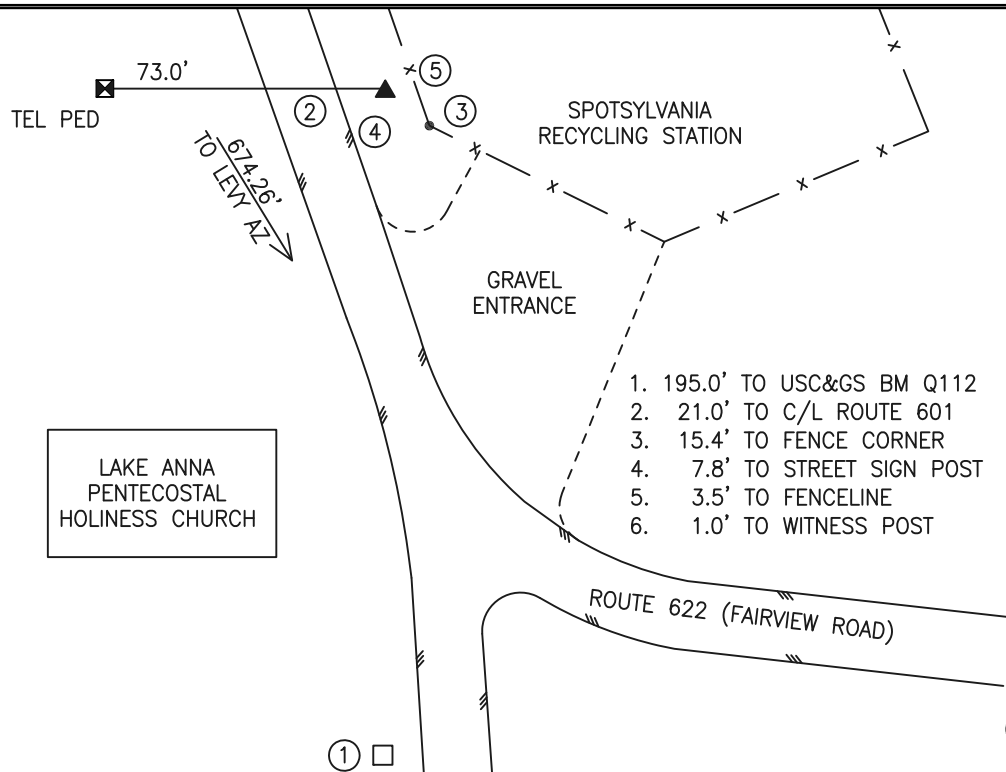
COUNTY	NAME OF STATION	YEAR
SPOTSYLVANIA	LEVY	2003
N: 6697166.18	LAT: 38° 02' 09.76658" N	COMBINED FACTOR: 0.99999017
E: 11711037.49	LONG: 77° 42' 28.67626" W	⊖ ANGLE: 0° 29' 40"
ELEVATION: 301.98' (ESTABLISHED BY LEVELING)		
DISTANCES AND DIRECTIONS TO AZIMUTH MARKS		
STATION	GROUND DISTANCE	TRUE AZIMUTH
LEVY AZ	674.26'	166° 38' 03"

THE STATION IS LOCATED IN SOUTHERN SPOTSYLVANIA COUNTY, VIRGINIA, ABOUT 13 MILES SOUTHWEST OF THE SPOTSYLVANIA COUNTY COURTHOUSE.

TO REACH THE STATION FROM THE INTERSECTION OF STATE ROUTE 606 (MORRIS ROAD) AND US HIGHWAY 1 (JEFFERSON DAVIS HIGHWAY) IN THORNBURG GO WESTERLY ON STATE ROUTE 606 FOR 7.2 KM (4.5 MILES) TO AN INTERSECTION. TURN LEFT AND GO SOUTHWESTERLY ON STATE ROUTE 738 (PARTLOW ROAD) FOR (6.1 KM) 3.8 MILES TO ITS INTERSECTION WITH STATE ROUTE 648 (BLOCKHOUSE ROAD). CONTINUE SOUTHWESTERLY ON STATE ROUTE 738 FOR 8.3 KM (5.2 MILES) TO AN INTERSECTION. TURN RIGHT AND GO SOUTHWESTERLY ON STATE ROUTE 622 (FAIRVIEW ROAD) FOR 4.5 KM (2.8 MILES) TO ITS INTERSECTION WITH STATE ROUTE 601 (LEWISTON ROAD/ARRITT ROAD) AND THE STATION ON THE RIGHT .NEAR A SPOTSYLVANIA TRASH COLLECTION STATION IN THE NORTHEAST CORNER OF THE INTERSECTION AND ACROSS THE STREET FROM THE LAKE ANNA PENTECOSTAL HOLINESS CHURCH.

STATION LEVY IS INTERVISIBLE WITH STATION LEVY AZ. THE STATION IS A 3-1/2 INCH SPOTSYLVANIA COUNTY, VA, ALUMINUM SURVEY DISK SET INTO A POURED IN PLACE CONCRETE MONUMENT 8 INCHES IN DIAMETER FLUSH WITH THE GROUND SURFACE AND STAMPED LEVY 1995.

SKETCH:



GEOMETRICS
OPS, INC.