

# SPOTSYLVANIA COUNTY VIRGINIA 2005 CONTROL SURVEY

JN 104-085

HORIZONTAL DATUM: NAD 83(2007) (REVISED 8-08)  
 VERTICAL DATUM: NAVD 88  
 COORDINATE SYSTEM: VIRGINIA STATE PLANE, NORTH ZONE  
 UNITS: U.S. SURVEY FOOT

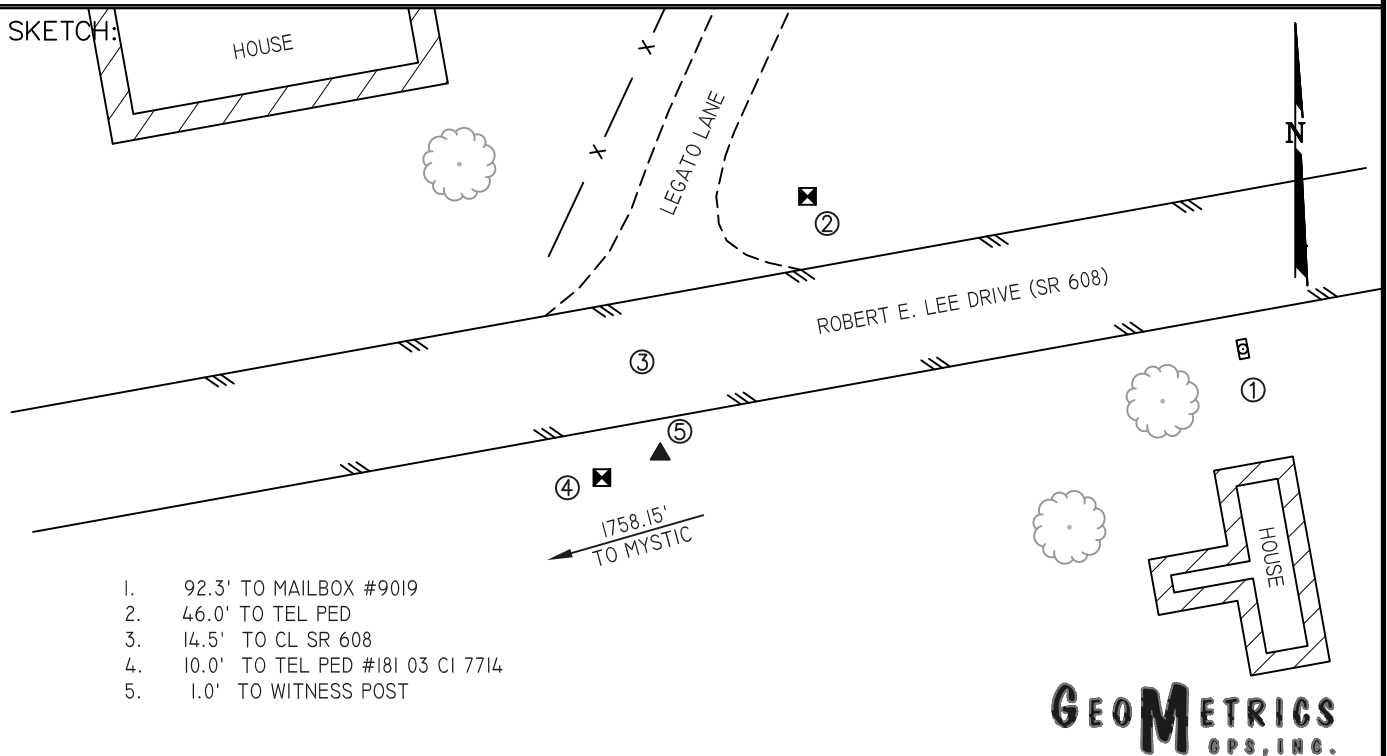
HORIZONTAL ORDER: FIRST  
 VERTICAL ORDER: THIRD

COUNTY	NAME OF STATION	YEAR
SPOTSYLVANIA	LEGATO	2005
N: 6759738.14	LAT: 38° 12' 26.81232" N	COMBINED FACTOR: 0.99997384
E: 11727925.00	LONG: 077° 38' 50.34390" W	⊖ ANGLE: 0° 31' 56"
ELEVATION: 307.25' (ESTABLISHED BY GPS)		
DISTANCES AND DIRECTIONS TO AZIMUTH MARKS		
STATION	GROUND DISTANCE	TRUE AZIMUTH
MYSTIC	1758.15	256°00'37"

THE STATION IS LOCATED IN SPOTSYLVANIA COUNTY, VIRGINIA, APPROXIMATELY 24.1 KM (15.0 MILES) NORTH OF LADYSMITH, AND 5.3 KM (3.3 MILES) WEST OF THE SPOTSYLVANIA COUNTY COURTHOUSE.

TO REACH THE STATION FROM THE INTERSECTION OF SR 208 (COURTHOUSE ROAD) AND SR 613 (BROCK ROAD), AT THE SPOTSYLVANIA COUNTY COURTHOUSE, GO NORTHWEST ON SR 613 FOR 0.8 KM (0.5 MILE) TO ITS INTERSECTION WITH SR 608 (ROBERT E LEE DRIVE). TURN LEFT AND GO SOUTHWEST ON SR 608 FOR 4.7 KM (2.9 MILES) TO ITS INTERSECTION WITH LEGATO LANE. CONTINUE WEST ON SR 608 FOR 0.3 KM (0.2 MILE) TO THE STATION ON THE LEFT.

THE STATION IS A SPOTSYLVANIA COUNTY, VA ALUMINUM SURVEY DISK SET INTO A POURED IN PLACE CONCRETE MONUMENT 10 INCHES IN DIAMETER, FLUSH WITH THE GROUND SURFACE AND STAMPED LEGATO 2005. STATION LEGATO IS INTER-VISIBLE WITH STATION MYSTIC.



1. 92.3' TO MAILBOX #9019
2. 46.0' TO TEL PED
3. 14.5' TO CL SR 608
4. 10.0' TO TEL PED #181 03 CI 7714
5. 1.0' TO WITNESS POST

**GEOMETRICS**  
GPS, INC.

DRAWN BY: BCL

CHECKED BY: DAR

DATE: 06/2005

APPROX. SCALE: 1" = 30'