

**SPOTSYLVANIA COUNTY VIRGINIA
2006 CONTROL SURVEY (RE-ADJUSTED 2008)**

JN 105-138

HORIZONTAL DATUM: NAD 83(2007)
VERTICAL DATUM: NAVD 88
COORDINATE SYSTEM: VIRGINIA STATE PLANE, NORTH ZONE
UNITS: U.S. SURVEY FOOT

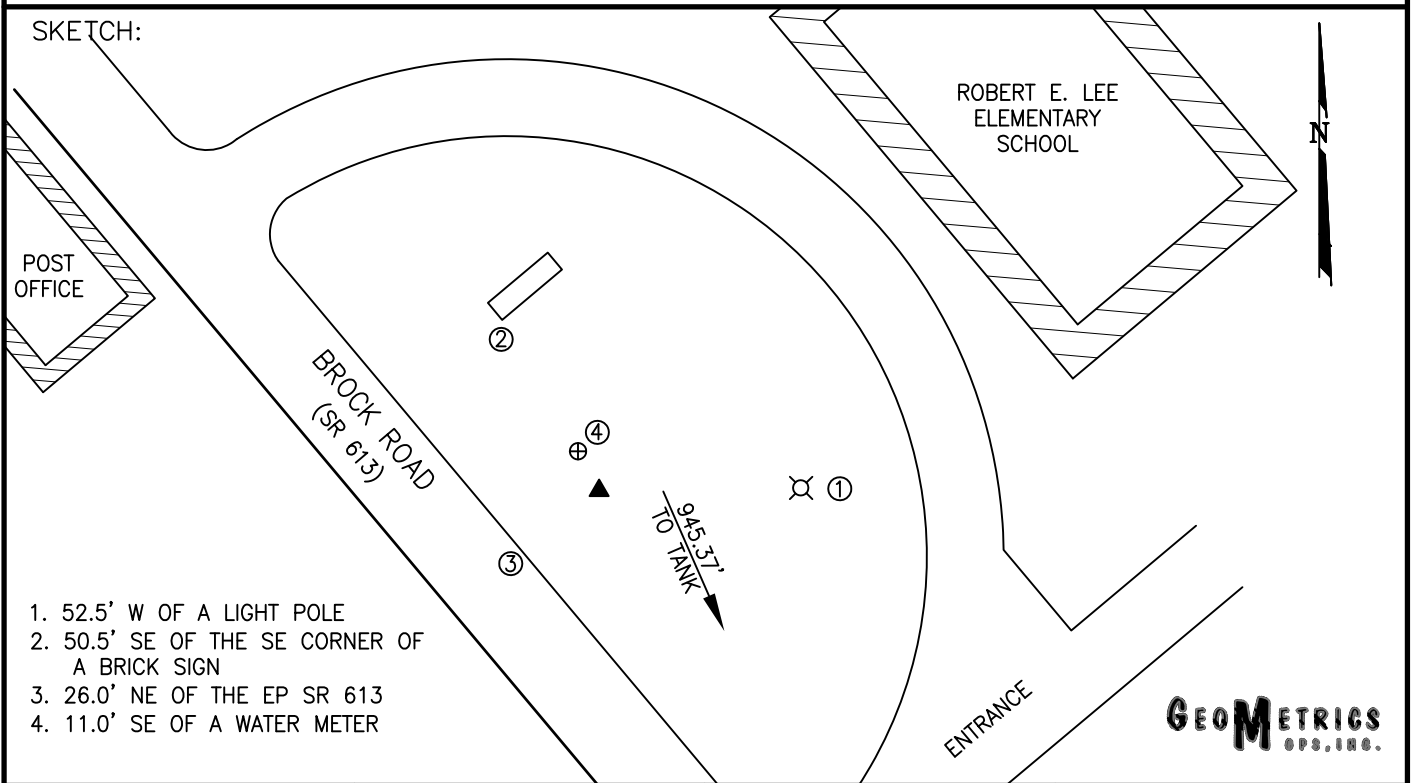
HORIZONTAL ORDER: FIRST
VERTICAL ORDER: THIRD

COUNTY	NAME OF STATION	YEAR
SPOTSYLVANIA	LEE	2006
N: 6758073.90	LAT: 38° 12' 08.82495" N	COMBINED FACTOR: 0.99997446
E: 11744118.74	LONG: 077° 35' 27.67528" W	⊖ ANGLE: 0° 34' 02.3"
ELEVATION: 306.88' (ESTABLISHED BY GPS)		
DISTANCES AND DIRECTIONS TO AZIMUTH MARKS		
STATION	GROUND DISTANCE	TRUE AZIMUTH
TANK	945.37'	162°37'29"

THE STATION IS LOCATED ABOUT 9.0 KM (5.6 MILES) SOUTH OF CHANCELLOR, AND 0.3 KM (0.2 MILE) WEST OF THE SPOTSYLVANIA COURTHOUSE.

TO REACH THE STATION FROM THE INTERSECTION OF SR 613 (BROCK ROAD) AND SR 208 (COURTHOUSE ROAD) AT THE SPOTSYLVANIA COURTHOUSE, GO NORTH ON SR 613 FOR 0.2 KM (0.1 MILE) TO THE STATION ON THE RIGHT IN FRONT OF THE ROBERT E LEE ELEMENTARY SCHOOL.

THE STATION IS A STANDARD SPOTSYLVANIA COUNTY, VA ALUMINUM SURVEY DISK SET INTO A Poured IN PLACE CONCRETE MONUMENT 10 INCHES IN DIAMETER, FLUSH WITH THE GROUND SURFACE AND STAMPED LEE 1995.



DRAWN BY: BCL

CHECKED BY: DAR

DATE: 06/2006

APPROX. SCALE: 1" = 50'