

**SPOTSYLVANIA COUNTY VIRGINIA  
2003 CONTROL SURVEY**

JN 103-009

HORIZONTAL DATUM: NAD 83(2007) (REVISED 8-08)  
 VERTICAL DATUM: NAVD 88  
 COORDINATE SYSTEM: VIRGINIA STATE PLANE, NORTH ZONE  
 UNITS: U.S. SURVEY FOOT

HORIZONTAL ORDER: FIRST  
 VERTICAL ORDER: THIRD

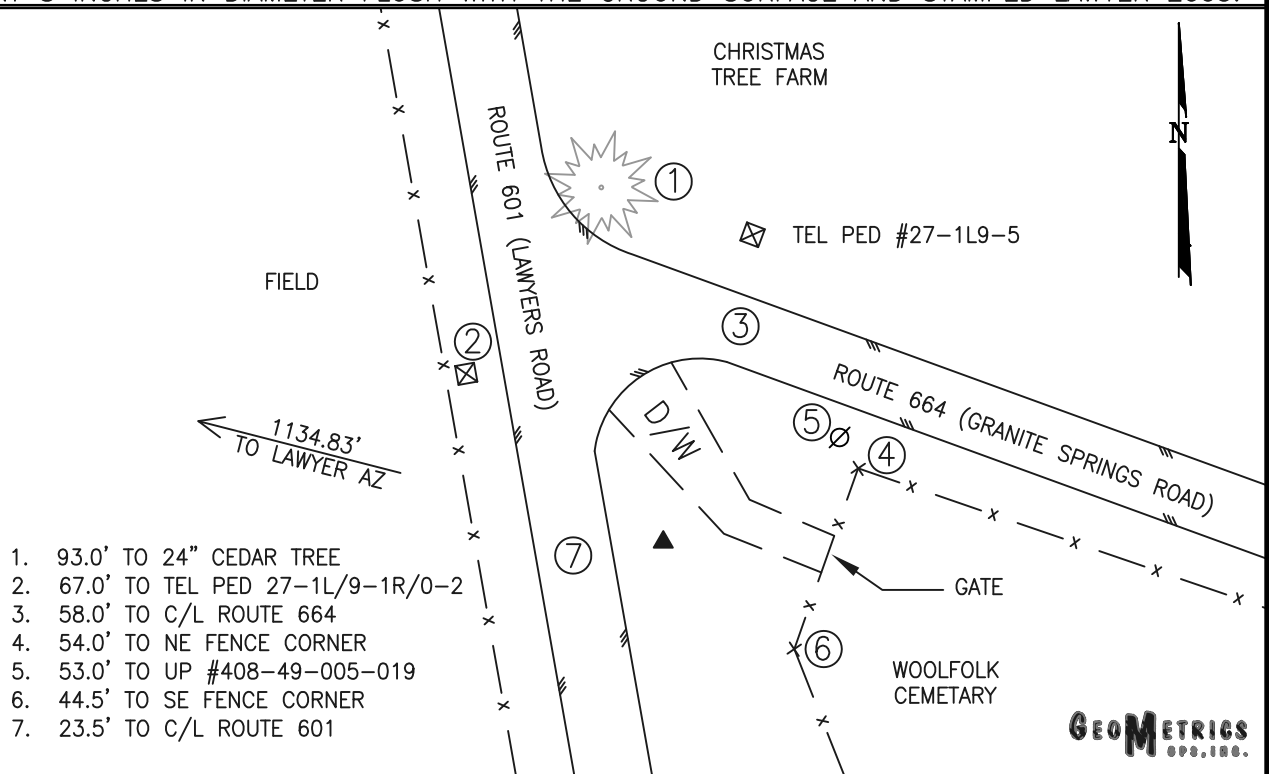
COUNTY	NAME OF STATION	YEAR
SPOTSYLVANIA	LAWYER	2003
N: 6752099.10	LAT: 38° 11' 16.07748" N	COMBINED FACTOR: 0.99996043
E: 11668707.76	LONG: 77° 51' 12.90923" W	⊖ ANGLE: 0° 24' 12"
ELEVATION: 439.03' (ESTABLISHED BY GPS)		
DISTANCES AND DIRECTIONS TO AZIMUTH MARKS		
STATION	GROUND DISTANCE	TRUE AZIMUTH
LAWYER AZ	254° 30' 41"	1134.83'

THE STATION IS LOCATED IN SOUTHWESTERN SPOTSYLVANIA COUNTY, VIRGINIA, ABOUT 14 MILES SOUTHWEST OF THE SPOTSYLVANIA COUNTY COURTHOUSE.

TO REACH THE STATION FROM THE INTERSECTION OF US HIGHWAY 522 (ZACHARY TAYLOR HIGHWAY) AND STATE ROUTE 719 (BELMONT/DAYS BRIDGE ROAD) IN ORANGE COUNTY GO SOUTHEASTERLY ON BELMONT/DAYS BRIDGE ROAD FOR 6.1 KM (3.8 MILES) TO AN INTERSECTION. TURN LEFT AND GO NORTHEASTERLY ON STATE ROUTE 652 (BELMONT ROAD) FOR 1.3 KM (2.0 MILES) TO AN INTERSECTION. TURN RIGHT AND GO SOUTHERLY ON STATE ROUTE 601 (LAWYERS ROAD) FOR 0.2 KM (0.1 MILE) AND THE STATION ON THE LEFT IN THE SOUTHEAST CORNER OF THE INTERSECTION AT THE WOOLFOLK CEMETARY.

STATION LAWYER IS INTERVISIBLE WITH STATION LAWYER AZ. THE STATION IS A 3-1/2 INCH SPOTSYLVANIA COUNTY, VA, ALUMINUM SURVEY DISK SET INTO A Poured IN PLACE CONCRETE MONUMENT 8 INCHES IN DIAMETER FLUSH WITH THE GROUND SURFACE AND STAMPED LAWYER 2003.

SKETCH:



1. 93.0' TO 24" CEDAR TREE
2. 67.0' TO TEL PED 27-1L/9-1R/0-2
3. 58.0' TO C/L ROUTE 664
4. 54.0' TO NE FENCE CORNER
5. 53.0' TO UP #408-49-005-019
6. 44.5' TO SE FENCE CORNER
7. 23.5' TO C/L ROUTE 601

**GEOMETRICS**  
S.P.S., INC.