

**SPOTSYLVANIA COUNTY VIRGINIA
2002/2003 CONTROL SURVEY**

JN 102-080

HORIZONTAL DATUM: NAD 83(2007) (REVISED 8-08)
 VERTICAL DATUM: NAVD 88
 COORDINATE SYSTEM: VIRGINIA STATE PLANE, NORTH ZONE
 UNITS: U.S. SURVEY FOOT

HORIZONTAL ORDER: FIRST
 VERTICAL ORDER: THIRD

COUNTY	NAME OF STATION	YEAR
SPOTSYLVANIA	LAUREL HILL	2002
N: 6799276.85	LAT: 38° 18' 58.70642"N	COMBINED FACTOR: 0.99994906
E: 11716267.88	LONG: 077° 41' 11.99688"W	∅ ANGLE: 0° 30' 27"
ELEVATION: 379.53' (ESTABLISHED BY GPS)		

DISTANCES AND DIRECTIONS TO AZIMUTH MARKS		
STATION	GROUND DISTANCE	TRUE AZIMUTH
LAUREL HILL AZ	2085.64'	132° 04' 45"

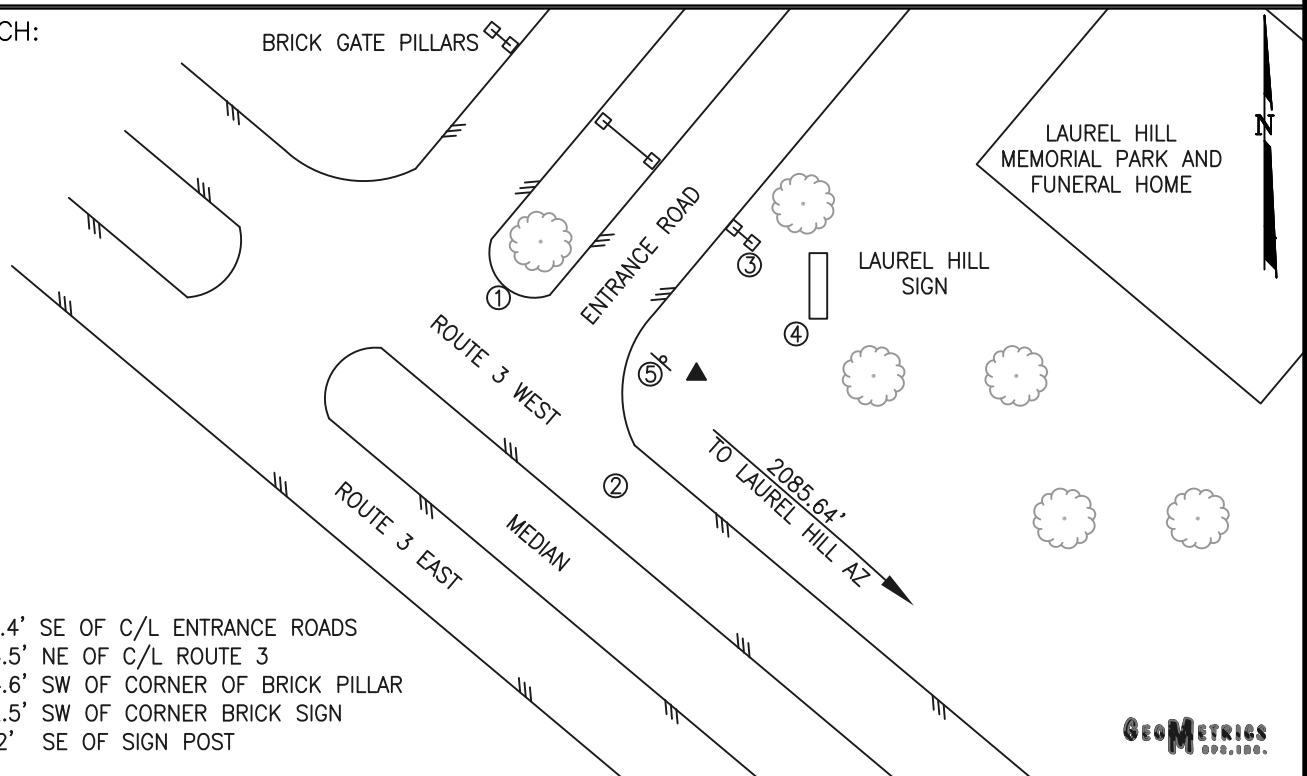
THE STATION IS LOCATED IN NORTHWESTERN SPOTSYLVANIA COUNTY, VIRGINIA, APPROXIMATELY 11 MILES (17.7 KM) NORTHWEST FROM THE CITY OF FREDERICKSBURG.

TO REACH THE STATION FROM THE INTERSECTION OF STATE ROUTE 3 (PLANK ROAD) AND STATE ROUTE 20 (CONSTITUTION HIGHWAY) PROCEED EASTERLY ALONG STATE ROUTE 3 (PLANK ROAD) A DISTANCE OF 2.3 MILES (3.7 KM) TO THE STATION ON THE LEFT IN THE NORTHEAST QUADRANT OF THE DRIVEWAY ENTRANCE TO LAUREL HILL MEMORIAL PARK AND FUNERAL HOME.

THE STATION IS A 3 1/2 INCH SPOTSYLVANIA COUNTY, VIRGINIA ALUMINUM SURVEY DISK, SET IN A Poured IN PLACE CONCRETE MONUMENT, 10 INCHES IN DIAMETER, FLUSH WITH THE GROUND SURFACE AND STAMPED LAUREL HILL 2002.

STATION LAUREL IS INTERVISIBLE WITH STATION LAUREL HILL AZ.

SKETCH:



1. 54.4' SE OF C/L ENTRANCE ROADS
2. 36.5' NE OF C/L ROUTE 3
3. 34.6' SW OF CORNER OF BRICK PILLAR
4. 32.5' SW OF CORNER BRICK SIGN
5. 9.2' SE OF SIGN POST

GEOMETRICS
SURV. INC.

DRAWN BY: BCL	CHECKED BY: DAR	DATE: 02/2003	APPROX. SCALE: 1" = 50'
---------------	-----------------	---------------	-------------------------