

SPOTSYLVANIA COUNTY VIRGINIA 2002/2003 CONTROL SURVEY

JN 102-080

HORIZONTAL DATUM: NAD 83(2007) (REVISED 8-08)
 VERTICAL DATUM: NAVD 88
 COORDINATE SYSTEM: VIRGINIA STATE PLANE, NORTH ZONE
 UNITS: U.S. SURVEY FOOT

HORIZONTAL ORDER: FIRST
 VERTICAL ORDER: THIRD

COUNTY	NAME OF STATION	YEAR
SPOTSYLVANIA	LAPOSAY	2002
N: 6793061.01	LAT: 38° 17' 55.23255"N	COMBINED FACTOR: 0.99995378
E: 11738392.30	LONG: 077° 36' 35.16097"W	⊖ ANGLE: 0° 33' 20"
ELEVATION: 315.64' (ESTABLISHED BY GPS)		

DISTANCES AND DIRECTIONS TO AZIMUTH MARKS

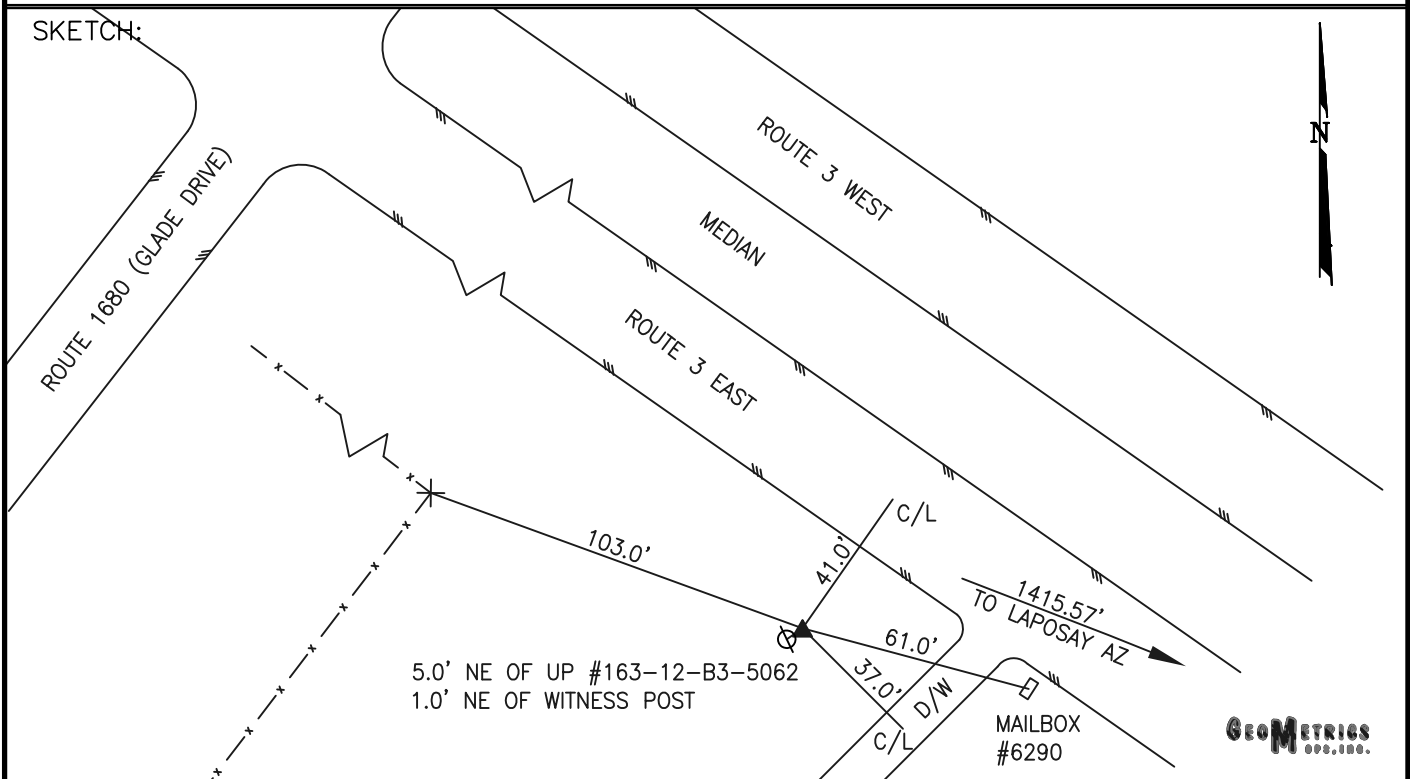
STATION	GROUND DISTANCE	TRUE AZIMUTH
LAPOSAY AZ	1415.57'	111° 53' 48"

THE STATION IS LOCATED IN NORTHWESTERN SPOTSYLVANIA COUNTY, VIRGINIA, APPROXIMATELY 7 MILES (11.2 KM) NORTHWEST FROM THE CITY OF FREDERICKSBURG.

TO REACH THE STATION FROM THE INTERSECTION OF STATE ROUTE 3 (PLANK ROAD) AND STATE ROUTE 610 (OLD PLANK ROAD) PROCEED EASTERLY ALONG STATE ROUTE 3 A DISTANCE OF 1.45 MILES (2.3 KM) TO THE STATION ON THE RIGHT, JUST PAST STATE ROUTE 1680 (GLADE ROAD).

THE STATION IS A 3 1/2 INCH SPOTSYLVANIA COUNTY, VIRGINIA ALUMINUM SURVEY DISK, SET IN A Poured IN PLACE CONCRETE MONUMENT, 10 INCHES IN DIAMETER, FLUSH WITH THE GROUND SURFACE AND STAMPED LAPOSAY 2002.

STATION LAPOSAY IS INTERVISIBLE WITH STATION LAPOSAY AZ.



DRAWN BY: BCL	CHECKED BY: DAR	DATE: 02/2003	APPROX. SCALE: 1" = 50'
---------------	-----------------	---------------	-------------------------