

SPOTSYLVANIA COUNTY, VA
 GEODETIC SURVEY CONTROL (REVISED 8-08)

JN 100058

MAP PROJECTION: LAMBERT

HORIZONTAL ORDER: FIRST

NAD 83(2007) * VIRGINIA STATE PLANE COORDINATE SYSTEM * NORTH ZONE * U.S. SURVEY FOOT

COUNTY	NAME OF STATION	YEAR
SPOTSYLVANIA	LANDING	2001

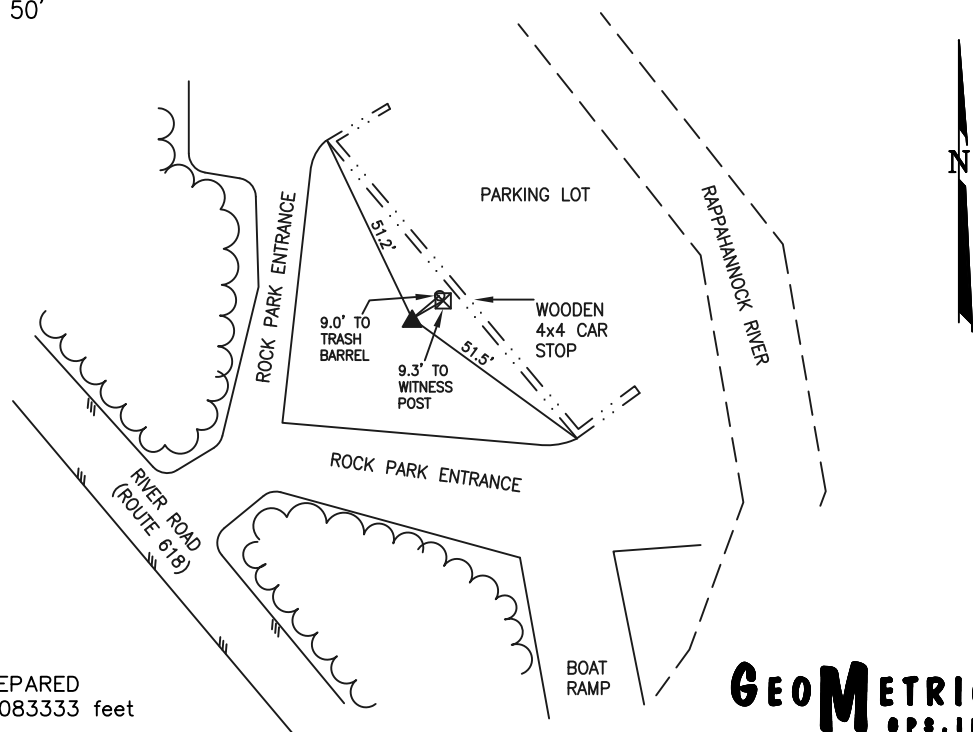
N: 6798729.28	E: 11758002.85	LAT: 38°18'49.31162"	LONG: 077°32'28.42915"
GRID FACTOR: 0.99996236	COMBINED FACTOR: 0.99995851	⊕ ANGLE: 0°35'54.2"	

ESTABLISHED BY: GeoMetrics GPS, INC.	DISTANCES AND DIRECTIONS TO REFERENCE MARKS AND PROMINENT OBJECTS OBSERVED AT STATION		
	OBJECT	GROUND DISTANCE	TRUE AZIMUTH
VERTICAL DATUM NAVD 88	(SEE SKETCH BELOW)		
ELEVATION (FT.) 80.58			
VERTICAL ORDER: THIRD			

TO REACH:

THE STATION IS LOCATED IN NORTHERN SPOTSYLVANIA COUNTY, VIRGINIA AT THE MOTTS RUN BOAT LANDING. TO REACH THE STATION FROM THE INTERSECTION I-95 AND PLANK ROAD (ROUTE 3) PROCEED WEST ALONG PLANK ROAD (ROUTE 3) A DISTANCE OF 0.8 MILE TO ITS INTERSECTION WITH BRAGG ROAD (ROUTE 639). TURN RIGHT AND PROCEED NORTH ALONG BRAGG ROAD (ROUTE 639) A DISTANCE OF 0.9 MILE TO ITS INTERSECTION WITH RIVER ROAD (ROUTE 618). TURN LEFT AND PROCEED WEST ALONG RIVER ROAD (ROUTE 618) A DISTANCE OF 1.6 MILES TO ITS INTERSECTION WITH A GRAVEL DRIVEWAY FOR THE MOTTS RUN BOAT LANDING. TURN RIGHT AND PROCEED NORTH ALONG THE GRAVEL DRIVEWAY APPROXIMATELY 50 FEET AND THE STATION ON THE LEFT.

SKETCH OF STATION:
 APPROX. SCALE: 1" = 50'



THIS SURVEY DATA PREPARED
 USING 1 meter = 3.28083333 feet

PREPARED BY: BCL	5/01
CHECKED BY: LLR	8/01

GEOMETRICS
 GPS, INC.

236 CAMBRIDGE STREET
 FREDERICKSBURG, VIRGINIA
 (540) 372-3499