

SPOTSYLVANIA COUNTY, VIRGINIA  
E911 GPS SURVEY REVISED 10/2008

W.O. 95007

MAP PROJECTION: LAMBERT

ORDER OF SURVEY: FIRST

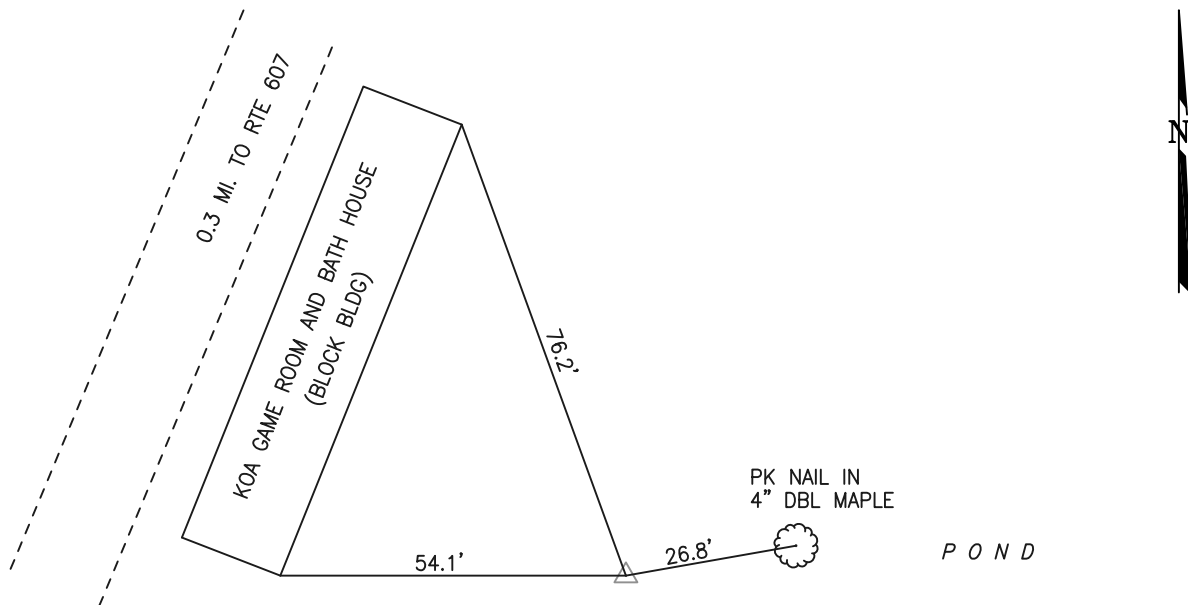
NAD 83(2007) \* VIRGINIA STATE PLANE COORDINATE SYSTEM \* NORTH ZONE

COUNTY		NAME OF STATION		YEAR
SPOTSYLVANIA		KOA		1995
N: 6744641.45	E: 11777189.22	LAT.: 38° 09' 52.60278"N	LONG.: 77° 28' 35.27884"W	
GRID FACTOR: 0.99997943	SEA LEVEL FACTOR: 0.99999821		ϕ ANGLE: +0° 38' 19.70"	
ESTABLISHED BY: GeoMetrics GPS, INC.	YEAR 1995	DISTANCES AND DIRECTIONS TO REFERENCE MARKS AND PROMINENT OBJECTS OBSERVED AT STATION		
		OBJECT	DISTANCE-FT.	MAG. AZIMUTH
VERTICAL DATUM NAVD 88				
ELEVATION (FT.) 143.55				
RECOVERED: NOV 2000				

DESCRIPTION OF STATION:

The station is a Spotsylvania County survey disk set in concrete stamped KOA 1995 located in Spotsylvania County, Virginia, approximately 3.5 miles northeast of Thornburg. To reach the station from the intersection of US Route 1 (Jefferson Davis Highway) and Route 17 Bypass (Mills Drive) proceed south along Route 1 (Jefferson Davis Highway) 3.1 miles to its intersection with Route 607 (Guinea Station Road). Turn left and proceed southeast along Route 607 (Guinea Station Road) 2.4 miles to its intersection with the KOA Campground. Turn right and proceed south along paved road 0.3 miles to the game room and the station is behind the game room. Witness post set N84°E at 26.8 feet.

SKETCH OF STATION:



THIS SURVEY DATA PREPARED  
USING 1 meter = 3.280833 feet

**GEOMETRICS**  
GPS, INC.

236 CAMBRIDGE ROAD  
FREDERICKSBURG, VIRGINIA  
(540) 372-3499

PREPARED BY: EJP	DATE: AUG '95
CHECKED BY: DAR	DATE: AUG '95

**NOTE:**  
IN 2008 THE COORDINATES WERE CONVERTED TO  
NAD83(2007) BY APPLYING A COMPUTED SHIFT