

**SPOTSYLVANIA COUNTY VIRGINIA
2006 CONTROL SURVEY (RE-ADJUSTED 2008)**

JN 105-138

HORIZONTAL DATUM: NAD 83(2007)
VERTICAL DATUM: NAVD 88
COORDINATE SYSTEM: VIRGINIA STATE PLANE, NORTH ZONE
UNITS: U.S. SURVEY FOOT

HORIZONTAL ORDER: FIRST
VERTICAL ORDER: THIRD

COUNTY	NAME OF STATION	YEAR
SPOTSYLVANIA	KENNEDY	2006
N: 6785839.93	LAT: 38° 16' 41.64520" N	COMBINED FACTOR: 0.99996581
E: 11760457.95	LONG: 077° 31' 59.32999" W	⊖ ANGLE: 0° 36' 12.4"
ELEVATION: 293.90' (ESTABLISHED BY GPS)		
DISTANCES AND DIRECTIONS TO AZIMUTH MARKS		
STATION	GROUND DISTANCE	TRUE AZIMUTH
LUCAS	1368.92'	14°48'41"

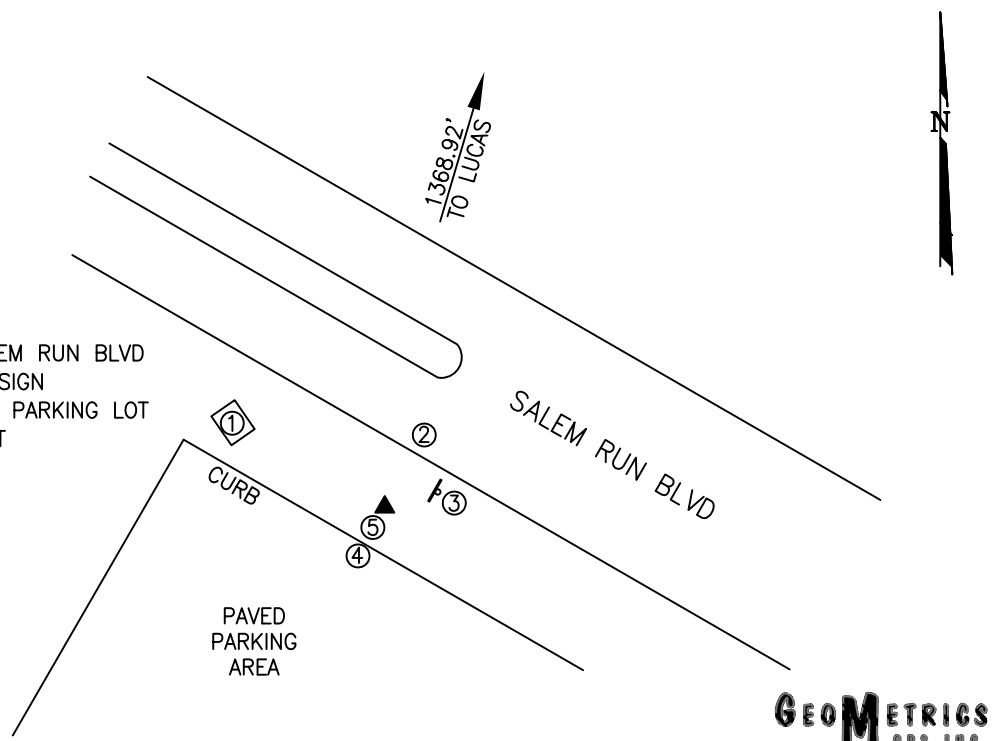
THE STATION IS LOCATED ABOUT 10.1 KM (6.3 MILES) NORTHEAST OF SPOTSYLVANIA, AND 6.1 KM (3.8 MILES) SOUTHWEST OF FREDERICKSBURG.

TO REACH THE STATION FROM THE INTERSECTION OF INTERSTATE 95 AND SR 3 (PLANK ROAD) (AT EXIT 130), GO WEST ON SR 3 FOR 2.4 KM (1.5 MILES) TO ITS INTERSECTION WITH SR 639 (SALEM CHURCH ROAD). TURN LEFT AND GO SOUTH ON SR 639 FOR 1.3 KM (0.80 MILE) TO ITS INTERSECTION WITH SALEM RUN BOULEVARD. TURN LEFT AND GO EAST ON SALEM RUN BOULEVARD FOR 33.5 METERS (110 FEET) TO THE STATION ON THE RIGHT.

THE STATION IS A STANDARD SPOTSYLVANIA COUNTY, VA ALUMINUM SURVEY DISK SET INTO A Poured IN PLACE CONCRETE MONUMENT 10 INCHES IN DIAMETER, FLUSH WITH THE GROUND SURFACE AND STAMPED KENNEDY 2006.

SKETCH:

1. 39.1' SE OF A TRAFFIC BOX
2. 15.5' SE OF THE EP OF SALEM RUN BLVD
3. 14.2' SW OF A SPEED LIMIT SIGN
4. 11.6' NE OF THE EP OF THE PARKING LOT
5. 1.0' NE OF A WITNESS POST



GEOMETRICS
GPS, INC.