

SPOTSYLVANIA COUNTY VIRGINIA 2002 CONTROL SURVEY

JN 102-040

HORIZONTAL DATUM: NAD 83(2007) (REVISED 8-08)
 VERTICAL DATUM: NAVD 88
 COORDINATE SYSTEM: VIRGINIA STATE PLANE, NORTH ZONE
 UNITS: U.S. SURVEY FOOT

HORIZONTAL ORDER: FIRST
 VERTICAL ORDER: THIRD

COUNTY	NAME OF STATION	YEAR
SPOTSYLVANIA	KAESER	2002
N: 6782526.80	LAT: 38° 16' 06.69356" N	COMBINED FACTOR: 0.99996802
E: 11780853.32	LONG: 77° 27' 44.04050" W	∅ ANGLE: 0° 38' 51.7"
ELEVATION: 81.54 (ESTABLISHED BY GPS)		
DISTANCES AND DIRECTIONS TO AZIMUTH MARKS		
STATION	GROUND DISTANCE	TRUE AZIMUTH
CVS	1741.40'	29°16'45"

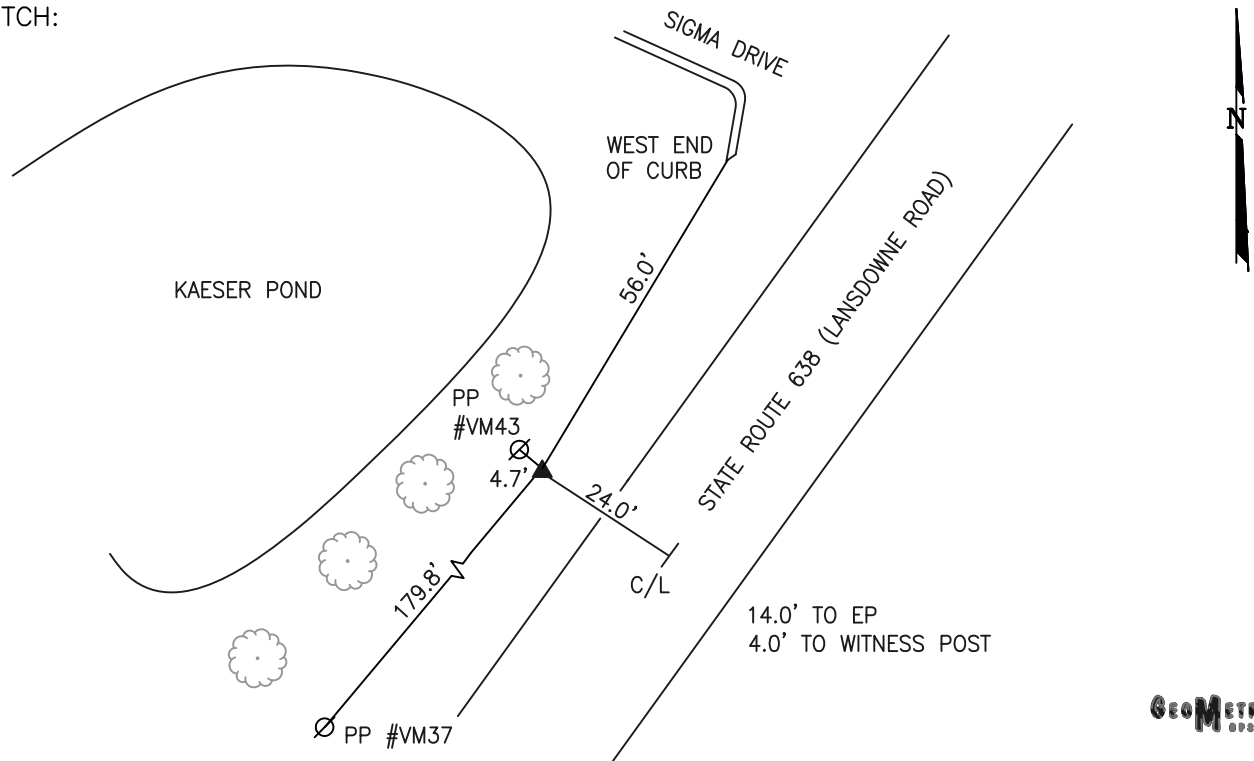
THE STATION IS LOCATED IN SPOTSYLVANIA COUNTY, VIRGINIA APPROXIMATELY 1.5 MILES SOUTH FROM THE CITY OF FREDERICKSBURG.

TO REACH THE STATION FROM THE POST OFFICE AT 600 PRINCESS ANNE STREET IN THE CITY OF FREDERICKSBURG, PROCEED SOUTHEAST ALONG PRINCESS ANNE STREET 0.3 MILE TO ITS INTERSECTION WITH DIXON STREET. TURN RIGHT AND PROCEED SOUTHWEST ALONG DIXON STREET A DISTANCE OF 0.05 MILE TO ITS INTERSECTION WITH STATE ROUTE 2. TURN LEFT AND PROCEED SOUTH ALONG STATE ROUTE 2 A DISTANCE OF 1.2 MILES TO ITS INTERSECTION WITH STATE ROUTE 638 (LANSDOWNE ROAD). TURN RIGHT AND PROCEED A DISTANCE OF 0.8 MILE ITS INTERSECTION WITH SIGMA DRIVE AND THE STATION ON THE RIGHT IN THE SOUTHWEST CORNER OF THE INTERSECTION NEAR KAESER POND.

THE STATION IS A 3 1/2 INCH SPOTSYLVANIA COUNTY, VA ALUMINUM SURVEY DISK SET IN A POURED IN PLACE CONCRETE MONUMENT FLUSH WITH THE GROUND SURFACE AND STAMPED KAESER 2002.

THIS STATION IS INTERVISIBLE WITH STATION CVS 2002.

SKETCH:



GEOMETRICS
SPE. INC.

DRAWN BY: KNT

CHECKED BY: CEN

DATE: 07/2002

APPROX. SCALE: 1" = 30'