

**SPOTSYLVANIA COUNTY VIRGINIA  
2002/2003 CONTROL SURVEY**

JN 102-080

HORIZONTAL DATUM: NAD 83(2007) (REVISED 8-08)  
 VERTICAL DATUM: NAVD 88  
 COORDINATE SYSTEM: VIRGINIA STATE PLANE, NORTH ZONE  
 UNITS: U.S. SURVEY FOOT

HORIZONTAL ORDER: FIRST  
 VERTICAL ORDER: THIRD

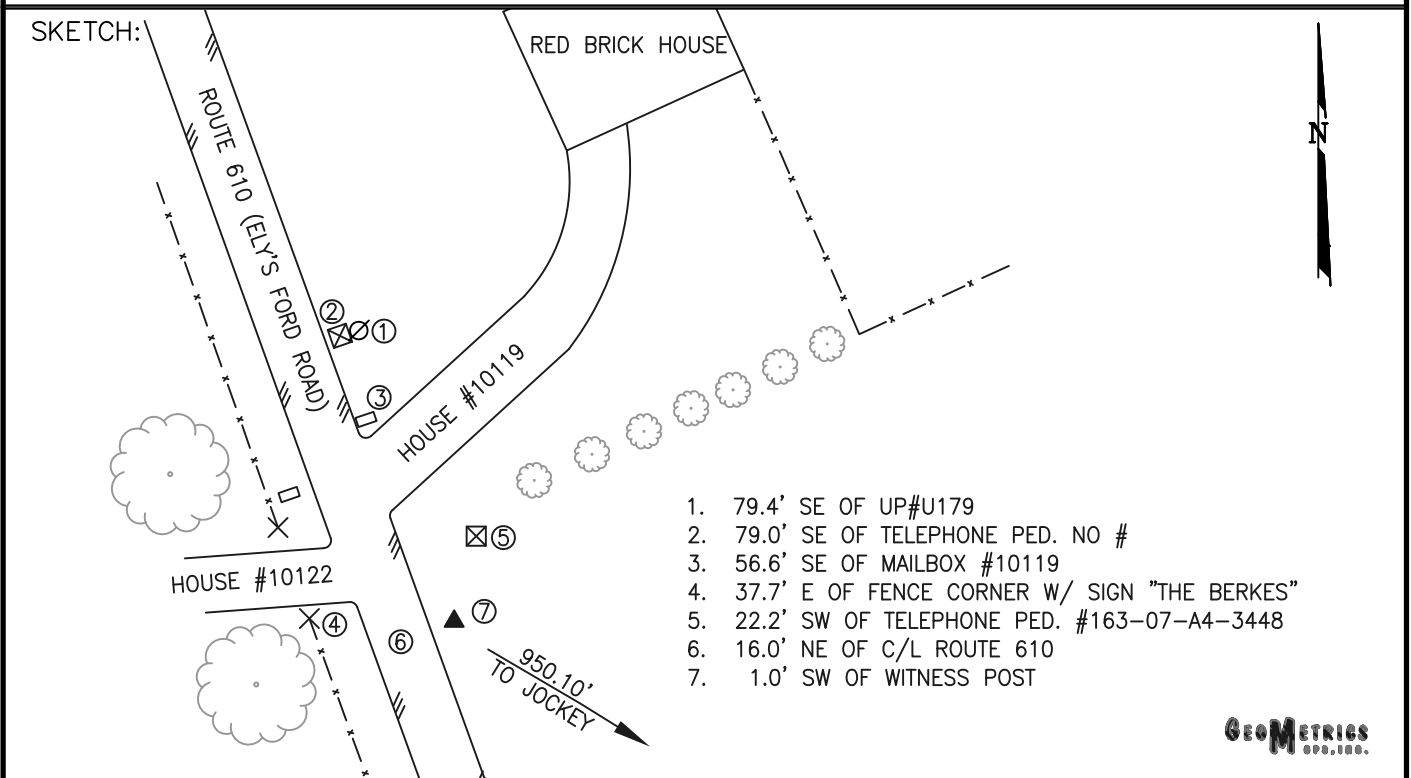
COUNTY	NAME OF STATION	YEAR
SPOTSYLVANIA	JOCKEY AZ	2002
N: 6810005.44	LAT: 38° 20' 44.39296"N	COMBINED FACTOR: 0.99994748
E: 11720424.96	LONG: 077° 40' 18.62382"W	⊖ ANGLE: 0° 31' 01"
ELEVATION: 359.40' (ESTABLISHED BY LEVELS)		
DISTANCES AND DIRECTIONS TO AZIMUTH MARKS		
STATION	GROUND DISTANCE	TRUE AZIMUTH
JOCKEY	950.10'	121° 46' 10"

THE STATION IS LOCATED IN NORTHWESTERN SPOTSYLVANIA COUNTY, VIRGINIA APPROXIMATELY 10.5 MILES (16.9 KM) NORTHWEST OF THE CITY OF FREDERICKSBURG.

TO REACH THE STATION FROM THE INTERSECTION OF STATE ROUTE 3 (PLANK ROAD) AND STATE ROUTE 610 (ELYS FORD ROAD) AT CHANCELLORSVILLE, PROCEED NORTHWESTERLY ALONG STATE ROUTE 610 (ELYS FORD ROAD) A DISTANCE OF 3.45 MILES (5.6 KM) AND THE STATION ON THE RIGHT.

THE STATION IS A 3 1/2 INCH SPOTSYLVANIA COUNTY, VIRGINIA ALUMINUM SURVEY DISK SET IN A POURED IN PLACE CONCRETE MONUMENT 10 INCHES IN DIAMETER FLUSH WITH THE GROUND SURFACE AND STAMPED JOCKEY AZ 2002.

STATION JOCKEY AZ IS INTERVISIBLE WITH STATION JOCKEY.



GEOMETRICS  
S.P.S. INC.

DRAWN BY: BCL	CHECKED BY: DAR	DATE: 02/2003	APPROX. SCALE: 1" = 50'
---------------	-----------------	---------------	-------------------------