

SPOTSYLVANIA COUNTY VIRGINIA 2002/2003 CONTROL SURVEY

JN 102-080

HORIZONTAL DATUM: NAD 83(2007) (REVISED 8-08)
 VERTICAL DATUM: NAVD 88
 COORDINATE SYSTEM: VIRGINIA STATE PLANE, NORTH ZONE
 UNITS: U.S. SURVEY FOOT

HORIZONTAL ORDER: FIRST
 VERTICAL ORDER: THIRD

COUNTY	NAME OF STATION	YEAR
SPOTSYLVANIA	JOCKEY	1995
N: 6809512.54	LAT: 38° 20' 39.44805"N	COMBINED FACTOR: 0.99994750
E: 11721237.15	LONG: 077° 40' 08.48527"W	⊖ ANGLE: 0° 31' 07"
ELEVATION: 361.21' (ESTABLISHED BY LEVELS)		
DISTANCES AND DIRECTIONS TO AZIMUTH MARKS		
STATION	GROUND DISTANCE	TRUE AZIMUTH
JOCKEY AZ	950.10'	301° 46' 17"

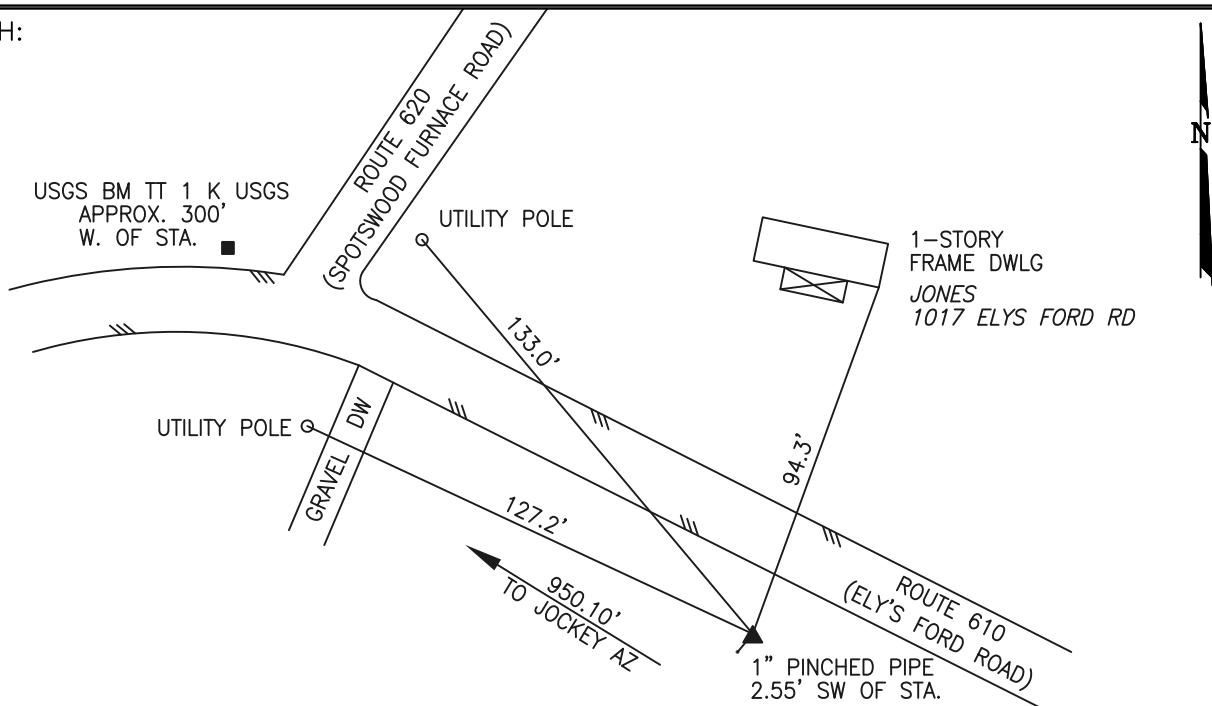
THE STATION IS LOCATED IN NORTHWESTERN SPOTSYLVANIA COUNTY, VIRGINIA APPROXIMATELY 10.5 MILES (16.9 KM) NORTHWEST FROM THE CITY OF FREDERICKSBURG.

TO REACH THE STATION FROM THE INTERSECTION OF STATE ROUTE 3 (PLANK ROAD) AND STATE ROUTE 610 (ELYS FORD ROAD) AT CHANCELLORSVILLE, PROCEED NORTHWESTERLY ALONG STATE ROUTE 610 (ELYS FORD ROAD) A DISTANCE OF 3.25 MILES (5.2 KM) AND THE STATION ON THE LEFT.

THE STATION IS A 3 1/2 INCH SPOTSYLVANIA COUNTY, VIRGINIA ALUMINUM SURVEY DISK SET IN A POURED IN PLACE CONCRETE MONUMENT 10 INCHES IN DIAMETER FLUSH WITH THE GROUND SURFACE AND STAMPED JOCKEY 1995.

STATION JOCKEY IS INTERVISIBLE WITH STATION JOCKEY AZ.

SKETCH:



GEOMETRICS
SPE., INC.

DRAWN BY: BCL

CHECKED BY: DAR

DATE: 02/2003

APPROX. SCALE: 1" = 50'