

**SPOTSYLVANIA COUNTY VIRGINIA  
2006 CONTROL SURVEY (RE-ADJUSTED 2008)**

JN 105-138

HORIZONTAL DATUM: NAD 83(2007)  
VERTICAL DATUM: NAVD 88  
COORDINATE SYSTEM: VIRGINIA STATE PLANE, NORTH ZONE  
UNITS: U.S. SURVEY FOOT

HORIZONTAL ORDER: FIRST  
VERTICAL ORDER: THIRD

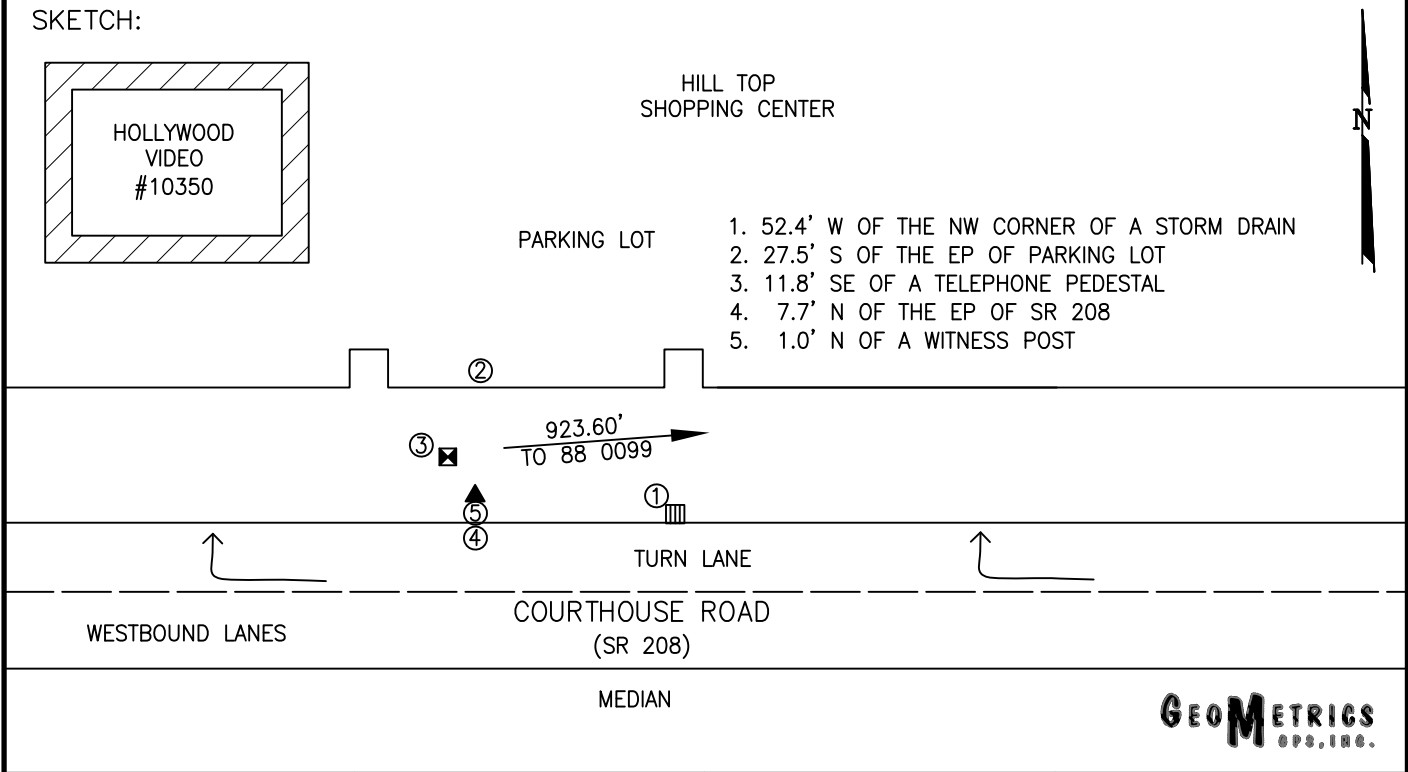
COUNTY	NAME OF STATION	YEAR
SPOTSYLVANIA	HILLTOP	2006
N: 6773341.20	LAT: 38° 14' 37.95730" N	COMBINED FACTOR: 0.99996952
E: 11761772.65	LONG: 077° 31' 44.50121" W	⊖ ANGLE: 0° 36' 21.6"
ELEVATION: 263.34' (ESTABLISHED BY GPS)		
DISTANCES AND DIRECTIONS TO AZIMUTH MARKS		
STATION	GROUND DISTANCE	TRUE AZIMUTH
88 0099	923.60'	72°15'14"

THE STATION IS LOCATED ABOUT 7.1 KM (4.4 MILES) NORTHEAST OF SPOTSYLVANIA, AND 4.8 KM (3.0 MILES) SOUTHWEST OF FREDERICKSBURG.

TO REACH THE STATION FROM THE INTERSECTION OF US HIGHWAY 1 (JEFFERSON DAVIS HIGHWAY) AND INTERSTATE 95 (EXIT 126), GO NORTH ON US HIGHWAY 1 FOR 1.6 KM (1.0 MILE) TO ITS INTERSECTION WITH SR 208 (COURTHOUSE ROAD). TURN LEFT AND GO WEST ON SR 208 FOR 2.7 KM (1.7 MILES) TO ITS INTERSECTION WITH SR 639 (LEAVELLS ROAD). CONTINUE WEST ON SR 208 FOR 0.4 KM (0.25 MILE) TO THE STATION ON THE RIGHT IN THE HILLTOP SHOPPING CENTER IN FRONT OF THE GIANT FOOD GROCERY STORE.

THE STATION IS A STANDARD SPOTSYLVANIA COUNTY, VA ALUMINUM SURVEY DISK SET INTO A POURED IN PLACE CONCRETE MONUMENT 10 INCHES IN DIAMETER, FLUSH WITH THE GROUND SURFACE AND STAMPED HILLTOP 2006.

SKETCH:



DRAWN BY: BCL	CHECKED BY: DAR	DATE: 06/2006	APPROX. SCALE: 1" = 50'
---------------	-----------------	---------------	-------------------------