

**SPOTSYLVANIA COUNTY VIRGINIA
2007 GEODETIC CONTROL SURVEY**

JN 107-065

HORIZONTAL DATUM: NAD 83(2007)
 VERTICAL DATUM: NAVD 88
 COORDINATE SYSTEM: VIRGINIA STATE PLANE, NORTH ZONE
 UNITS: U.S. SURVEY FOOT

HORIZONTAL ORDER: FIRST
 VERTICAL ORDER: THIRD

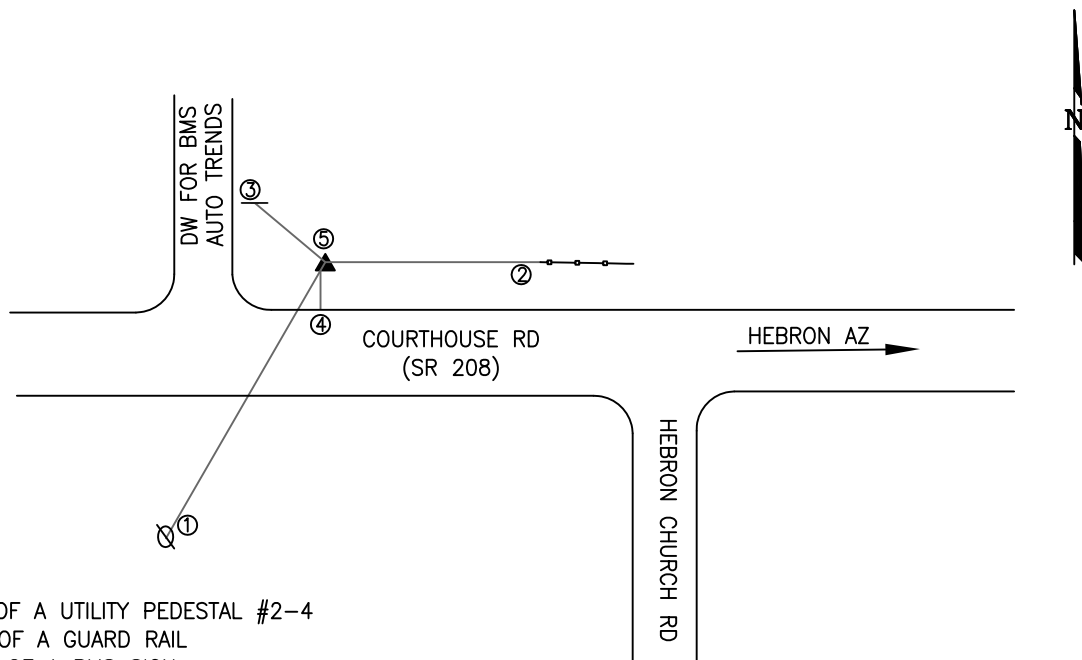
COUNTY	NAME OF STATION	YEAR
SPOTSYLVANIA	HEBRON	2007
N: 6737780.19	LAT: 38° 08' 51.37818" N	COMBINED FACTOR: 0.99996820
E: 11709516.62	LONG: 77° 42' 43.32787" W	⊖ ANGLE: 0° 29' 30"
ELEVATION: 390.94' (ESTABLISHED BY GPS)		
DISTANCES AND DIRECTIONS TO AZIMUTH MARKS		
STATION	GROUND DISTANCE	TRUE AZIMUTH
HEBRON AZ	1194.62	82° 40' 53"

THE STATION IS LOCATED ABOUT 19.3 KM (12.0 MILES) SOUTH OF LOCUST GROVE, AND 12.2 KM (7.6 MILES) SOUTHWEST OF SPOTSYLVANIA

TO REACH THE STATION FROM THE INTERSECTION OF SR 208 (COURTHOUSE ROAD) AND SR 613 (BROCK ROAD), AT THE SPOTSYLVANIA COURTHOUSE, GO NORTH ON SR 613 FOR 0.8 KM (0.5 MILE) TO ITS INTERSECTION WITH SR 608 (ROBERT E LEE DRIVE). TURN LEFT AND GO SOUTH ON SR 648 (BLOCKHOUSE ROAD) FOR 4.7 KM (2.9 MILES) TO ITS INTERSECTION WITH SR 208 (COURTHOUSE ROAD). TURN RIGHT AND GO WEST ON SR 208 FOR 6.9 KM (4.3 MILES) TO THE STATION ON THE RIGHT ACROSS FROM THE HEBRON BAPTIST CHURCH.

THE STATION IS A STANDARD SPOTSYLVANIA COUNTY, VA ALUMINUM SURVEY DISK SET INTO A POURED IN PLACE CONCRETE MONUMENT 10 INCHES IN DIAMETER, FLUSH WITH GROUND SURFACE AND STAMPED HEBRON 2007.

SKETCH:



1. 83.0' N OF A UTILITY PEDESTAL #2-4
2. 56.0' W OF A GUARD RAIL
3. 24.0' SE OF A BMS SIGN
4. 10.0' N OF THE EP OF SR 208
5. 1.0' NE OF A WITNESS POST

GEO METRICS
GPS, INC.

DRAWN BY: KLS

CHECKED BY: DAR

DATE: 06/2008

APPROX. SCALE: 1" = 50'