

**SPOTSYLVANIA COUNTY VIRGINIA  
2003 CONTROL SURVEY**

JN 103-009

HORIZONTAL DATUM: NAD 83(2007) (REVISED 8-08)  
 VERTICAL DATUM: NAVD 88  
 COORDINATE SYSTEM: VIRGINIA STATE PLANE, NORTH ZONE  
 UNITS: U.S. SURVEY FOOT

HORIZONTAL ORDER: FIRST  
 VERTICAL ORDER: THIRD

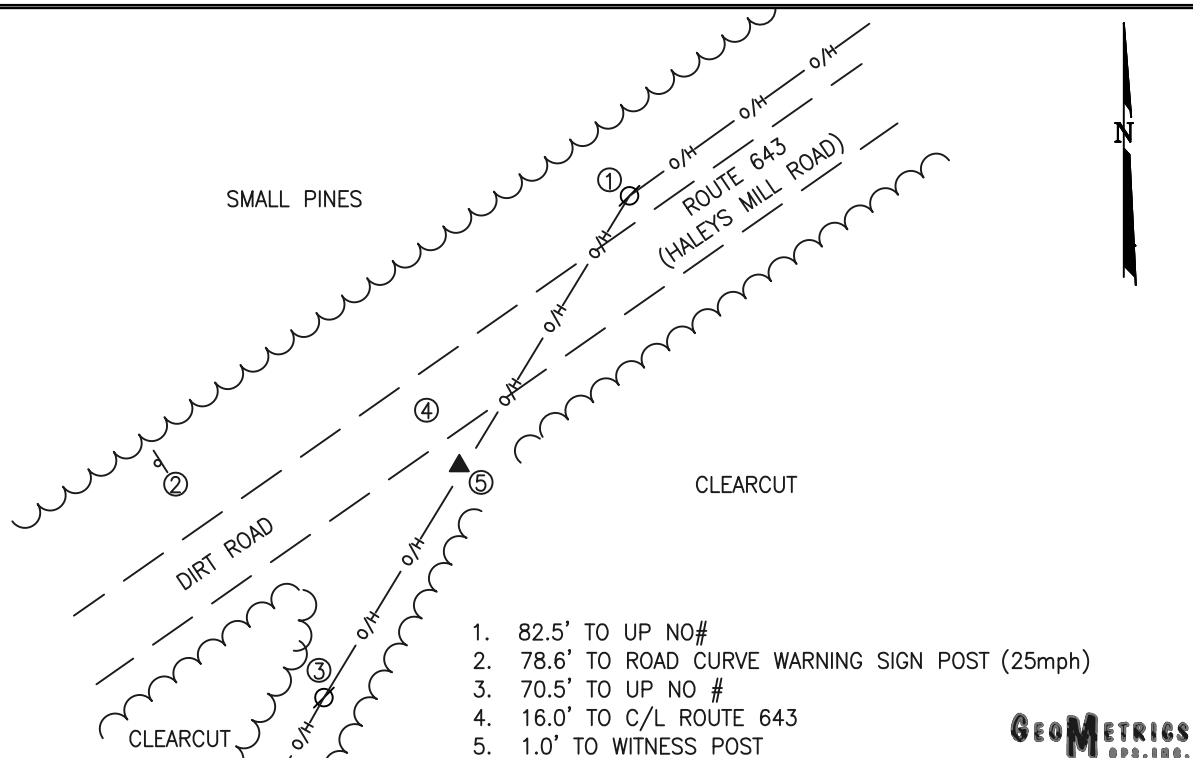
COUNTY	NAME OF STATION	YEAR
SPOTSYLVANIA	HALEYS	2003
N: 6732181.37	LAT: 38° 07' 57.98954" N	COMBINED FACTOR: 0.99997064
E: 11685130.98	LONG: 77° 47' 49.12153" W	∅ ANGLE: 0° 26' 20"
ELEVATION: 384.72' (ESTABLISHED BY GPS)		
DISTANCES AND DIRECTIONS TO AZIMUTH MARKS		
STATION	GROUND DISTANCE	TRUE AZIMUTH

THE STATION IS LOCATED IN SOUTHWESTERN SPOTSYLVANIA COUNTY, VIRGINIA, ABOUT 12 MILES SOUTHWEST OF THE SPOTSYLVANIA COUNTY COURTHOUSE.

TO REACH THE STATION FROM THE INTERSECTION OF STATE ROUTE 606 (MORRIS ROAD) AND US HIGHWAY 1 (JEFFERSON DAVIS HIGHWAY) IN THORNBURG GO WESTERLY ON STATE ROUTE 606 FOR 7.2 KM (4.5 MILES) TO AN INTERSECTION. CONTINUE AND GO NORTHWESTERLY ON STATE ROUTE 208 (COURTHOUSE ROAD) FOR 3.7 KM (2.3 MILES) TO STATE ROUTE 648 (BLOCKHOUSE ROAD). CONTINUE NORTHWESTERLY ON STATE ROUTE 208 FOR 1.9 KM (1.2 MILES) TO AN INTERSECTION. TURN LEFT AND GO SOUTHWESTERLY ON STATE ROUTE 208 FOR 6.4 KM (4.0 MILES) TO STATE ROUTE 602 (MASSEY ROAD) AND A SHELL GAS STATION ON THE RIGHT. CONTINUE SOUTHWESTERLY ON STATE ROUTE 208 FOR 4.8 KM (3.0 MILES) TO AN INTERSECTION. TURN RIGHT AND GO NORTHWESTERLY ON STATE ROUTE 601 (LAWYERS ROAD) FOR 3.5 KM (2.15 MILES) TO AN INTERSECTION. TURN LEFT AND GO SOUTHWESTERLY ON HALEYS MILL ROAD FOR 0.6 KM (0.35 MILE) TO THE STATION ON THE LEFT.

THE STATION IS A 3-1/2 INCH SPOTSYLVANIA COUNTY, VA, ALUMINUM SURVEY DISK SET INTO A POURED IN PLACE CONCRETE MONUMENT 8 INCHES IN DIAMETER FLUSH WITH THE GROUND SURFACE AND STAMPED HALEYS 2003

SKETCH:



1. 82.5' TO UP NO#
2. 78.6' TO ROAD CURVE WARNING SIGN POST (25mph)
3. 70.5' TO UP NO #
4. 16.0' TO C/L ROUTE 643
5. 1.0' TO WITNESS POST

**GEOMETRICS**  
OPS, INC.

DRAWN BY: BCL	CHECKED BY: LLR	DATE: 06/2003	APPROX. SCALE: 1" = 50'
---------------	-----------------	---------------	-------------------------