

SPOTSYLVANIA COUNTY VIRGINIA 2005 CONTROL SURVEY

JN 104-085

HORIZONTAL DATUM: NAD 83(2007) (REVISED 8-08)
 VERTICAL DATUM: NAVD 88
 COORDINATE SYSTEM: VIRGINIA STATE PLANE, NORTH ZONE
 UNITS: U.S. SURVEY FOOT

HORIZONTAL ORDER: FIRST
 VERTICAL ORDER: THIRD

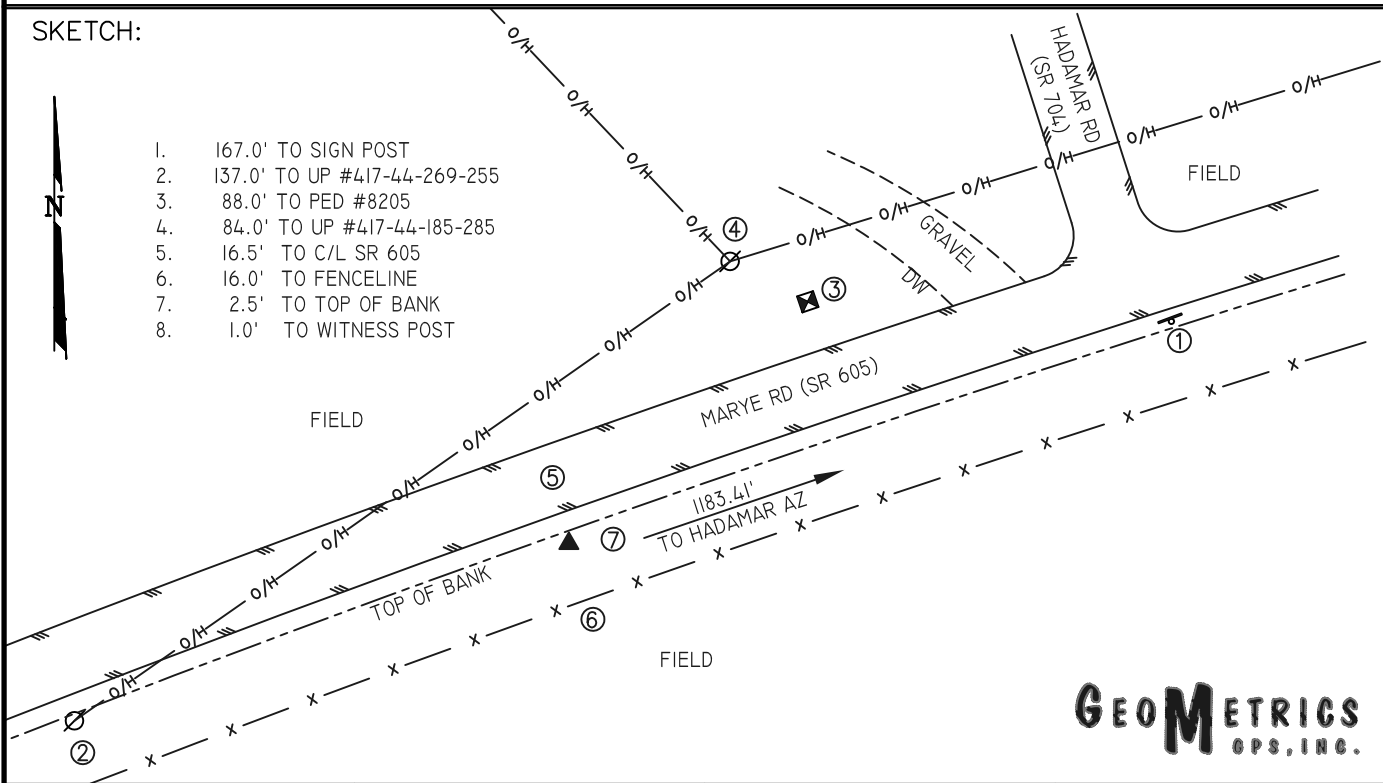
COUNTY	NAME OF STATION	YEAR
SPOTSYLVANIA	HADAMAR	2005
N: 6709803.95	LAT: 38° 04' 12.38081" N	COMBINED FACTOR: 0.99999371
E: 11736713.30	LONG: 077° 37' 06.25147" W	⊖ ANGLE: 0° 33' 01"
ELEVATION: 356.45' (ESTABLISHED BY GPS)		
DISTANCES AND DIRECTIONS TO AZIMUTH MARKS		
STATION	GROUND DISTANCE	TRUE AZIMUTH
HADAMAR AZ	1183.41	71°32'19"

THE STATION IS LOCATED IN SPOTSYLVANIA COUNTY, VIRGINIA, APPROXIMATELY 12.9 KM (8.0 MILES) NORTHEAST OF LOUISA, AND 10.8 KM (6.7 MILES) SOUTHWEST OF THORNBURG.

TO REACH THE STATION FROM THE INTERSECTION OF US HIGHWAY 1 (JEFFERSON DAVIS HIGHWAY) AND SR 606 (MORRIS ROAD) AT THORNBURG, GO SOUTH ON US HIGHWAY 1 FOR 3.1 KM (1.9 MILES) TO ITS INTERSECTION WITH SR 603 (ARCADIA ROAD). BEAR RIGHT AND GO SOUTHWEST ON SR 603 FOR 1.5 KM (0.9 MILE) TO ITS INTERSECTION WITH SR 605 (MARYE ROAD). TURN RIGHT AND GO NORTHWEST ON SR 605 FOR 5.2 KM (3.2 MILES) TO ITS INTERSECTION WITH SR 647 (BLAYDES CORNER ROAD). CONTINUE WEST ON SR 605 FOR 4.0 KM (2.5 MILES) TO ITS INTERSECTION WITH HADAMAR ROAD AND THE STATION ABOUT 150 FEET SOUTHWEST OF THE INTERSECTION.

THE STATION IS A SPOTSYLVANIA COUNTY, VA ALUMINUM SURVEY DISK SET INTO A Poured IN PLACE CONCRETE MONUMENT 10 INCHES IN DIAMETER, FLUSH WITH THE GROUND SURFACE AND STAMPED HADAMAR 2005. STATION HADAMAR IS INTER-VISIBLE WITH STATION HADAMAR AZ.

SKETCH:



1. 167.0' TO SIGN POST
2. 137.0' TO UP #417-44-269-255
3. 88.0' TO PED #8205
4. 84.0' TO UP #417-44-185-285
5. 16.5' TO C/L SR 605
6. 16.0' TO FENCELINE
7. 2.5' TO TOP OF BANK
8. 1.0' TO WITNESS POST

GEOMETRICS
GPS, INC.