

SPOTSYLVANIA COUNTY VIRGINIA 2003 CONTROL SURVEY

JN 103-009

HORIZONTAL DATUM: NAD 83(2007) (REVISED 8-08)
 VERTICAL DATUM: NAVD 88
 COORDINATE SYSTEM: VIRGINIA STATE PLANE, NORTH ZONE
 UNITS: U.S. SURVEY FOOT

HORIZONTAL ORDER: FIRST
 VERTICAL ORDER: THIRD

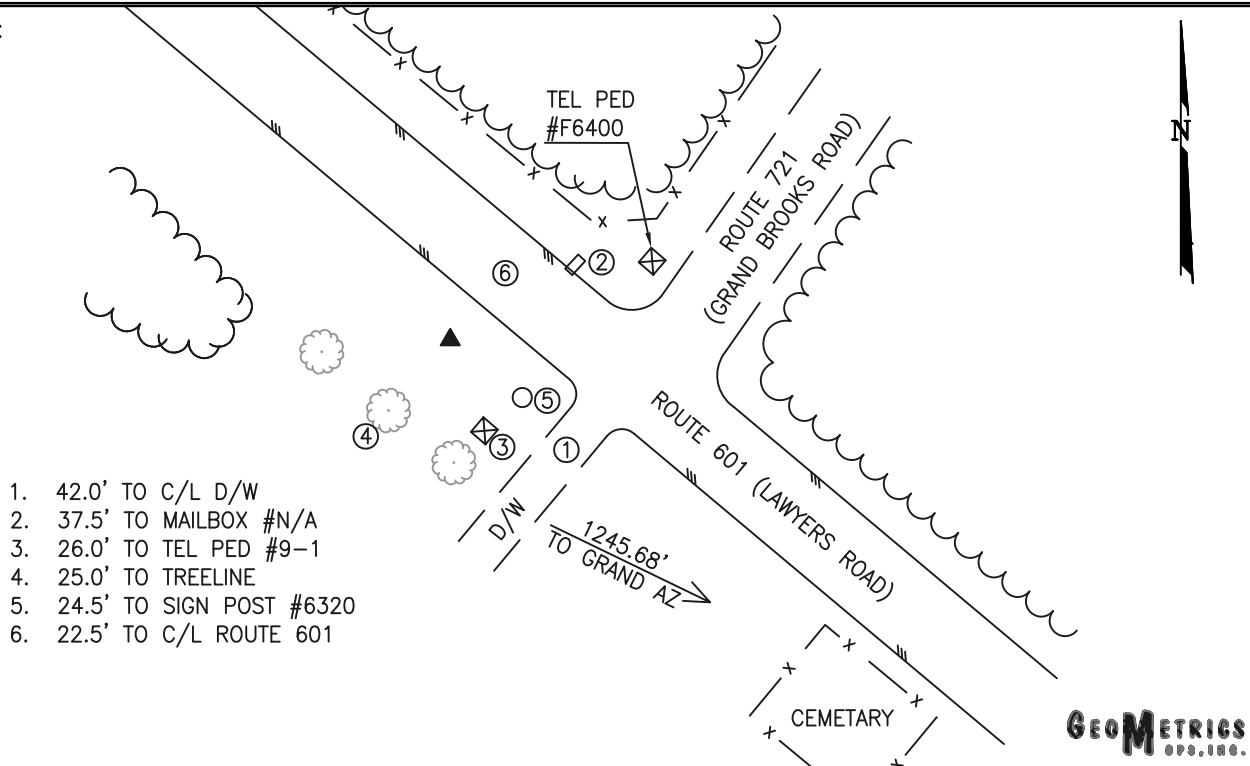
COUNTY	NAME OF STATION	YEAR
SPOTSYLVANIA	GRAND	2003
N: 6731868.49	LAT: 38° 07' 54.66309" N	COMBINED FACTOR: 0.99997146
E: 11688192.35	LONG: 77° 47' 10.83800" W	∅ ANGLE: 0° 26' 43"
ELEVATION: 370.25' (ESTABLISHED BY GPS)		
DISTANCES AND DIRECTIONS TO AZIMUTH MARKS		
STATION	GROUND DISTANCE	TRUE AZIMUTH
GRAND AZ	1245.68'	121° 56' 55"

THE STATION IS LOCATED IN SOUTHWESTERN SPOTSYLVANIA COUNTY, VIRGINIA. THE STATION IS ABOUT 11 MILES SOUTHWEST OF THE SPOTSYLVANIA COUNTY COURTHOUSE.

TO REACH THE STATION FROM THE INTERSECTION OF STATE ROUTE 606 (MORRIS ROAD) AND US HIGHWAY 1 (JEFFERSON DAVIS HIGHWAY) IN THORNBURG GO WESTERLY ON STATE ROUTE 606 FOR 7.2 KM (4.5 MILES) TO AN INTERSECTION. CONTINUE AND GO NORTHWESTERLY ON STATE ROUTE 208 (COURTHOUSE ROAD) FOR 3.7 KM (2.3 MILES) TO STATE ROUTE 648 (BLOCKHOUSE ROAD). CONTINUE NORTHWESTERLY ON STATE ROUTE 208 FOR 1.9 KM (1.2 MILES) TO AN INTERSECTION. TURN LEFT AND GO SOUTHWESTERLY ON STATE ROUTE 208 FOR 6.4 KM (4.0 MILES) TO STATE ROUTE 602 (MASSEY ROAD) AND A SHELL GAS STATION ON THE RIGHT. CONTINUE SOUTHWESTERLY ON STATE ROUTE 208 FOR 4.8 KM (3.0 MILES) TO AN INTERSECTION. TURN RIGHT AND GO NORTHWESTERLY ON STATE ROUTE 601 (LAWYERS ROAD) FOR 2.3 KM (1.4 MILES) TO THE STATION ON THEIR THE SOUTHWEST CORNER OF THE INTERSECTION LEFT .

STATION GRAND IS INTERVISIBLE WITH STATION GRAND AZ. THE STATION IS A 3-1/2 INCH SPOTSYLVANIA COUNTY, VA, ALUMINUM SURVEY DISK SET INTO A Poured IN PLACE CONCRETE MONUMENT 8 INCHES IN DIAMETER FLUSH WITH THE GROUND SURFACE AND STAMPED GRAND 2003.

SKETCH:



1. 42.0' TO C/L D/W
2. 37.5' TO MAILBOX #N/A
3. 26.0' TO TEL PED #9-1
4. 25.0' TO TREELINE
5. 24.5' TO SIGN POST #6320
6. 22.5' TO C/L ROUTE 601

GEOMETRICS
GPS, INC.