

**SPOTSYLVANIA COUNTY, VIRGINIA**  
**E911 GPS SURVEY REVISED 10/2008**

W.O. 95007

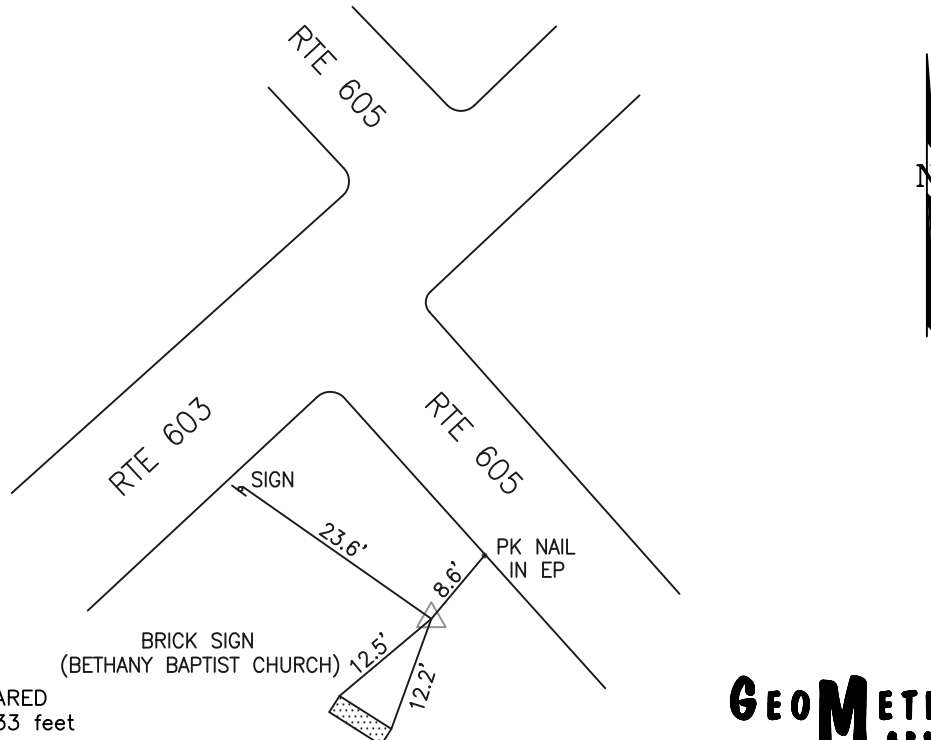
MAP PROJECTION: LAMBERT ORDER OF SURVEY: FIRST  
 NAD 83(2007) \* VIRGINIA STATE PLANE COORDINATE SYSTEM \* NORTH ZONE

COUNTY		NAME OF STATION		YEAR
SPOTSYLVANIA		BETHANY		1995
N: 6718976.36	E: 11760221.73	LAT.: 38°05'40.71625"N	LONG.: 77°32'11.09336"W	
GRID FACTOR: 0.99998975	SEA LEVEL FACTOR: 0.99999282	ϕ ANGLE: +0°36'05.01"		
ESTABLISHED BY: GeoMetrics GPS, INC.	YEAR 1995	DISTANCES AND DIRECTIONS TO REFERENCE MARKS AND PROMINENT OBJECTS OBSERVED AT STATION		
		OBJECT	DISTANCE-FT.	MAG. AZIMUTH
VERTICAL DATUM NAVD 88				
ELEVATION (FT.) 255.75				
RECOVERED: NOV 2000				

DESCRIPTION OF STATION:

The station is a Spotsylvania County survey disk set in concrete stamped BETHANY 1995 located in Spotsylvania County, Virginia, approximately 0.9 miles south of Arcadia at the Bethany Church. To reach the station from the intersection of U.S. Route 1 (Jefferson Davis Highway) and Route 603 (Arcadia Road) proceed southwest along Route 603 (Arcadia Road) 0.9 miles to the station on the left. No witness post. Pastor did not want one there. Mark is 3 inches below ground.

SKETCH OF STATION:



THIS SURVEY DATA PREPARED  
 USING 1 meter = 3.280833 feet

**GEOMETRICS**  
 GPS, INC.

236 CAMBRIDGE ROAD  
 FREDERICKSBURG, VIRGINIA  
 (540) 372-3499

PREPARED BY: EJP	DATE: AUG '95
CHECKED BY: DAR	DATE: AUG '95

NOTE:  
 IN 2008 THE COORDINATES WERE CONVERTED TO  
 NAD83(2007) BY APPLYING A COMPUTED SHIFT