

SPOTSYLVANIA COUNTY VIRGINIA 2003 CONTROL SURVEY

JN 103-009

HORIZONTAL DATUM: NAD 83(2007) (REVISED 8-08)
 VERTICAL DATUM: NAVD 88
 COORDINATE SYSTEM: VIRGINIA STATE PLANE, NORTH ZONE
 UNITS: U.S. SURVEY FOOT

HORIZONTAL ORDER: FIRST
 VERTICAL ORDER: THIRD

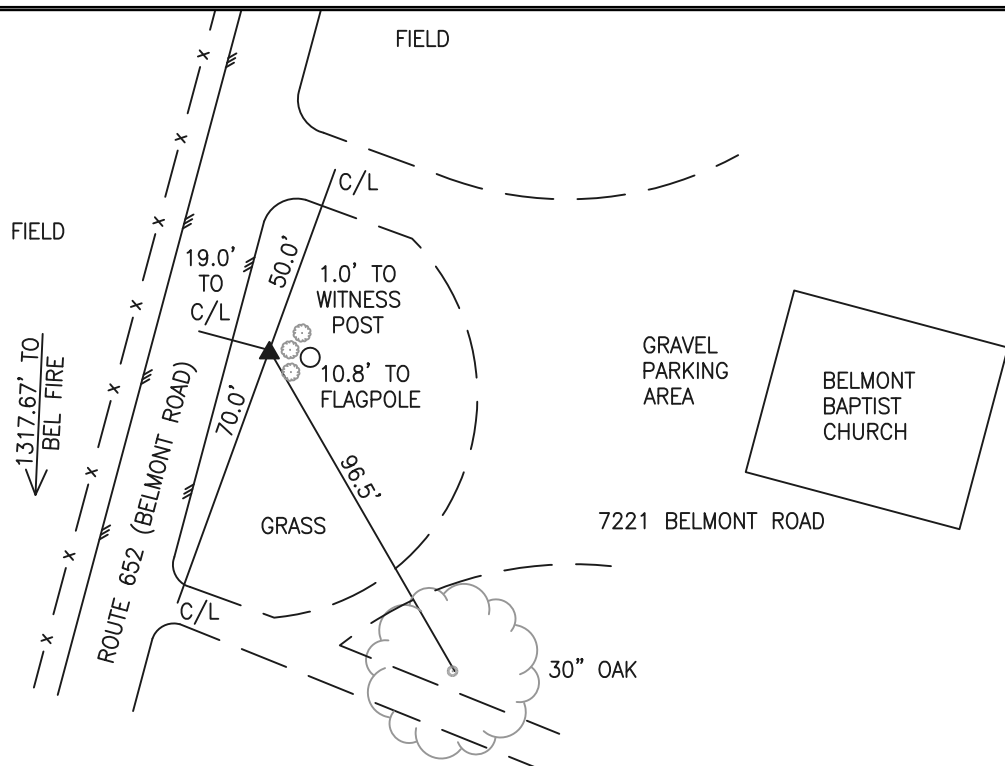
COUNTY	NAME OF STATION	YEAR
SPOTSYLVANIA	BEL FIRE AZ	2003
N: 6740842.61	LAT: 38° 09' 25.04310" N	COMBINED FACTOR: 0.99996932
E: 11665216.14	LONG: 77° 51' 57.61511" W	⊖ ANGLE: 0° 23' 44"
ELEVATION: 339.88' (ESTABLISHED BY GPS)		
DISTANCES AND DIRECTIONS TO AZIMUTH MARKS		
STATION	GROUND DISTANCE	TRUE AZIMUTH
BEL FIRE	1317.67'	182° 21' 42"

THE STATION IS LOCATED IN SOUTHWESTERN SPOTSYLVANIA COUNTY, VIRGINIA, ABOUT 15 MILES SOUTHWEST OF THE SPOTSYLVANIA COUNTY COURTHOUSE. THE STATION IS IN FRONT OF BELMONT BAPTIST CHURCH LOCATED AT 7221 BELMONT ROAD.

TO REACH THE STATION FROM THE INTERSECTION OF US HIGHWAY 522 (ZACHARY TAYLOR HIGHWAY) AND STATE ROUTE 719 (BELMONT/DAYS BRIDGE ROAD) IN ORANGE COUNTY GO SOUTHEASTERLY ON BELMONT/DAYS BRIDGE ROAD FOR 6.1 KM (3.8 MILES) TO AN INTERSECTION. TURN LEFT AND GO NORTHERLY ON STATE ROUTE 652 (BELMONT ROAD) FOR 1.8 KM (1.1 MILES) TO THE STATION ON THE RIGHT. STATION BEL FIRE AZ IS INTERVISIBLE WITH STATION BEL FIRE.

THE STATION IS A 3-1/2 INCH SPOTSYLVANIA COUNTY, VA, ALUMINUM SURVEY DISK SET INTO A Poured IN PLACE CONCRETE MONUMENT 8 INCHES IN DIAMETER FLUSH WITH THE GROUND SURFACE AND STAMPED BEL FIRE AZ 2003.

SKETCH:



GEOMETRICS
OPS., INC.

DRAWN BY: BCL

CHECKED BY: LLR

DATE: 06/2003

APPROX. SCALE: 1" = 50'