

**SPOTSYLVANIA COUNTY VIRGINIA  
2006 CONTROL SURVEY (RE-ADJUSTED 2008)**

JN 105-138

HORIZONTAL DATUM: NAD 83(2007)  
VERTICAL DATUM: NAVD 88  
COORDINATE SYSTEM: VIRGINIA STATE PLANE, NORTH ZONE  
UNITS: U.S. SURVEY FOOT

HORIZONTAL ORDER: FIRST  
VERTICAL ORDER: THIRD

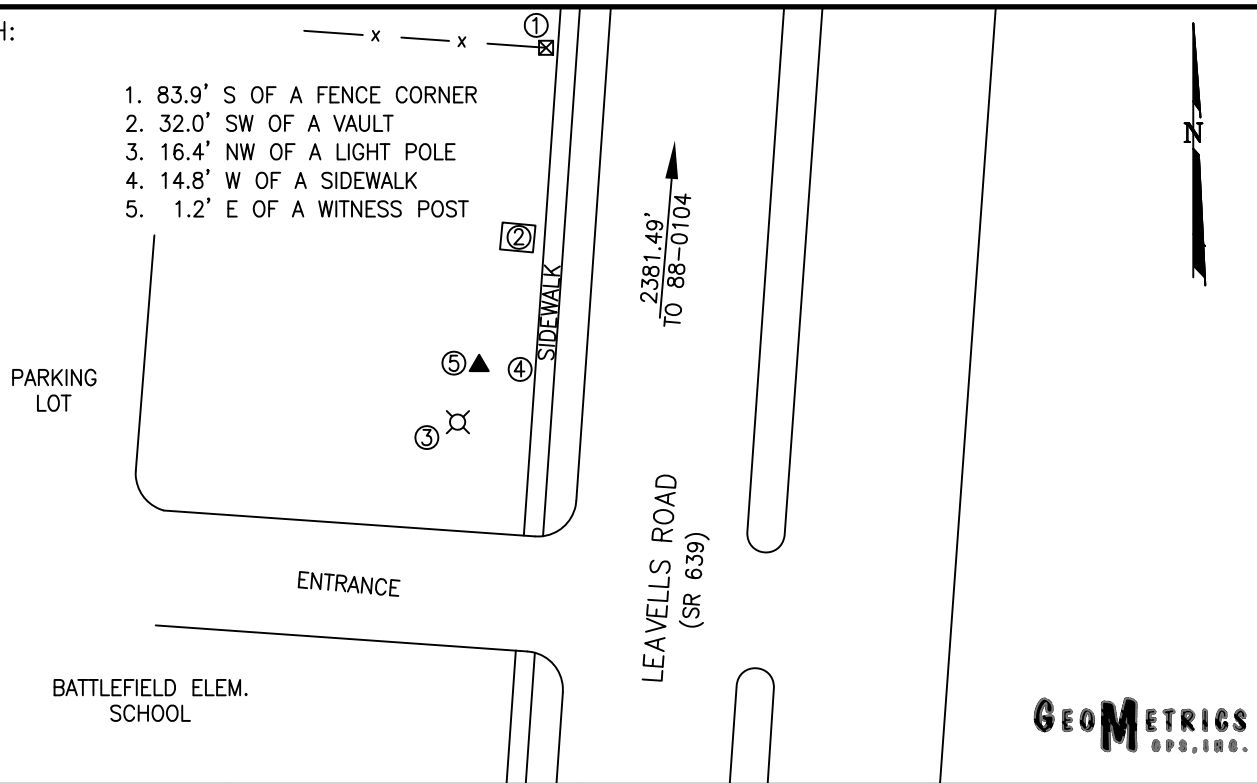
COUNTY	NAME OF STATION	YEAR
SPOTSYLVANIA	BATTLE	2006
N: 6780790.35	LAT: 38° 15' 51.94228" N	COMBINED FACTOR: 0.99996726
E: 11758408.63	LONG: 077° 32' 25.69069" W	⊖ ANGLE: 0° 35' 55.9"
ELEVATION: 296.90' (ESTABLISHED BY GPS)		
DISTANCES AND DIRECTIONS TO AZIMUTH MARKS		
STATION	GROUND DISTANCE	TRUE AZIMUTH
88 0104	2381.49'	15°55'48"

THE STATION IS LOCATED ABOUT 8.2 KM (5.1 MILES) NORTHEAST OF SPOTSYLVANIA, AND 7.7 KM (4.8 MILES) SOUTHWEST OF FREDERICKSBURG.

TO REACH THE STATION FROM THE INTERSECTION OF INTERSTATE 95 AND SR 3 (PLANK ROAD) (AT EXIT 130), GO WEST ON SR 3 FOR 2.4 KM (1.5 MILES) TO ITS INTERSECTION WITH SR 639 (SALEM CHURCH ROAD). TURN LEFT AND GO SOUTH ON SR 639 FOR 2.3 KM (1.4 MILES) TO ITS INTERSECTION WITH SR 620 (HARRISON ROAD). CONTINUE SOUTH ON SR 639 THRU THE LIGHT (THE ROAD BECOMES LEAVELLS ROAD) FOR 0.64 KM (0.4 MILE) TO THE STATION ON THE RIGHT IN FRONT OF THE BATTLEFIELD ELEMENTARY SCHOOL.

THE STATION IS A STANDARD SPOTSYLVANIA COUNTY, VA ALUMINUM SURVEY DISK SET INTO A POURED IN PLACE CONCRETE MONUMENT 10 INCHES IN DIAMETER, FLUSH WITH THE GROUND SURFACE AND STAMPED BATTLE 2006.

SKETCH:



**GEOMETRICS**  
SRS, INC.