

**SPOTSYLVANIA COUNTY VIRGINIA
2007 GEODETIC CONTROL SURVEY**

JN 107-065

HORIZONTAL DATUM: NAD 83(2007)
VERTICAL DATUM: NAVD 88
COORDINATE SYSTEM: VIRGINIA STATE PLANE, NORTH ZONE
UNITS: U.S. SURVEY FOOT

HORIZONTAL ORDER: FIRST
VERTICAL ORDER: THIRD

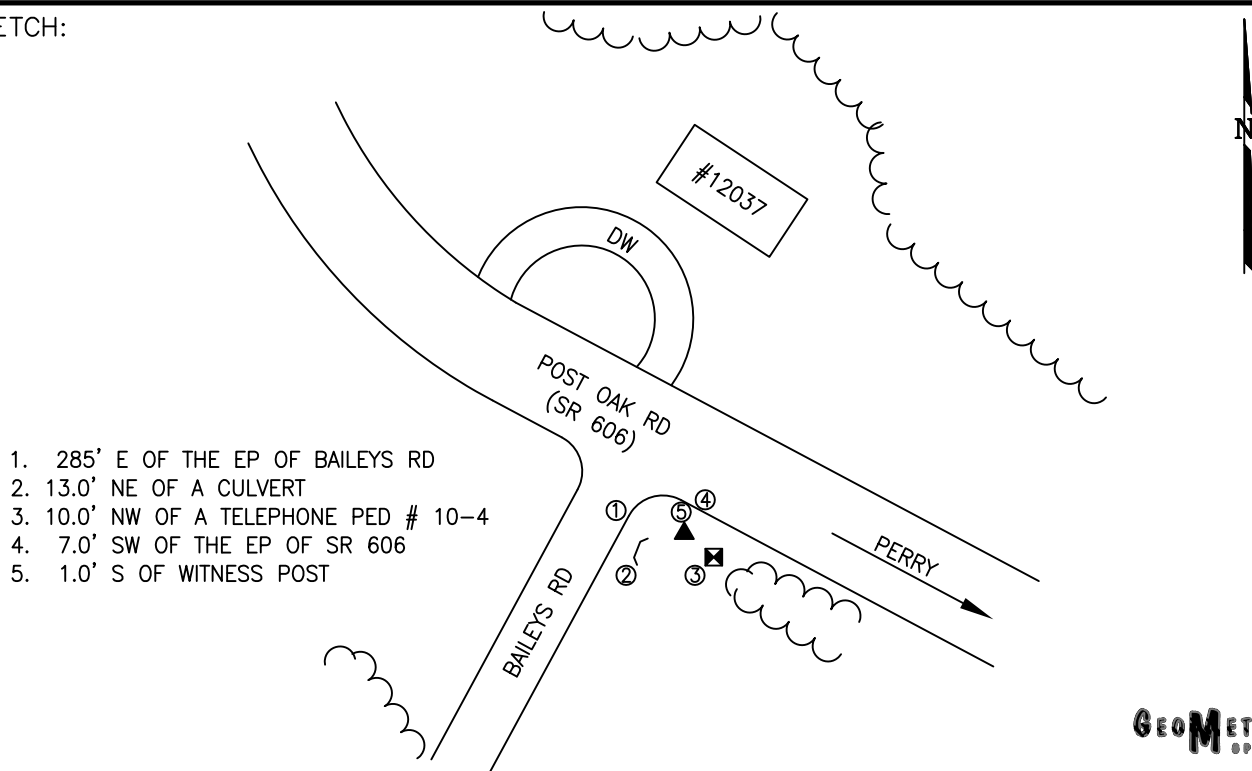
COUNTY	NAME OF STATION	YEAR
SPOTSYLVANIA	BAILEYS	2007
N: 6745725.73	LAT: 38° 10' 10.89873" N	COMBINED FACTOR: 0.99996584
E: 11697704.50	LONG: 77° 45' 10.38068" W	⊖ ANGLE: 0° 27' 59"
ELEVATION: 376.22' (ESTABLISHED BY GPS)		
DISTANCES AND DIRECTIONS TO AZIMUTH MARKS		
STATION	GROUND DISTANCE	TRUE AZIMUTH
PERRY	816.06	115° 38' 55"

THE STATION IS LOCATED ABOUT 14.6 KM (9.1 MILES) WEST OF SPOTSYLVANIA, AND 15.8 KM (9.8 MILES) SOUTH OF LOCUST GROVE.

TO REACH THE STATION FROM THE INTERSECTION OF SR 208 (COURTHOUSE ROAD) AND SR 613 (BROCK ROAD), AT THE SPOTSYLVANIA COURTHOUSE, GO NORTH ON SR 613 FOR 0.8 KM (0.5 MILE) TO ITS INTERSECTION WITH SR 608 (ROBERT E LEE DRIVE). TURN LEFT AND GO WEST ON SR 608 FOR 8.0 KM (5.0 MILES) TO ITS INTERSECTION WITH OLDE MEADOW WAY. CONTINUE WEST SR 608 FOR 3.2 KM (2.0 MILES) TO ITS INTERSECTION WITH SR 608 (WEST CATHARPIN ROAD). CONTINUE WEST ON SR 608 FOR 0.5 KM (0.3 MILE) TO ITS INTERSECTION WITH SR 612 (PAMUNKEY ROAD). TURN LEFT AND GO SOUTH ON SR 612 FOR 6.6 KM (4.1 MILES) TO ITS INTERSECTION WITH SR 606 (POST OAK ROAD). TURN LEFT AND GO SOUTHEAST ON SR 606 FOR 3.0 KM (1.9 MILES) TO ITS INTERSECTION WITH BAILEYS ROAD AND THE STATION ON THE RIGHT AT THE INTERSECTION.

THE STATION IS A STANDARD SPOTSYLVANIA COUNTY, VA ALUMINUM SURVEY DISK SET INTO A Poured IN PLACE CONCRETE MONUMENT 10 INCHES IN DIAMETER, FLUSH WITH GROUND SURFACE AND STAMPED BAILEYS 2007.

SKETCH:



1. 285' E OF THE EP OF BAILEYS RD
2. 13.0' NE OF A CULVERT
3. 10.0' NW OF A TELEPHONE PED # 10-4
4. 7.0' SW OF THE EP OF SR 606
5. 1.0' S OF WITNESS POST

GEOMETRICS
GPS, INC.

DRAWN BY: KLS

CHECKED BY: DAR

DATE: 06/2008

APPROX. SCALE: 1" = 50'