

SPOTSYLVANIA COUNTY, VIRGINIA
E911 GPS SURVEY REVISED 10/2008

W.O. 95007

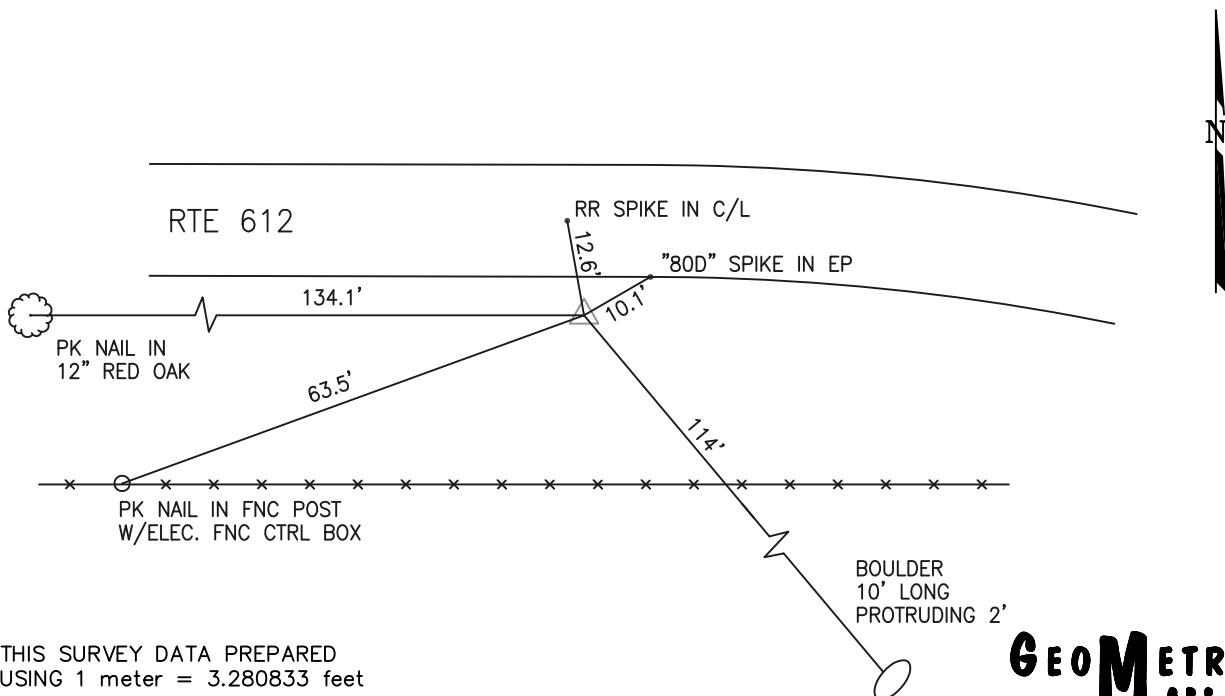
MAP PROJECTION: LAMBERT ORDER OF SURVEY: FIRST
NAD 83(2007) * VIRGINIA STATE PLANE COORDINATE SYSTEM * NORTH ZONE

COUNTY		NAME OF STATION		YEAR
ORANGE		ANNA		1995
N: 6732505.25	E: 11642328.06	LAT.: 38°08'04.08862"N	LONG.: 77°56'44.79604"W	
GRID FACTOR: 0.99998369	SEA LEVEL FACTOR: 0.99998796		ϕ ANGLE: +0°20'45.24"	
ESTABLISHED BY: GeoMetrics GPS, INC.	YEAR 1995	DISTANCES AND DIRECTIONS TO REFERENCE MARKS AND PROMINENT OBJECTS OBSERVED AT STATION		
		OBJECT	DISTANCE-FT.	MAG. AZIMUTH
VERTICAL DATUM NAVD 88				
ELEVATION (FT.) 357.49				
RECOVERED: OCT 2000				

DESCRIPTION OF STATION:

The station is a Spotsylvania County survey disk set in concrete stamped ANNA 1995, located in Orange County, Virginia, approximately 9.0 miles northwest of Mineral. To reach the station from the interesection of Route 208 (Courthouse Road) and Route 522 (Zachary Taylor Highway) proceed northwest along Route 522 (Zachary Taylor Highway) 5.3 miles to its intersection with Route 612 (Monrovia Road). Turn left and proceed west along Route 612 (Monrovia Road) 1.5 miles to the Orange/Spotsylvania county line. Proceed west along Route 612 0.2 miles to the station on the left. Witness post set S15°W at 34.2 feet.

SKETCH OF STATION:



THIS SURVEY DATA PREPARED
USING 1 meter = 3.280833 feet

GEOMETRICS
GPS, INC.

236 CAMBRIDGE ROAD
FREDERICKSBURG, VIRGINIA
(540) 372-3499

PREPARED BY: EJP	DATE: AUG '95
CHECKED BY: DAR	DATE: AUG '95

NOTE:
IN 2008 THE COORDINATES WERE CONVERTED TO
NAD83(2007) BY APPLYING A COMPUTED SHIFT