

SPOTSYLVANIA COUNTY, VIRGINIA
 E911 GPS SURVEY REVISED 10/2008

W.O. 95007

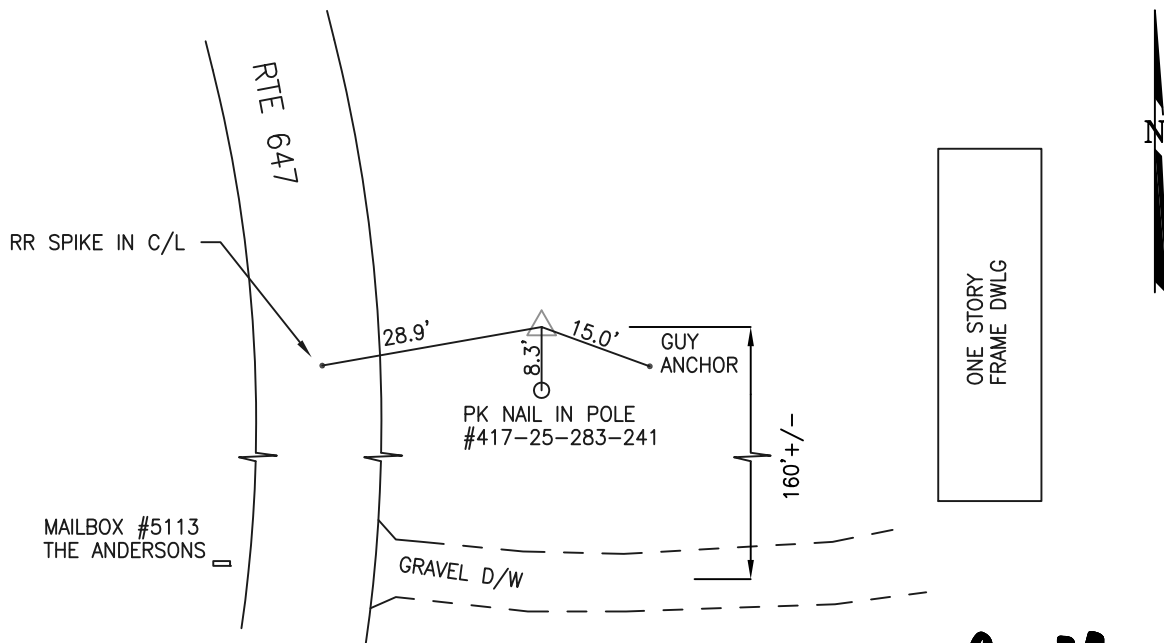
MAP PROJECTION: LAMBERT ORDER OF SURVEY: FIRST
 NAD 83(2007) * VIRGINIA STATE PLANE COORDINATE SYSTEM * NORTH ZONE

COUNTY		NAME OF STATION		YEAR
SPOTSYLVANIA		ANDERSON		1995
N: 6719616.02	E: 11743511.09	LAT.: 38°05'48.72114"N	LONG.: 77°35'40.03978"W	
GRID FACTOR: 0.99998939	SEA LEVEL FACTOR: 0.99999075		ϕ ANGLE: +0°33'54.60"	
ESTABLISHED BY: GeoMetrics GPS, INC.	YEAR 1995	DISTANCES AND DIRECTIONS TO REFERENCE MARKS AND PROMINENT OBJECTS OBSERVED AT STATION		
		OBJECT	DISTANCE-FT.	MAG. AZIMUTH
VERTICAL DATUM NAVD 88				
ELEVATION (FT.) 298.97				
RECOVERED: NOV 2000				

DESCRIPTION OF STATION:

The station is a Spotsylvania County survey disk set in concrete stamped Anderson 1995 located in Spotsylvania County, Virginia, approximately 4.5 miles southeast of Snell. To reach the station from the intersection of Route 208 (Courthouse Road), Route 606 (Morris Road) and Route 738 (Partlow Road) at Snell, proceed south along Route 738 (Partlow Road) 2.0 miles to its intersection with Route 647 (Blaydes Corner Road). Turn left and proceed southeast along Route 647 (Blaydes Corner Road) 2.3 miles to the station on the left. Witness post set S80°W at 0.8 feet.

SKETCH OF STATION:



THIS SURVEY DATA PREPARED
 USING 1 meter = 3.280833 feet

GEOMETRICS
 OPS, INC.

236 CAMBRIDGE ROAD
 FREDERICKSBURG, VIRGINIA
 (540) 372-3499

PREPARED BY: EJP	DATE: AUG '95
CHECKED BY: DAR	DATE: AUG '95

NOTE:
 IN 2008 THE COORDINATES WERE CONVERTED TO
 NAD83(2007) BY APPLYING A COMPUTED SHIFT