

SPOTSYLVANIA COUNTY, VIRGINIA
 GEODETIC SURVEY CONTROL REVISED 10/2008

MAP PROJECTION: LAMBERT HORIZONTAL ORDER OF SURVEY: THIRD
 NAD 83(2007) * VIRGINIA STATE PLANE COORDINATE SYSTEM * NORTH ZONE

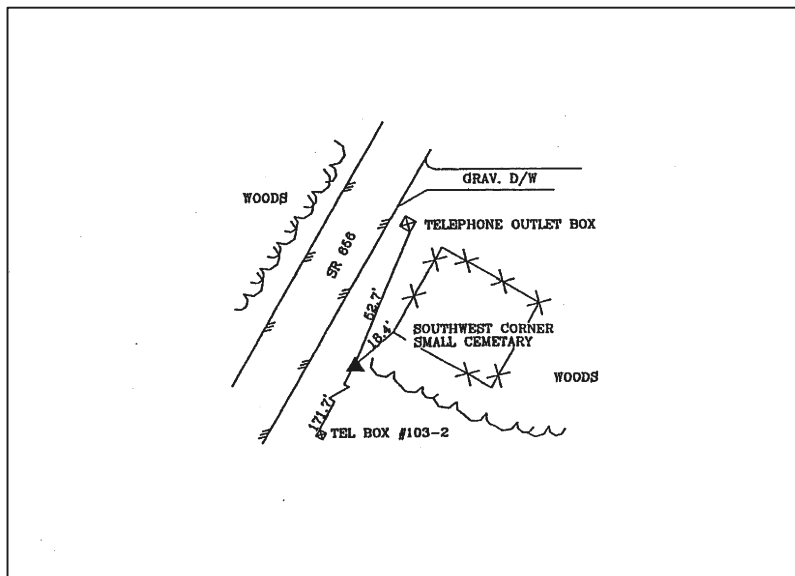
COUNTY		NAME OF STATION		YEAR
SPOTSYLVANIA		88-0138		2000
N: 6731943.15	E: 11720311.99	LAT.: 38°07'52.73965"N	LONG.: 77°40'28.85104"W	
GRID FACTOR: 0.9999841524	COMBINED FACTOR: 0.99997549		ϕ ANGLE: +0°30'54"	
ESTABLISHED BY: VDOT	YEAR 1999	DISTANCES AND DIRECTIONS TO REFERENCE MARKS AND PROMINENT OBJECTS OBSERVED AT STATION		
		OBJECT	DISTANCE-FT.	AZIMUTH
VERTICAL DATUM	NAVD 88	Small Cemetery	18.4'	32° 00' 00"
ELEVATION (FT.)	287.50	Telephone Outlet Box	52.7'	30° 00' 00"
VERTICAL ORDER:	THIRD	Telephone Outlet Box	171.7'	209° 00' 00"

DESCRIPTION OF STATION:

Standard metal VDOT disk stamped 88-0138, set in concrete flush with the ground surface.

To reach this monument from the intersection of Rt. 614 (Dickerson Road) and Route 656 (Towles Mill Road), proceed north northeast along Rt. 656 (Towles Mill Road) a distance of 2.31 miles to the monument on the right.

SKETCH OF STATION:



THIS SURVEY DATA PREPARED
 USING 1 meter = 39.37 inches

PREPARED BY: KRO	DATE: JAN '01
CHECKED BY: DAR	DATE: JAN '01

NOTE:
 IN 2008 THE COORDINATES WERE CONVERTED TO
 NAD83(2007) BY APPLYING A COMPUTED SHIFT

GEOMETRICS
 OPS, INC.

236 CAMBRIDGE STREET
 FREDERICKSBURG, VIRGINIA
 (540) 372-3499