

SPOTSYLVANIA COUNTY, VIRGINIA  
 GEODETIC SURVEY CONTROL REVISED 10/2008

MAP PROJECTION: LAMBERT

HORIZONTAL ORDER OF SURVEY: THIRD

NAD 83(2007) \* VIRGINIA STATE PLANE COORDINATE SYSTEM \* NORTH ZONE

COUNTY	NAME OF STATION	YEAR
SPOTSYLVANIA	88-0137	2000

N: 6731547.45	E: 11720145.69	LAT.: 38°07'48.84284"N	LONG.: 77°40'30.97672"W
GRID FACTOR: 0.9999843117	COMBINED FACTOR: 0.99997637	ϕ ANGLE: +0°30'53"	

ESTABLISHED BY: VDOT	YEAR 1999	DISTANCES AND DIRECTIONS TO REFERENCE MARKS AND PROMINENT OBJECTS OBSERVED AT STATION	
-------------------------	--------------	--	--

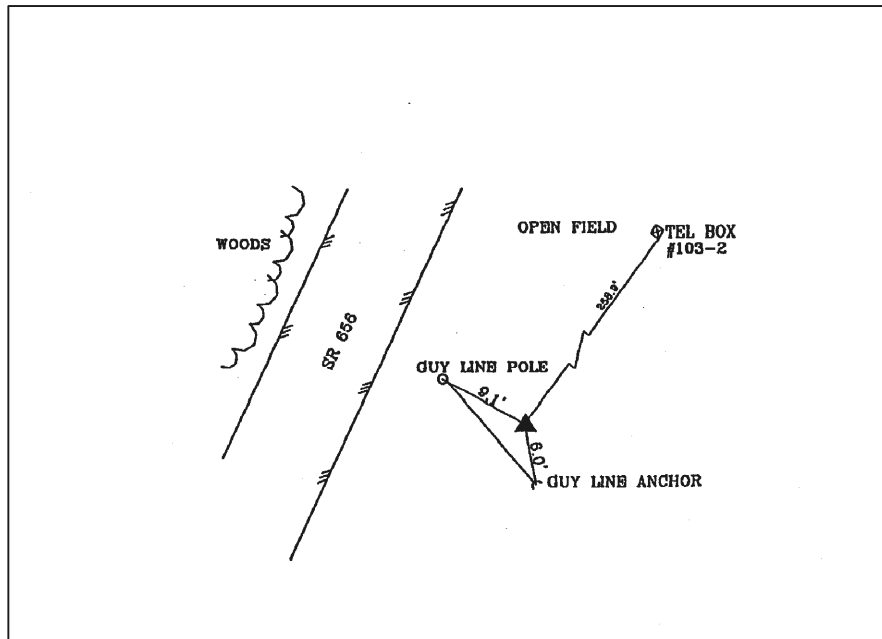
	OBJECT	DISTANCE-FT.	AZIMUTH
VERTICAL DATUM NAVD 88	Guy Line Anchor	6.0'	170° 00' 00"
ELEVATION (FT.) 272.43	Guy Line Pole	9.15'	345° 00' 00"
VERTICAL ORDER: THIRD	Telephone Box # 103-2	258.9'	184° 00' 00"

DESCRIPTION OF STATION:

Standard metal VDOT disk stamped 88-0137, set in concrete flush with the ground surface.

To reach this monument from the intersection of Rt. 614 (Dickerson Road) and Route 656 (Towles Mill Road), proceed north northeast along Rt. 656 (Towles Mill Road) a distance of 2.25 miles to the monument on the right.

SKETCH OF STATION:



THIS SURVEY DATA PREPARED  
 USING 1 meter = 39.37 inches

PREPARED BY: KRO	DATE: JAN '01
CHECKED BY: DAR	DATE: JAN '01

NOTE:  
 IN 2008 THE COORDINATES WERE CONVERTED TO  
 NAD83(2007) BY APPLYING A COMPUTED SHIFT

**GEOMETRICS**  
 OPS, INC.

236 CAMBRIDGE STREET  
 FREDERICKSBURG, VIRGINIA  
 (540) 372-3499