

SPOTSYLVANIA COUNTY, VIRGINIA  
 GEODETIC SURVEY CONTROL REVISED 10/2008

MAP PROJECTION: LAMBERT HORIZONTAL ORDER OF SURVEY: THIRD  
 NAD 83(2007) \* VIRGINIA STATE PLANE COORDINATE SYSTEM \* NORTH ZONE

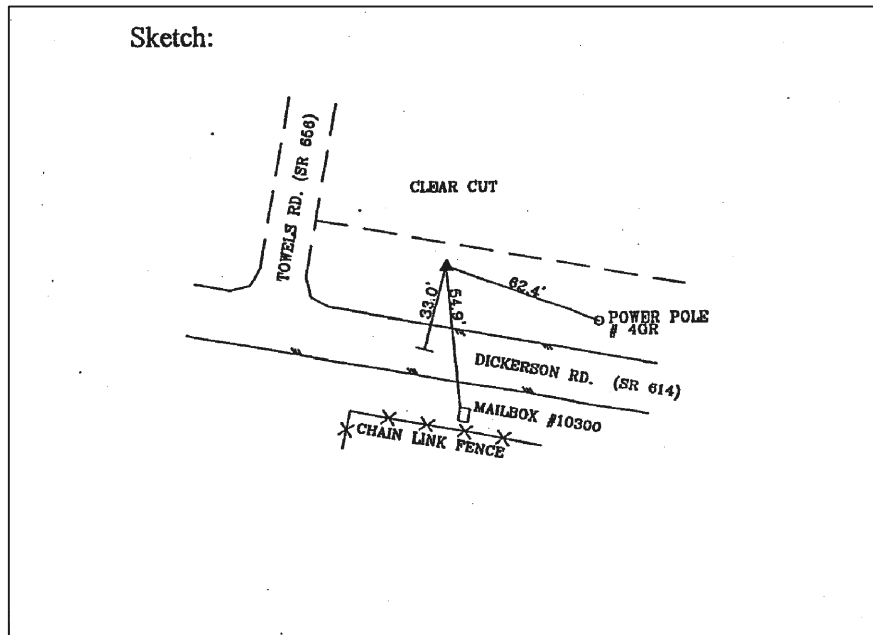
COUNTY		NAME OF STATION		YEAR
SPOTSYLVANIA		88-0133		2000
N: 6721627.21	E: 11715596.10	LAT.: 38°06'11.17857"N	LONG.: 77°41'29.00737"W	
GRID FACTOR: 0.9999884188	COMBINED FACTOR: 0.99997720		ϕ ANGLE: +0°30'17"	
ESTABLISHED BY: VDOT	YEAR 1999	DISTANCES AND DIRECTIONS TO REFERENCE MARKS AND PROMINENT OBJECTS OBSERVED AT STATION		
		OBJECT	DISTANCE-FT.	AZIMUTH
VERTICAL DATUM	NAVD 88	Power Pole # 4GR	62.4'	115° 00' 00"
ELEVATION (FT.)	341.11	Mail Box # 10300	54.9'	162° 00' 00"
VERTICAL ORDER: THIRD		c/l of Rt. 614 (Dickerson Road)	33.0'	195° 00' 00"

DESCRIPTION OF STATION:

Standard metal VDOT disk stamped 88-0133, set in concrete flush with the ground surface.

To reach this monument from the intersection of Rt. 614 (Dickerson Road) and Route 656 (Towles Mill Road), proceed east along Rt. 614 (Dickerson Road) a distance of 0.09 miles to the monument on the left.

SKETCH OF STATION:



THIS SURVEY DATA PREPARED  
 USING 1 meter = 39.37 inches

PREPARED BY: KRO	DATE: JAN '01
CHECKED BY: DAR	DATE: JAN '01

NOTE:  
 IN 2008 THE COORDINATES WERE CONVERTED TO  
 NAD83(2007) BY APPLYING A COMPUTED SHIFT

**GEOMETRICS**  
 GPS, INC.

236 CAMBRIDGE STREET  
 FREDERICKSBURG, VIRGINIA  
 (540) 372-3499