

SPOTSYLVANIA COUNTY, VIRGINIA
 GEODETIC SURVEY CONTROL REVISED 10/2008

MAP PROJECTION: LAMBERT
 NAD 83(2007) * VIRGINIA STATE PLANE COORDINATE SYSTEM * NORTH ZONE

HORIZONTAL ORDER OF SURVEY: THIRD

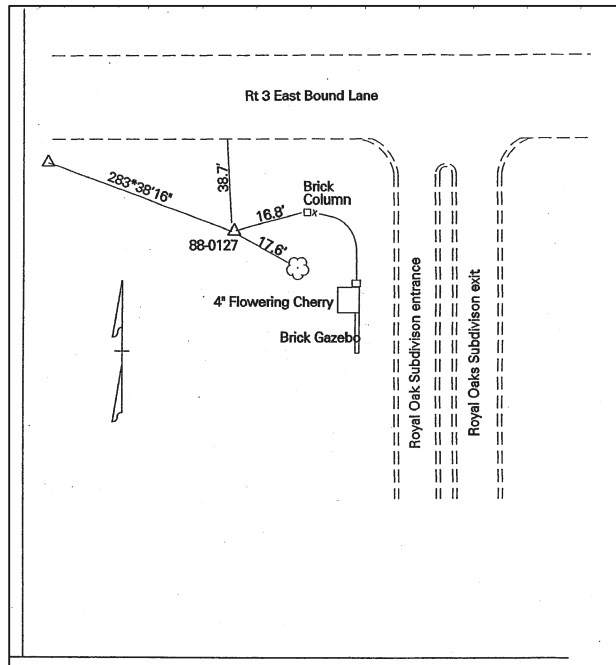
COUNTY		NAME OF STATION		YEAR
SPOTSYLVANIA		88-0127		2000
N: 6790780.96	E: 11747833.76	LAT.: 38°17'31.77220"N	LONG.: 77°34'37.01710"W	
GRID FACTOR: 0.9999644123	COMBINED FACTOR: 0.99996948		ϕ ANGLE: +0°34'34"	
ESTABLISHED BY: VDOT	YEAR 1999	DISTANCES AND DIRECTIONS TO REFERENCE MARKS AND PROMINENT OBJECTS OBSERVED AT STATION		
		OBJECT	DISTANCE-FT.	AZIMUTH
VERTICAL DATUM		88-0128	Unknown	283° 38' 16"
ELEVATION (FT.)				
VERTICAL ORDER: THIRD				

DESCRIPTION OF STATION:

Standard metal VDOT disk stamped 88-0127, set in concrete 0.10' below the ground surface.

To reach this monument from the Interstate 95 overpass proceed west on Route 3 (Plank Road) 3.9 miles to the intersection of Route 3 (Plank Road) and Route Big Ben Boulevard. This is the entrance to Royal Oaks Subdivision. Monument is 38.7 feet south of edge of pavement of Route 3 (Plank Road) eastbound lane.

SKETCH OF STATION:



THIS SURVEY DATA PREPARED
 USING 1 meter = 39.37 inches

NOTE:

COORDINATE AND ELEVATION DATA LISTED ABOVE IS
 CONVERTED TO NAD83/93 AND NAVD88 BY USING
 CORPSCON. IN 2008 THE COORDINATES WERE CONVERTED
 TO NAD83(2007) BY APPLYING A COMPUTED SHIFT.

GEOMETRICS
 ops, inc.

236 CAMBRIDGE STREET
 FREDERICKSBURG, VIRGINIA
 (540) 372-3499

PREPARED BY: KRO	DATE: JAN '01
CHECKED BY: DAR	DATE: JAN '01