

SPOTSYLVANIA COUNTY, VIRGINIA  
 GEODETIC SURVEY CONTROL REVISED 10/2008

MAP PROJECTION: LAMBERT  
 NAD 83(2007) \* VIRGINIA STATE PLANE COORDINATE SYSTEM \* NORTH ZONE

HORIZONTAL ORDER OF SURVEY: THIRD

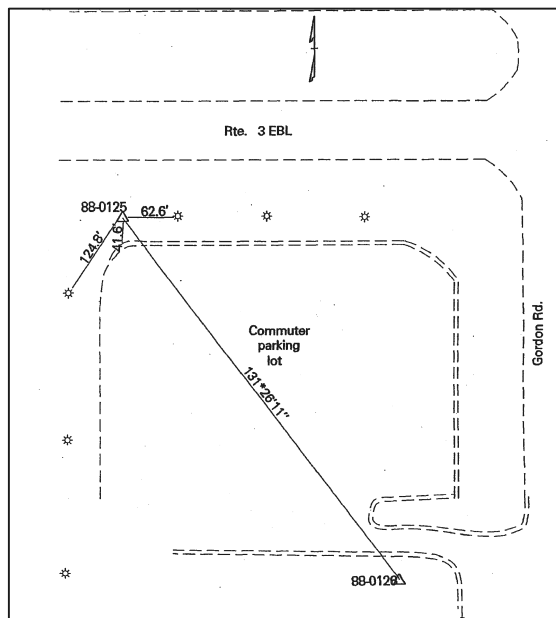
COUNTY		NAME OF STATION		YEAR
SPOTSYLVANIA		88-0125		2000
N: 6790244.13	E: 11751667.21	LAT.: 38°17'26.08188"N	LONG.: 77°33'49.00423"W	
GRID FACTOR: 0.9999645683	COMBINED FACTOR: 0.99996964		ϕ ANGLE: +0°35'04"	
ESTABLISHED BY: VDOT	YEAR 1999	DISTANCES AND DIRECTIONS TO REFERENCE MARKS AND PROMINENT OBJECTS OBSERVED AT STATION		
		OBJECT	DISTANCE-FT.	AZIMUTH
VERTICAL DATUM		88-0126	Unknown	131° 26' 11"
ELEVATION (FT.)				
VERTICAL ORDER: THIRD				

DESCRIPTION OF STATION:

Standard metal VDOT disk stamped 88-0125, set in concrete 0.10' below the ground surface.

To reach this monument from the Interstate 95 overpass proceed west on Route 3 (Plank Road) 3.0 miles. This will be at the Commuter Lot @ Route 627 (Gordon Road) and Route 3 (Plank Road) west of Five Mile Fork. Monument is located in the northwest quadrant of the commuter lot.

SKETCH OF STATION:



THIS SURVEY DATA PREPARED  
 USING 1 meter = 39.37 inches

NOTE:

COORDINATE AND ELEVATION DATA LISTED ABOVE IS  
 CONVERTED TO NAD83/93 AND NAVD88 BY USING CORPSCON.  
 IN 2008 THE COORDINATES WERE CONVERTED TO NAD83(2007)  
 BY APPLYING A COMPUTED SHIFT.

**GEOMETRICS**  
 GPS, INC.

236 CAMBRIDGE STREET  
 FREDERICKSBURG, VIRGINIA  
 (540) 372-3499

PREPARED BY: KRO	DATE: JAN '01
CHECKED BY: DAR	DATE: JAN '01