

SPOTSYLVANIA COUNTY, VIRGINIA
 GEODETIC SURVEY CONTROL REVISED 10/2008

MAP PROJECTION: LAMBERT HORIZONTAL ORDER OF SURVEY: THIRD
 NAD 83(2007) * VIRGINIA STATE PLANE COORDINATE SYSTEM * NORTH ZONE

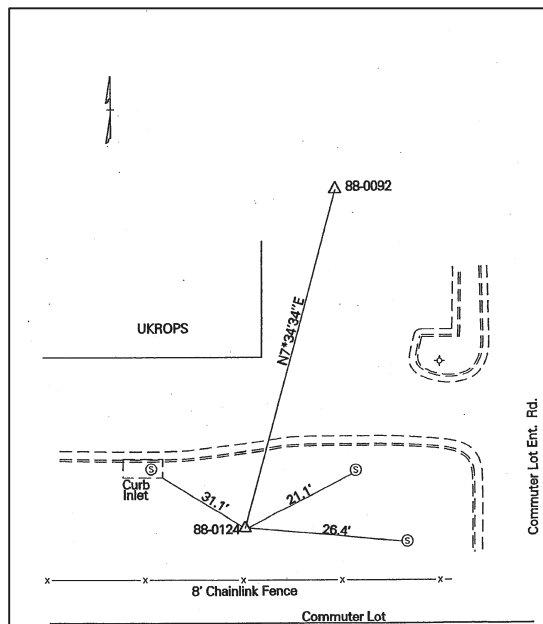
COUNTY		NAME OF STATION		YEAR
SPOTSYLVANIA		88-0124		2000
N: 6788814.69	E: 11760008.73	LAT.: 38°17'11.09900"N	LONG.: 77°32'04.57091"W	
GRID FACTOR: 0.9999649828	COMBINED FACTOR: 0.99997006		ϕ ANGLE: +0°36'09"	
ESTABLISHED BY: VDOT	YEAR 1999	DISTANCES AND DIRECTIONS TO REFERENCE MARKS AND PROMINENT OBJECTS OBSERVED AT STATION		
		OBJECT	DISTANCE-FT.	AZIMUTH
VERTICAL DATUM		88-0092	Unknown	7° 34' 34"
ELEVATION (FT.)				
VERTICAL ORDER: THIRD				

DESCRIPTION OF STATION:

Standard metal VDOT disk stamped 88-0124, set in concrete 0.10' below the ground surface.

To reach this monument from the Interstate 95 overpass proceed west on Route 3 (Plank Road) 1.6 miles. Turn south off Route 3 (Plank Road) on to Salem Church Road Commuter Lot entrance road. Monument is located southeast of the back of the Ukrops Building.

SKETCH OF STATION:



THIS SURVEY DATA PREPARED
 USING 1 meter = 39.37 inches

NOTE:

COORDINATE AND ELEVATION DATA LISTED ABOVE IS
 CONVERTED TO NAD83/93 AND NAVD88 BY USING
 CORPSCON. IN 2008 THE COORDINATES WERE CONVERTED
 TO NAD83(2007) BY APPLYING A COMPUTED SHIFT.

GEOMETRICS
 GPS, INC.

236 CAMBRIDGE STREET
 FREDERICKSBURG, VIRGINIA
 (540) 372-3499

PREPARED BY: KRO	DATE: JAN '01
CHECKED BY: DAR	DATE: JAN '01