

SPOTSYLVANIA COUNTY, VIRGINIA  
 GEODETIC SURVEY CONTROL REVISED 10/2008

MAP PROJECTION: LAMBERT

HORIZONTAL ORDER OF SURVEY: THIRD

NAD 83(2007) \* VIRGINIA STATE PLANE COORDINATE SYSTEM \* NORTH ZONE

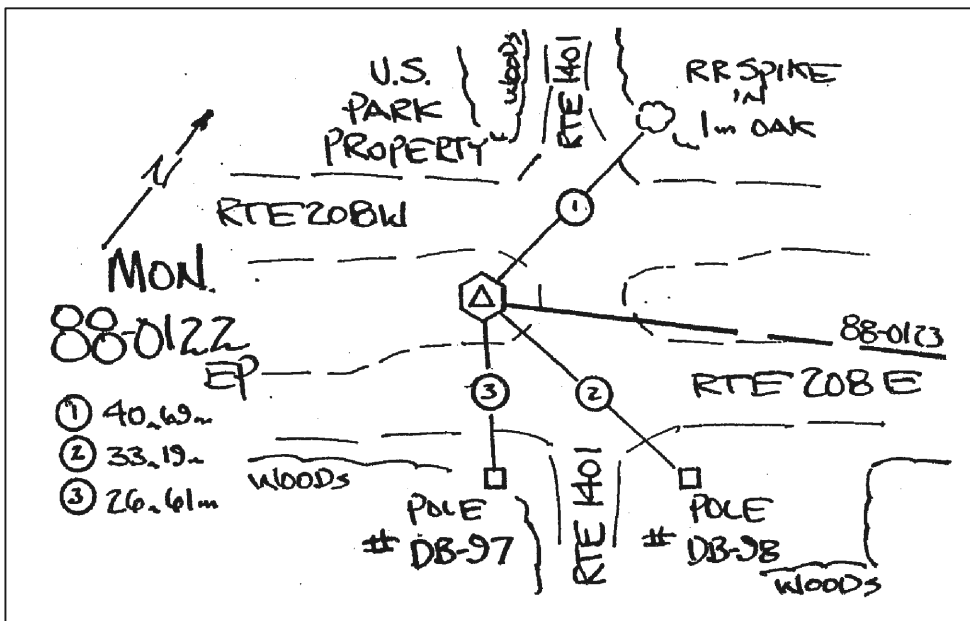
COUNTY		NAME OF STATION		YEAR
SPOTSYLVANIA		88-0122		2000
N: 6761043.14	E: 11748284.95	LAT.: 38°12'37.76539"N	LONG.: 77°34'35.11054"W	
GRID FACTOR: 0.9999734602	COMBINED FACTOR: 0.99996483		ϕ ANGLE: +0°34'35"	
ESTABLISHED BY: VDOT	YEAR 1998	DISTANCES AND DIRECTIONS TO REFERENCE MARKS AND PROMINENT OBJECTS OBSERVED AT STATION		
		OBJECT	DISTANCE-FT.	AZIMUTH
VERTICAL DATUM		88-0123	Unknown	48° 00' 13"
ELEVATION (FT.)				
VERTICAL ORDER: THIRD				

DESCRIPTION OF STATION:

Standard metal VDOT disk stamped 88-0122, set in concrete flush with the ground surface.

To reach this monument from the intersection of Route 613 (Brock Road) and Route 208 (Courthouse Road) at Spotsylvania Courthouse, proceed east on Route 208 (Courthouse Road) 1.6 km. Monument is located in the median at the Route 208 (Courthouse Road) and Route 1401 (Wild Turkey Drive) and Burnside Drive (US Park Service Road).

SKETCH OF STATION:



THIS SURVEY DATA PREPARED  
 USING 1 meter = 39.37 inches

NOTE:

COORDINATE AND ELEVATION DATA LISTED ABOVE IS  
 CONVERTED TO NAD83/93 AND NAVD88 BY USING  
 CORPSCON. IN 2008 THE COORDINATES WERE CONVERTED  
 TO NAD83(2007) BY APPLYING A COMPUTED SHIFT.

**GEOMETRICS**  
 OPS, INC.

236 CAMBRIDGE STREET  
 FREDERICKSBURG, VIRGINIA  
 (540) 372-3499

PREPARED BY: KRO	DATE: JAN '01
CHECKED BY: DAR	DATE: JAN '01