

SPOTSYLVANIA COUNTY, VIRGINIA  
 GEODETIC SURVEY CONTROL REVISED 10/2008

MAP PROJECTION: LAMBERT  
 NAD 83(2007) \* VIRGINIA STATE PLANE COORDINATE SYSTEM \* NORTH ZONE

HORIZONTAL ORDER OF SURVEY: THIRD

|                           |                             |  |                         |              |
|---------------------------|-----------------------------|--|-------------------------|--------------|
| COUNTY                    |                             | NAME OF STATION  |                         | YEAR         |
| SPOTSYLVANIA              |                             | 88-0107  |                         | 2000         |
| N: 6800474.75             | E: 11740108.32              | LAT.: 38°19'08.35313"N   | LONG.: 77°36'12.72743"W |              |
| GRID FACTOR: 0.9999618795 | COMBINED FACTOR: 0.99995261 |  | ϕ ANGLE: +0°33'34"      |              |
| ESTABLISHED BY:<br>VDOT   | YEAR<br>1996                | DISTANCES AND DIRECTIONS TO REFERENCE MARKS<br>AND PROMINENT OBJECTS OBSERVED AT STATION |                         |              |
|                           |                             | OBJECT   | DISTANCE-FT.            | MAG. AZIMUTH |
| VERTICAL DATUM NAVD 88    |                             |  |                         |              |
| ELEVATION (FT.) 300.30    |                             |  |                         |              |
| VERTICAL ORDER: THIRD     |                             |  |                         |              |

DESCRIPTION OF STATION:

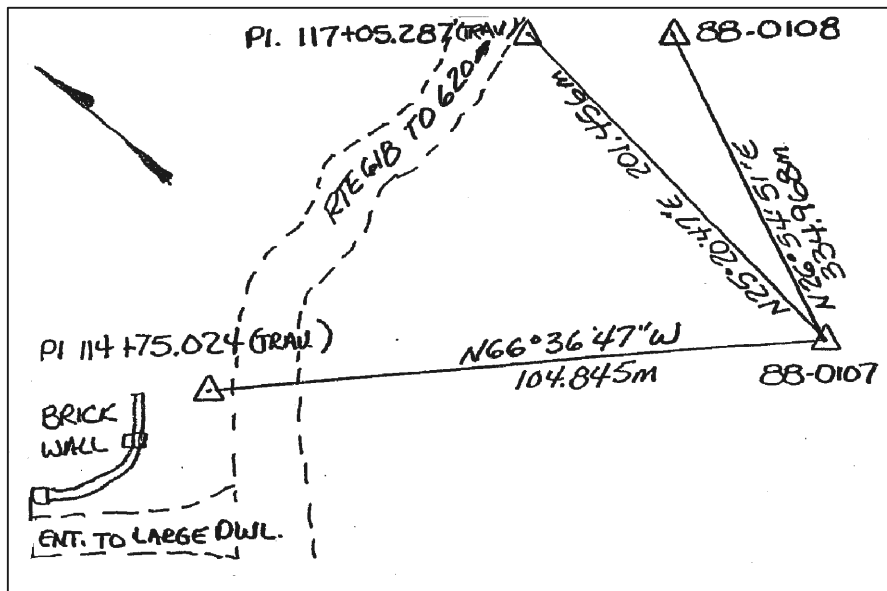
Standard metal VDOT disk stamped 88-0107 set in concrete 1" below the ground surface and marked with a witness post.

To reach this monument from the intersection of Rt. 3 West Bound Lanes (WBL) and Rt. 618 (River Road), proceed 1.9 miles to the north. Monument is 91.675 meters east from the center of the gravel road in an open pasture.

Monument 88-0108 has been destroyed.

Do Not Enter this property without permission from property owner.

SKETCH OF STATION:



THIS SURVEY DATA PREPARED  
 USING 1 meter = 39.37 inches

NOTE:

COORDINATE AND ELEVATION DATA LISTED  
 ABOVE IS CONVERTED TO NAD83/93 AND  
 NAVD88 BY USING CORPSCON. IN 2008 THE  
 COORDINATES WERE CONVERTED TO  
 NAD83(2007) BY APPLYING A COMPUTED SHIFT.

|                  |               |
|------------------|---------------|
| PREPARED BY: KRO | DATE: JAN '01 |
| CHECKED BY: DAR  | DATE: JAN '01 |

**GEOMETRICS**  
 GPS, INC.

236 CAMBRIDGE STREET  
 FREDERICKSBURG, VIRGINIA  
 (540) 372-3499